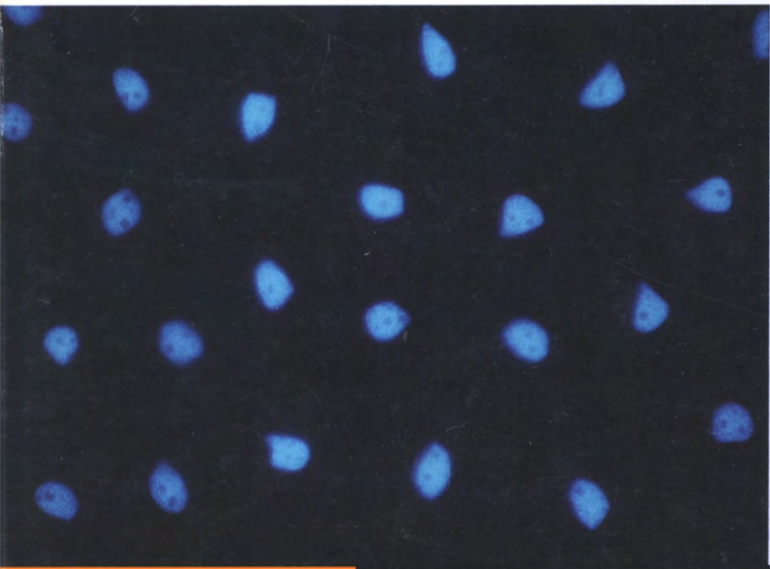
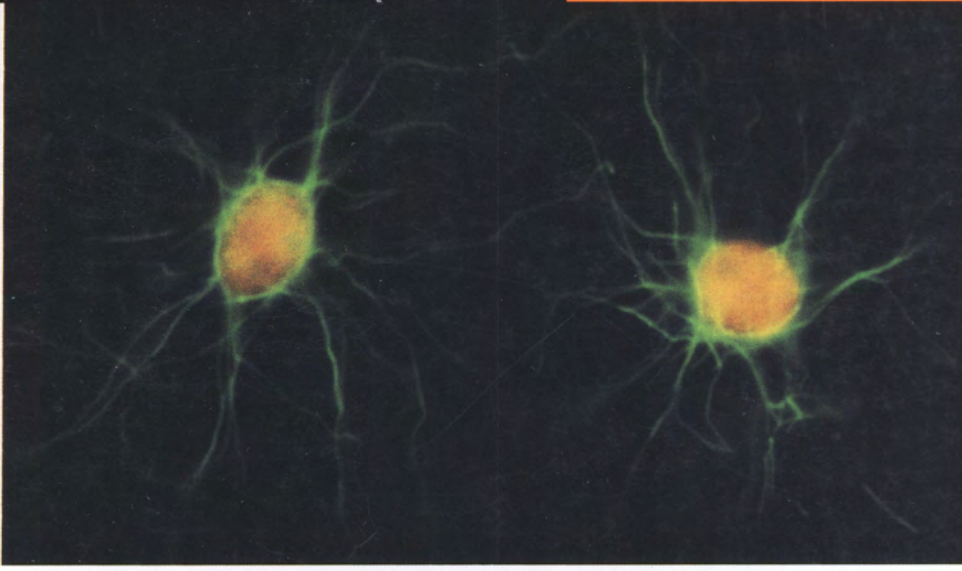
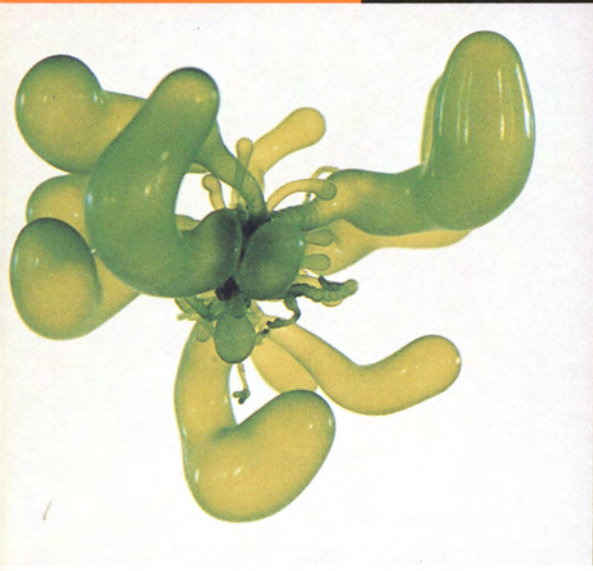


# Phycological Research

Formerly The Japanese Journal of Phycology

Volume 44 • Issue 1 • March 1996

ISSN 1322-0829



*b*

Blackwell  
Science

The Japanese  
Society of  
Phycology



# Phycological Research

## EDITOR-IN-CHIEF

Hiroshi Kawai  
Kobe University Research Center for Inland Seas  
Rokkodai  
Kobe 657, Japan

## ASSOCIATE EDITORS

Eric C. Henry  
Department of Botany and Plant  
Pathology  
Oregon State University, USA

Takeo Horiguchi  
Graduate School of Science  
Hokkaido University  
Japan

Robert J. King  
School of Biological Sciences  
University of New South Wales  
Australia

In Kyu Lee  
Department of Botany  
Seoul National University  
Korea

Sandra C. Lindstrom  
Department of Botany  
University of British Columbia  
Canada

Taizo Motomura  
Institute of Algological Research  
Hokkaido University  
Japan

Makoto M. Watanabe  
National Institute for  
Environmental Studies  
Japan

## EDITORIAL ADVISORY BOARD

Robert A. Andersen *Maine, USA*  
Sung-Min Boo *Daejeon, Korea*  
Shuji Hino *Yamagata, Japan*  
Terumitsu Hori *Tsukuba, Japan*  
Terunobu Ichimura *Muroran, Japan*

Michio Masuda *Sapporo, Japan*  
Shigeki Mayama *Tokyo, Japan*  
Hiroyuki Nakahara *Kyoto, Japan*  
Masao Ohno *Kochi, Japan*  
Ikuko Shihira-Ishikawa *Tokyo, Japan*

Mikio Tsuzuki *Tokyo, Japan*  
Shin Watanabe *Toyama, Japan*  
John A. West *Melbourne, Australia*  
Yasutsugu Yokohama *Shizuoka, Japan*

**AIMS AND SCOPE** *Phycological Research* is published by The Japanese Society of Phycology and complements *The Japanese Journal of Phycology*. The journal publishes international research dealing with all aspects of phycology to facilitate the international exchange of results.

**EDITORIAL CORRESPONDENCE** Papers and other material for publication should be sent to the Editor-in-Chief: Dr Hiroshi Kawai, Kobe University Research Center for Inland Seas, Rokkodai, Kobe 657, Japan (fax: +81 78 803 0488, e-mail: kawai@gradura.scitec.kobe-u.ac.jp). For details concerning the submission of papers to the Journal see the Notice to Contributors at the back of the Journal.

**BUSINESS CORRESPONDENCE** All matters relating to orders and subscriptions, back numbers and offprints should be sent to Blackwell Science Pty Ltd, at 54 University Street, Carlton, Victoria 3053, Australia (telephone +613 9347 0300, facsimile +613 9347 5001).

**SUBSCRIPTION RATES** The Journal is published quarterly and the subscription prices for 1996 are US\$210.00/¥18,000.00. The Journal is dispatched to subscribers by surface air-lifted post.

**ADVERTISEMENT BOOKINGS** Enquiries should be sent to the Advertisement Manager, Blackwell Science Pty Ltd, 54 University Street, Carlton, Victoria 3053, Australia (telephone +613 9347 0300, facsimile +613 9347 5001). Although all accepted advertising material is expected to conform to ethical standards, such acceptance is not implied by the Journal.

**THE JAPANESE SOCIETY OF PHYCOLOGY** We invite anyone who is interested in any aspect of phycology to become a member of The Japanese Society of Phycology. As a member, you will receive *Phycological Research* free of charge. The annual membership fee for individuals is ¥7,000. Members who reside outside Japan will receive the English journal *Phycological Research* only and the annual membership fee is reduced to ¥6,000. Those who

wish to join the Society should send the application form (at back of the Journal) together with payment to the Membership Secretary: Dr Taiju Kitayama, Division of Cryptogams, National Science Museum, Hyakunincho 3-23-1, Shinjuku, Tokyo 169, Japan (fax: +81 33 364 7104).

Members who wish to claim for missing or damaged issues of the journal should contact the Membership Secretary.

**ABSTRACTING AND INDEXING SERVICES** This journal is indexed by *Biosis*, *Cambridge Scientific Abstracts* (*Ecological Sciences and Fisheries Abstract*), *Chemical Abstracts Service*, *Current Awareness in Biological Sciences*, and *University Microfilms*.

**COPYRIGHT AND PHOTOCOPYING** © 1996 Blackwell Science Pty Ltd. Authorization to photocopy items for internal or personal use, or the internal or personal use of specific clients, is granted by Blackwell Science Pty Ltd for libraries and other users registered with the Copyright Clearance Center (CCC) Transactional Reporting Service, provided that the base fee of \$11.50 per copy is paid directly to CCC, 222 Rosewood Drive, Danvers, MA 01923, USA. This consent does not extend to other kinds of copying, such as copying for general distribution for advertising or promotional purposes, for creating new collective works or for resale. Special requests should be addressed to the Publisher. 1322-0829/96 \$11.50

Publication of *Phycological Research* has been supported in part by a Grant-in-Aid for Publication of Scientific Result from the Ministry of Education, Science and Culture, Japan.

**Cover** Immunofluorescence micrographs of *Boergesenia forbesii* (Top left). Top right: Nuclei (orange) and perinuclear microtubules (green). Bottom left: Nuclei (blue). Bottom right: Nuclei which incorporated BrdU (using anti-BrdU antibody, red). Same field as for bottom left. (See pp. 11–17 for details).



# The Japanese Society of Phycology

Officers for 1996–1997

President: Tadao Yoshida, Division of Biological Sciences,  
Graduate School of Science, Hokkaido University,  
Sapporo 060, Japan

Secretary: Takeo Horiguchi, Division of Biological  
Sciences, Graduate School of Science, Hokkaido  
University, Sapporo 060, Japan

Membership Secretary: Taiju Kitayama, Department of  
Botany, National Science Museum, Tokyo, 4-1-1  
Amakubo, Tsukuba, Ibaraki, 305 Japan

Treasurer: Kazuhiro Kogame, Division of Biological  
Sciences, Graduate School of Science, Hokkaido  
University, Sapporo 060, Japan

Editor, *Phycological Research*: Hiroshi Kawai, Kobe  
University Research Center for Inland Seas, Rokkodai,  
Kobe 657, Japan

Editor, *The Japanese Journal of Phycology* 'Sorui': Isao  
Inouye, Institute of Biological Sciences, University of  
Tsukuba, Tsukuba 305, Japan

Members of Executive Council 1996–1997

Yuji Fujita *Nagasaki University*

Yoshiaki Hara *University of Tsukuba*

Hiroshi Kawai *Kobe University*

Shigeru Kumano

Michio Masuda *Hokkaido University*

Taketo Nakano *Hiroshima University*

Hisayoshi Nozaki *National Institute for Environmental Stud-  
ies*

Megumi Okazaki *Tokyo Gakugei University*

Kazuo Okuda *Kochi University*

Takeo Okuda

Yoshiaki Sanbonsuga *Tohoku National Fisheries Research  
Institute*

Jiro Tanaka *Tokyo University of Fisheries*

Makoto M. Watanabe *National Institute for Environmental  
Studies*

Shin Watanabe *Toyama University*

Hirotohi Yamamoto *Hokkaido University*

Yasutsugu Yokohama *University of Tsukuba*

## JOIN THE JAPANESE SOCIETY OF PHYCOLOGY AND RECEIVE FOUR ISSUES OF *PHYCOLOGICAL RESEARCH* PER YEAR FREE OF CHARGE

The Japanese Society of Phycology, founded in 1952, currently has 760 members (including 105 overseas members). The Society is open to anyone who is interested in pure or applied aspects of phycology.

### Application for membership

(Please type or write in block letters)

Membership starts from 1995

Name in full: \_\_\_\_\_, \_\_\_\_\_  
(Family name) (Given name and initials)

Mailing address: \_\_\_\_\_  
\_\_\_\_\_  
(Postal code) (Country)

Telephone: \_\_\_\_\_ Fax: \_\_\_\_\_

E-mail: \_\_\_\_\_ Interests: \_\_\_\_\_

Signature: \_\_\_\_\_ Date: \_\_\_\_\_

**The annual fee for individual members is ¥7,000  
(¥6,000 for members who reside outside Japan)**

Payment by:  Visa  MasterCard  American Express

Card number: \_\_\_\_\_ Expiry date: \_\_\_\_\_

Signature: \_\_\_\_\_

International giro postal transfer (Postal account No.: 00180-5-68429)

International postal money order

Send application form to:

Dr Taiju Kitayama  
Department of Botany, National Science Museum,  
Tokyo, 4-1-1 Amakubo, Tsukuba, Ibaraki, 305 Japan  
Fax: +81 298 53 8401

# Phycological Research

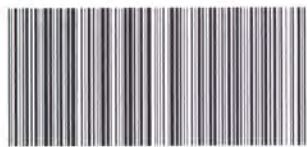
Formerly The Japanese Journal of Phycology

Volume 44 • Issue 1 • March 1996

- Robert G. Sheath, Kirsten M. Müller, Alan Whittick and Timothy J. Entwisle  
A re-examination of the morphology and reproduction of *Nothocladus lindaueri* (Batrachospermales, Rhodophyta) 1
- Taizo Motomura  
Cell cycle analysis in a multinucleate green alga, *Boergesenia forbesii* (Siphonocladales, Chlorophyta) 11
- W. A. Nelson and G. A. Knight  
Life history in culture of the obligate epiphyte *Porphyra subtumens* (Bangiales, Rhodophyta) endemic to New Zealand 19
- Kazuyuki Miyaji  
Taxonomic study of the genus *Spongomorpha* (Acrosiphoniales, Chlorophyta) in Japan. I. *Spongomorpha spiralis* 27
- Ken-ichiro Ishida, Takeshi Nakayama and Yoshiaki Hara  
Taxonomic studies on the Chlorarachniophyta. II. Generic delimitation of the chlorarachniophytes and description of *Gymnochlora stellata* gen. et sp. nov. and *Lotharella* gen. nov. 37
- Takeshi Nakayama, Shin Watanabe, Kaoru Mitsui, Hidenobu Uchida and Isao Inouye  
The phylogenetic relationship between the Chlamydomonadales and Chlorococcales inferred from 18SrDNA sequence data 47
- Catherine A. Russell, Michael D. Guiry, A. Rosa McDonald and David J. Garbary  
Actin-mediated chloroplast movement in *Griffithsia pacifica* (Ceramiales, Rhodophyta) 57
- Hiroshi Tamura, Ichiro Mine and Kazuo Okuda  
Cellulose-synthesizing terminal complexes and microfibril structure in the brown alga *Sphacelaria rigidula* (Sphacelariales, Phaeophyceae) 63

**b**

Blackwell  
Science



1322-0829(199603)44:1;1-2