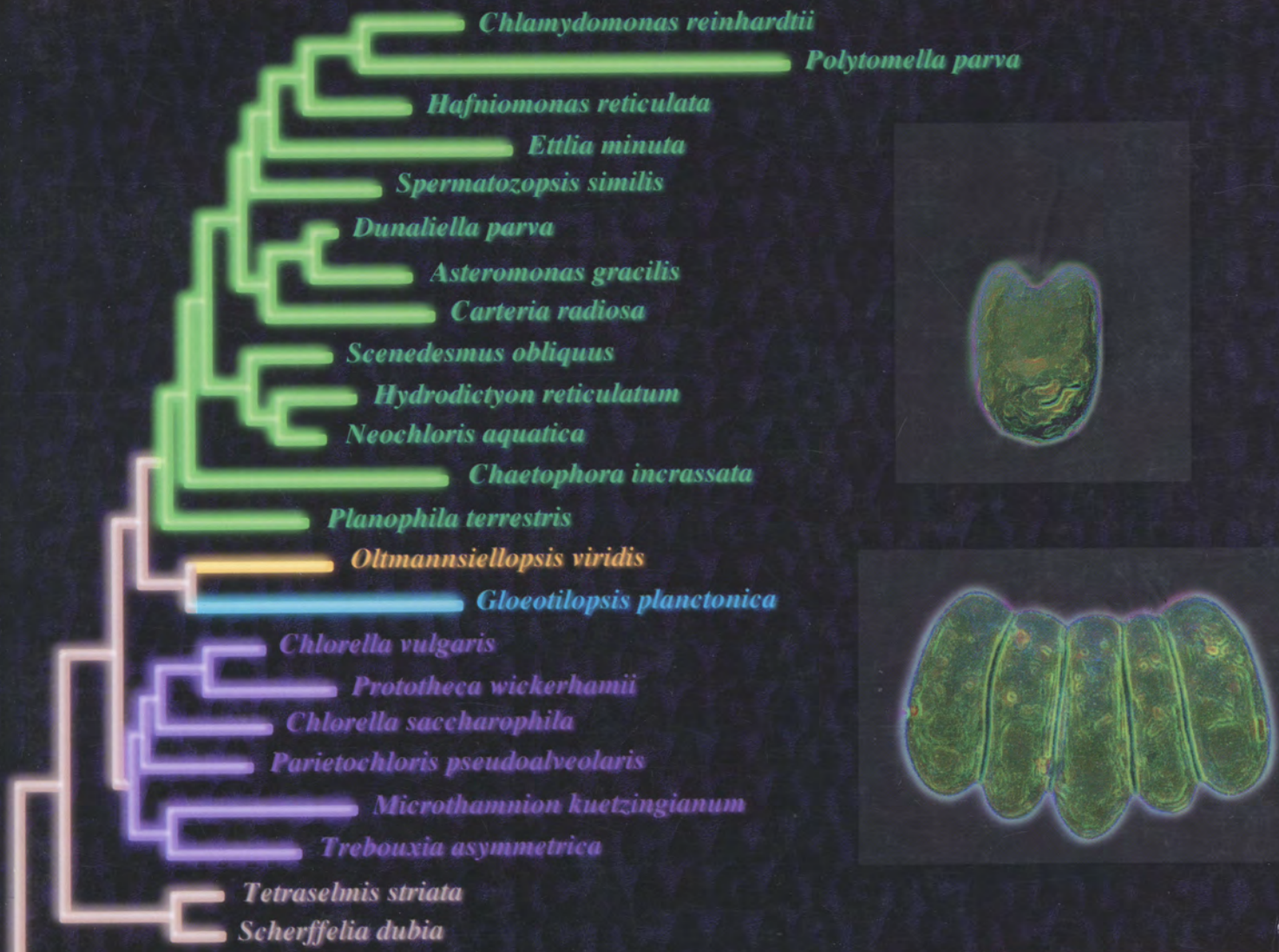


Phycological Research

Formerly The Japanese Journal of Phycology

Volume 44 • Issue 3 • September 1996

ISSN 1322-0829



b

Blackwell
Science

The Japanese
Society of
Phycology

Phycological Research

EDITOR-IN-CHIEF

Hiroshi Kawai
Kobe University Research Center for Inland Seas
Rokkodai
Kobe 657, Japan

ASSOCIATE EDITORS

Eric C. Henry
Department of Botany and Plant
Pathology
Oregon State University, USA

Takeo Horiguchi
Graduate School of Science
Hokkaido University
Japan

Robert J. King
School of Biological Sciences
University of New South Wales
Australia

In Kyu Lee
Department of Botany
Seoul National University
Korea

Sandra C. Lindstrom
Department of Botany
University of British Columbia
Canada

Taizo Motomura
Institute of Algological Research
Hokkaido University
Japan

Makoto M. Watanabe
National Institute for
Environmental Studies
Japan

EDITORIAL ADVISORY BOARD

Robert A. Andersen *Maine, USA*
Sung-Min Boo *Daejeon, Korea*
Shuji Hino *Yamagata, Japan*
Terumitsu Hori *Tsukuba, Japan*
Terunobu Ichimura *Muroran, Japan*

Michio Masuda *Sapporo, Japan*
Shigeki Mayama *Tokyo, Japan*
Hiroyuki Nakahara *Kyoto, Japan*
Masao Ohno *Kochi, Japan*
Ikuko Shihira-Ishikawa *Tokyo, Japan*

Mikio Tsuzuki *Tokyo, Japan*
Shin Watanabe *Toyama, Japan*
John A. West *Melbourne, Australia*
Yasutsugu Yokohama *Shizuoka, Japan*

AIMS AND SCOPE *Phycological Research* is published by The Japanese Society of Phycology and complements *The Japanese Journal of Phycology*. The Journal publishes international research dealing with all aspects of phycology to facilitate the international exchange of results.

EDITORIAL CORRESPONDENCE Papers and other material for publication should be sent to the Editor-in-Chief: Dr Hiroshi Kawai, Kobe University Research Center for Inland Seas, Rokkodai, Kobe 657, Japan (fax: +81 78 803 0488; email: kawai@icluna.kobe-u.ac.jp). For details concerning the submission of papers to the Journal see the Notice to Contributors at the back of the Journal.

BUSINESS CORRESPONDENCE All matters relating to orders and subscriptions, back numbers and offprints should be sent to Blackwell Science Pty Ltd, 54 University Street, Carlton, Victoria 3053, Australia (tel: +61 3 9347 0300; fax: +61 3 9347 5001; email: 100036.2660@compuserve.com, http://www.blacksci.co.uk). Blackwell Science provides a free dial (Japanese language) service from Japan (tel: 00 31 61 6238).

SUBSCRIPTION RATES The Journal is published quarterly and the subscription prices for 1996 are US\$210.00/¥18,000.00. The Journal is dispatched to subscribers by surface air-lifted post.

ADVERTISEMENT BOOKINGS Enquiries should be sent to the Advertisement Manager, Blackwell Science Pty Ltd, 54 University Street, Carlton, Victoria 3053, Australia (tel: +61 3 9347 0300; fax: +61 3 9347 5001). Although all accepted advertising material is expected to conform to ethical standards, such acceptance is not implied by the Journal.

THE JAPANESE SOCIETY OF PHYCOLOGY We invite anyone who is interested in any aspect of phycology to become a member of The Japanese Society of Phycology. As a member, you will receive *Phycological Research* free of charge. The annual membership fee for individuals is

¥7,000. Members who reside outside Japan will receive the English journal *Phycological Research* only and the annual membership fee is reduced to ¥6,000. Those who wish to join the Society should send the application form (at back of the Journal) together with payment to the Membership Secretary: Dr Taiju Kitayama, Department of Botany, National Science Museum, Tokyo, 4-1-1 Amakubo, Tsukuba, Ibaraki 305, Japan (fax: +81 298 53 8401).

Members who wish to claim for missing or damaged issues of the Journal should contact the Membership Secretary.

ABSTRACTING AND INDEXING SERVICES This journal is indexed by *Biosis*, *Cambridge Scientific Abstracts* (*Ecological Sciences and Fisheries Abstracts*), *Chemical Abstracts*, *Current Awareness in Biological Sciences* and *University Microfilms*.

COPYRIGHT AND PHOTOCOPYING © 1996 Blackwell Science Pty Ltd. Authorization to photocopy items for internal or personal use, or the internal or personal use of specific clients, is granted by Blackwell Science Pty Ltd for libraries and other users registered with the Copyright Clearance Center (CCC) Transactional Reporting Service, provided that the base fee of \$11.50 per copy is paid directly to CCC, 222 Rosewood Drive, Danvers, MA 01923, USA. This consent does not extend to other kinds of copying, such as copying for general distribution for advertising or promotional purposes, for creating new collective works or for resale. Special requests should be addressed to the Publisher. 1322-0829/96 \$11.50

Publication of *Phycological Research* has been supported in part by a Grant-in-Aid for Publication of Scientific Result from the Ministry of Education, Science and Culture, Japan.

Cover Phylogenetic tree of the Chlorophyta inferred from 18SrdDNA sequence data (left). Retouched micrographs (right) of *Hafniomonas reticulata* (top) and *Oltmannsiellopsis viridis* (bottom). (See pp. 151–161 for details.)

The Japanese Society of Phycology

Officers for 1996–1997

President: Tadao Yoshida, Division of Biological Sciences,
Graduate School of Science, Hokkaido University,
Sapporo 060, Japan

Secretary: Takeo Horiguchi, Division of Biological
Sciences, Graduate School of Science, Hokkaido
University, Sapporo 060, Japan

Membership Secretary: Taiju Kitayama, Department of
Botany, National Science Museum, Tokyo, 4-1-1
Amakubo, Tsukuba, Ibaraki, 305 Japan

Treasurer: Kazuhiro Kogame, Division of Biological
Sciences, Graduate School of Science, Hokkaido
University, Sapporo 060, Japan

Editor, *Phycological Research*: Hiroshi Kawai, Kobe
University Research Center for Inland Seas, Rokkodai,
Kobe 657, Japan

Editor, *The Japanese Journal of Phycology* 'Sorui': Isao
Inouye, Institute of Biological Sciences, University of
Tsukuba, Tsukuba 305, Japan

Members of Executive Council 1996–1997

Yuji Fujita *Nagasaki University*

Yoshiaki Hara *University of Tsukuba*

Hiroshi Kawai *Kobe University*

Shigeru Kumano

Michio Masuda *Hokkaido University*

Takeo Nakano *Hiroshima University*

Hisayoshi Nozaki *National Institute for Environmental Stud-*
ies

Megumi Okazaki *Tokyo Gakugei University*

Kazuo Okuda *Kochi University*

Takeo Okuda

Yoshiaki Sanbonsuga *Tohoku National Fisheries Research*
Institute

Jiro Tanaka *Tokyo University of Fisheries*

Makoto M. Watanabe *National Institute for Environmental*
Studies

Shin Watanabe *Toyama University*

Hirotooshi Yamamoto *Hokkaido University*

Yasutsugu Yokohama *University of Tsukuba*

JOIN THE JAPANESE SOCIETY OF PHYCOLOGY AND RECEIVE FOUR ISSUES OF *PHYCOLOGICAL RESEARCH* PER YEAR FREE OF CHARGE

The Japanese Society of Phycology, founded in 1952, currently has 760 members (including 105 overseas members). The Society is open to anyone who is interested in pure or applied aspects of phycology.

Application for membership

(Please type or write in block letters)

Membership starts from 1996

Name in full: _____
(Family name) (Given name and initials)

Mailing address: _____

(Postal code) (Country)

Telephone: _____ Fax: _____

E-mail: _____ Interests: _____

Signature: _____ Date: _____

**The annual fee for individual members is ¥7,000
(¥6,000 for members who reside outside Japan)**

Payment by: Visa MasterCard American Express

Card number: _____ Expiry date: _____

Signature: _____

International giro postal transfer (Postal account No.: 00180-5-68429)

International postal money order

Send application form to:

Dr Taiju Kitayama
Department of Botany, National Science Museum,
Tokyo, 4-1-1 Amakubo, Tsukuba, Ibaraki, 305 Japan
Fax: +81 298 53 8401

Phycological Research

Formerly The Japanese Journal of Phycology

Volume 44 • Issue 3 • September 1996

- Takuji Uchida, Yukihiko Matsuyama, Mineo Yamaguchi and Tsuneo Honjo
The life cycle of Gyrodinium instriatum (Dinophyceae) in culture 119
- Tadao Yoshida and Hideo Mikami
Research Note: Sorellocolax stellaris gen. et sp. nov., a hemiparasitic alga (Delesseriaceae, Rhodophyta) from the east coast of Honshu, Japan 125
- Gerald T. Kraft and Michael J. Wynne
Delineation of the Genera Struvea Sonder and Phyllodictyon J. E. Gray (Cladophorales, Chlorophyta) 129
- Takeo Horiguchi
Haramonas dimorpha gen. et sp. nov. (Raphidophyceae), a new marine raphidophyte from Australian mangrove 143
- Takeshi Nakayama, Shin Watanabe and Isao Inouye
Phylogeny of wall-less green flagellates inferred from 18SrRNA sequence data 151
- Takeshi Nishino, Shinjiro Asakawa and Shigeru Ogawa
Research Note: Fine filaments observed within the cytoplasm surrounding the leading edge of the septum in telophase cells of Spirogyra (Zygnematales, Chlorophyta) 163
- Masafumi Iima and Kenji Fukusumi
Research Note: First report of Chloropelta caespitosa (Ulvaceae, Ulvales, Ulvophyceae) in Japan 167

b

Blackwell
Science



1322-0829(199609)44:3;1-J