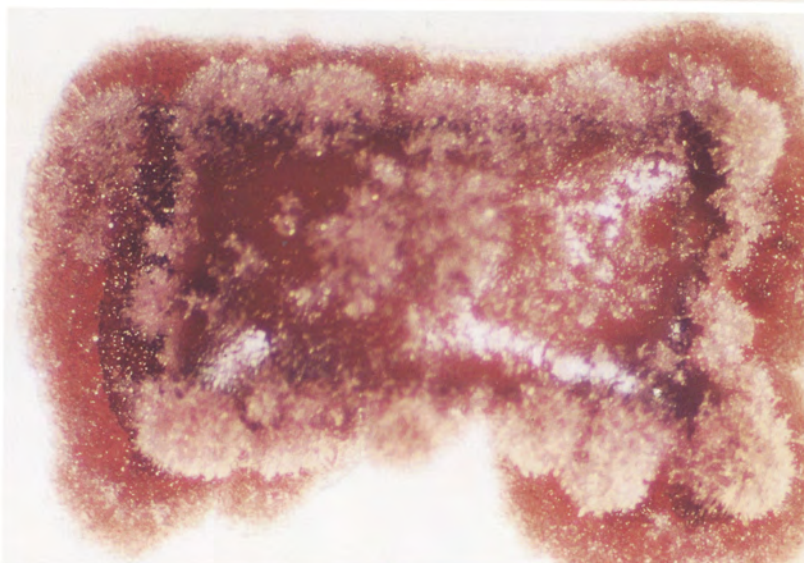
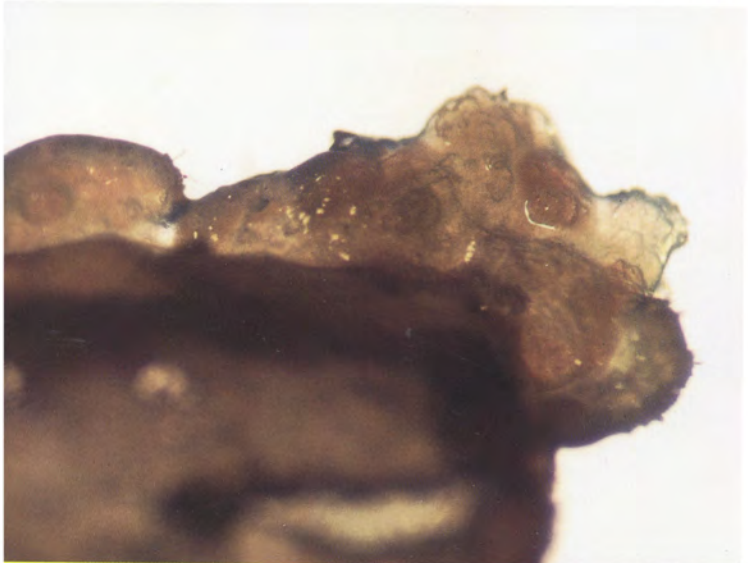
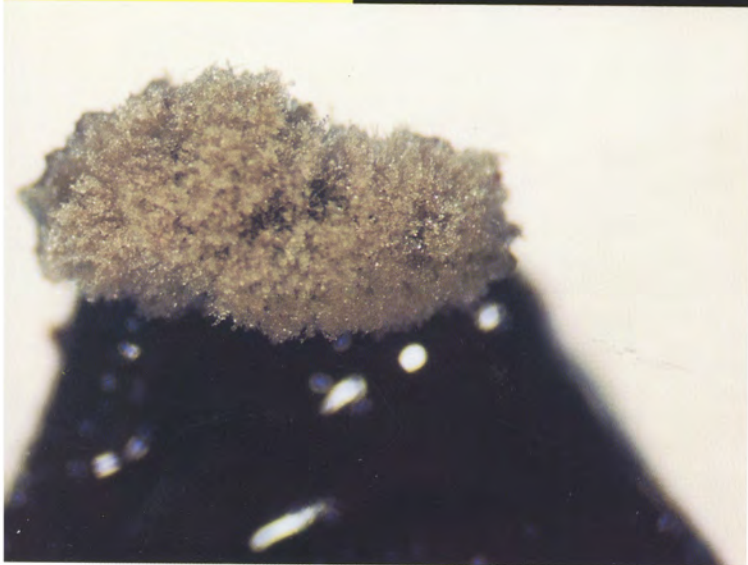


# Phycological Research

Formerly The Japanese Journal of Phycology

Volume 45 • Issue 2 • June 1997

ISSN 1322-0829



*b*

Blackwell  
Science

The Japanese  
Society of  
Phycology



# Phycological Research

## EDITOR-IN-CHIEF

Hiroshi Kawai

Kobe University Research Center for Inland Seas, Rokkodai, Kobe 657, Japan

## ASSOCIATE EDITORS

Sung Min Boo

Department of Biology  
Chungnam National  
University  
Korea

Eric C. Henry

Department of Botany  
and Plant Pathology  
Oregon State University  
USA

Shuji Hino

Faculty of Science  
Yamagata University  
Japan

Robert J. King

School of Biological  
Sciences  
University of New South  
Wales, Australia

In Kyu Lee

Department of Botany  
Seoul National  
University  
Korea

Sandra C. Lindstrom

Department of Botany  
University of British  
Columbia, Canada

Taizo Motomura

Institute of Algological  
Research, Hokkaido  
University, Japan

Kazuo Okuda

Faculty of Science  
Kochi University  
Japan

Yoshihiro Shiraiwa

Faculty of Science  
Niigata University  
Japan

Shin Watanabe

Faculty of Education  
Toyama University  
Japan

## EDITORIAL ADVISORY BOARD

Robert A. Andersen *Maine, USA*

Yuji Fujita *Nagasaki, Japan*

Terumitsu Hori *Tsukuba, Japan*

Ichiro Imai *Kyoto, Japan*

Hironao Kataoka *Sendai, Japan*

Masao Ohno *Kochi, Japan*

Megumi Okazaki *Tokyo, Japan*

Noriko Takamura *Tsukuba, Japan*

Makoto M. Watanabe *Tsukuba, Japan*

John A. West *Melbourne, Australia*

Yasutsugu Yokohama *Shimoda, Japan*

## EDITORIAL SECRETARY

Mitsunobu Kamiya *Kobe University Research Center  
for Inland Seas*

## PRODUCTION EDITOR

Mandy Naylor *Blackwell Science Asia*

**AIMS AND SCOPE** *Phycological Research* is published by The Japanese Society of Phycology and complements *The Japanese Journal of Phycology*. The Journal publishes international research dealing with all aspects of phycology to facilitate the international exchange of results.

**EDITORIAL CORRESPONDENCE** Papers and other material for publication should be sent to the Editor-in-Chief: Dr Hiroshi Kawai, Kobe University Research Center for Inland Seas, Rokkodai, Kobe 657, Japan (fax: +81 78 803 0488; email: kawai@kobe-u.ac.jp). For details concerning the submission of papers to the Journal see the Notice to Contributors at the back of the Journal.

**BUSINESS CORRESPONDENCE AND ADVERTISEMENT BOOKINGS** All matters relating to orders and subscriptions, back numbers and offprints, and advertisement bookings should be sent to Blackwell Science Asia, 54 University Street, Carlton, Victoria 3053, Australia (tel: +61 3 9347 0300; fax: +61 3 9347 5001; email: 100036.2660@compuserve.com, <http://www.blackwell-science.com/australi/>). Blackwell Science Asia provides a free dial (Japanese language) service from Japan (tel: 00 31 61 6238).

**SUBSCRIPTION RATES** The Journal is published quarterly and the subscription prices for 1997 are US\$256.00/¥27 300.00. The Journal is dispatched to subscribers by surface air-lifted post.

**THE JAPANESE SOCIETY OF PHYCOLOGY** We invite anyone who is interested in any aspect of phycology to become a member of The Japanese Society of Phycology. As a member, you will receive *Phycological Research* free of charge. The annual membership fee for individuals is ¥7000. Members who reside outside Japan will receive the English journal *Phycological Research* only and the annual membership fee is reduced to ¥6000. Those who wish to join the Society should send the application form (at back of the Journal) together with payment to the Membership

Secretary: Dr Shuji Ohtani, Department of Biology, Faculty of Education, Shimane University, Nishi Kawatsu, Matsue 690, Japan (fax: +81 852 32 6259; email: ohtanish@botan.shimane-u.ac.jp).

Members who wish to claim for missing or damaged issues of the Journal should contact the Membership Secretary.

**ABSTRACTING AND INDEXING SERVICES** This journal is indexed by *Biosis*, *Cambridge Scientific Abstracts* (*Ecological Sciences and Fisheries Abstracts*), *Chemical Abstracts Service*, *Current Awareness in Biological Sciences*, *Geo Abstracts*, and *University Microfilms, Zoological Record*.

**COPYRIGHT AND PHOTOCOPYING** © 1997 Blackwell Science Pty Ltd. Authorization to photocopy items for internal or personal use, or the internal or personal use of specific clients, is granted by Blackwell Science Pty Ltd for libraries and other users registered with the Copyright Clearance Center (CCC) Transactional Reporting Service, provided that the base fee of \$11.50 per copy is paid directly to CCC, 222 Rosewood Drive, Danvers, MA 01923, USA. This consent does not extend to other kinds of copying, such as copying for general distribution for advertising or promotional purposes, for creating new collective works or for resale. Special requests should be addressed to the Publisher. 1322-0829/96 \$11.50

Publication of *Phycological Research* has been supported in part by a Grant-in-Aid for Publication of Scientific Result from the Ministry of Education, Science and Culture, Japan.

**Cover** Callus induction from the explant of red algae. Top left: *Carpopeltis affinis* (Harvey) Okamura. Top right: *Carpopeltis prolifera* (Hariot) Kawaguchi et Masuda. Bottom left: *Grateloupia turuturu* Yamada. Bottom right: *Meristotheca papulosa* (Montagne) J. Agardh. (See pp. 105–111 for details.)



# The Japanese Society of Phycology

Officers for 1997–1998

President: Ikuko Shihira-Ishikawa, Department of Biology,  
Tokyo Gakugei University, Koganei-shi, Tokyo 184,  
Japan

Secretary: Shigeki Mayama, Department of Biology, Tokyo  
Gakugei University, Koganei-shi, Tokyo 184, Japan

Secretary (public relations): Masahiko Idei, Bunkyo  
University Women's College, 1100, Namegaya,  
Chigasaki, Kanagawa 253, Japan

Membership secretary: Shuji Ohtani, Department of  
Biology, Faculty of Education, Shimane University, Nishi  
Kawatsu, Matsue 690, Japan

Treasurer: Jiro Tanaka, Phycology Laboratory, Tokyo  
University of Fisheries, Konan 4-5-7, Minato-ku, Tokyo  
108, Japan

Editor, *Phycological Research*: Hiroshi Kawai, Kobe  
University Research Center for Inland Seas, Rokkodai,  
Kobe 657, Japan

Editor, *The Japanese Journal of Phycology*: Takeo  
Horiguchi, Division of Biological Sciences, Graduate  
School of Science, Hokkaido University, Sapporo 060,  
Japan

Members of Executive Council 1997–1998

Yusho Aruga *Tokyo University of Fisheries*  
Sachito Enomoto *Kobe University*  
Yoshihiko Fujita *Fukui Prefectural University*  
Yuji Fujita *Nagasaki University*  
Terunobu Ichimura *Hokkaido University*  
Isao Inouye *Tsukuba University*  
Shigeo Kawaguchi *Kyushu University*  
Hiroshi Kawai *Kobe University*  
Miyuki Maegawa *Mie University*  
Michio Masuda *Hokkaido University*

Takeo Nakano *Hiroshima University*  
Hisayoshi Nozaki *University of Tokyo*  
Kazuo Okuda *Kochi University*  
Yoshihiro Shiraiwa *Niigata University*  
Jun-Ichi Tsukidate *Tohoku National Fisheries Research In-*  
*stitute*  
Makoto M. Watanabe *National Institute for Environmental*  
*Studies*  
Makoto Yoshizaki *Toho University*

## JOIN THE JAPANESE SOCIETY OF PHYCOLOGY AND RECEIVE FOUR ISSUES OF *PHYCOLOGICAL RESEARCH* PER YEAR FREE OF CHARGE

The Japanese Society of Phycology, founded in 1952, currently has 760 members (including 105 overseas members). The Society is open to anyone who is interested in pure or applied aspects of phycology.

### Application for membership

(Please type or write in block letters)

Membership starts from 1997

Name in full: \_\_\_\_\_, \_\_\_\_\_  
(Family name) (Given name and initials)

Mailing address: \_\_\_\_\_  
\_\_\_\_\_  
(Postal code) (Country)

Telephone: \_\_\_\_\_ Fax: \_\_\_\_\_

E-mail: \_\_\_\_\_ Interests: \_\_\_\_\_

Signature: \_\_\_\_\_ Date: \_\_\_\_\_

**The annual fee for individual members is ¥7,000  
(¥6,000 for members who reside outside Japan)**

Payment by:  Visa  MasterCard  American Express

Card number: \_\_\_\_\_-\_\_\_\_\_-\_\_\_\_\_-\_\_\_\_\_ Expiry date: \_\_\_\_\_

Signature: \_\_\_\_\_

- International giro postal transfer (Postal account No.: 00180-5-68429)  
 International postal money order

Send application form to:

Dr Shuji Ohtani  
Department of Biology  
Faculty of Education, Shimane University,  
Nishi Kawatsu, Matsue 690, Japan  
Fax: +81 852 32 6259; email: ohtanish@botan.shimane-u.ac.jp

# Phycological Research

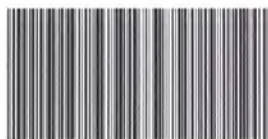
Formerly The Japanese Journal of Phycology

Volume 45 • Issue 2 • June 1997

Michio Masuda, Taiji Itoh, Yoshihide Matsuo and Minoru Suzuki <i>Sesquiterpenoids of Laurencia majuscula (Ceramiales, Rhodophyta) from the Ryukyu Islands, Japan</i>	59
Takeo Horiguchi and Fumiyasu Kubo <i>Roscoffia minor sp. nov. (Peridinales, Dinophyceae): A new, sand-dwelling, armored dinoflagellate from Hokkaido, Japan</i>	65
Terunobu Ichimura <i>Hidden deleterious genetic factors affecting post-meiotic viability in zygospore progeny of a unicellular haplontic alga, mating group A of the Closterium ehrenbergii species complex (Chlorophyta)</i>	71
Koji Iwamoto and Tomoyoshi Ikawa <i>Glycolate metabolism and subcellular distribution of glycolate oxidase in Spatoglossum pacificum (Phaeophyceae, Chromophyta)</i>	77
Markus Kapp, Rolf Knippers and Dieter G. Müller <i>New members of a group of DNA viruses infecting brown algae</i>	85
Bettina Bischoff-Bäsmann, Inka Bartsch, Bangmei Xia and Christian Wiencke <i>Temperature responses of macroalgae from the tropical island Hainan (P.R. China)</i>	91
Wei Huang and Yuji Fujita <i>Callus induction and thallus regeneration in some species of red algae</i>	105
Hisao Ogawa and Minoru Fujita <i>The effect of fertilizer application on farming of the seaweed Undaria pinnatifida (Laminariales, Phaeophyta)</i>	113

**b**

Blackwell  
Science



1322-0829(199706)45:2;1-P