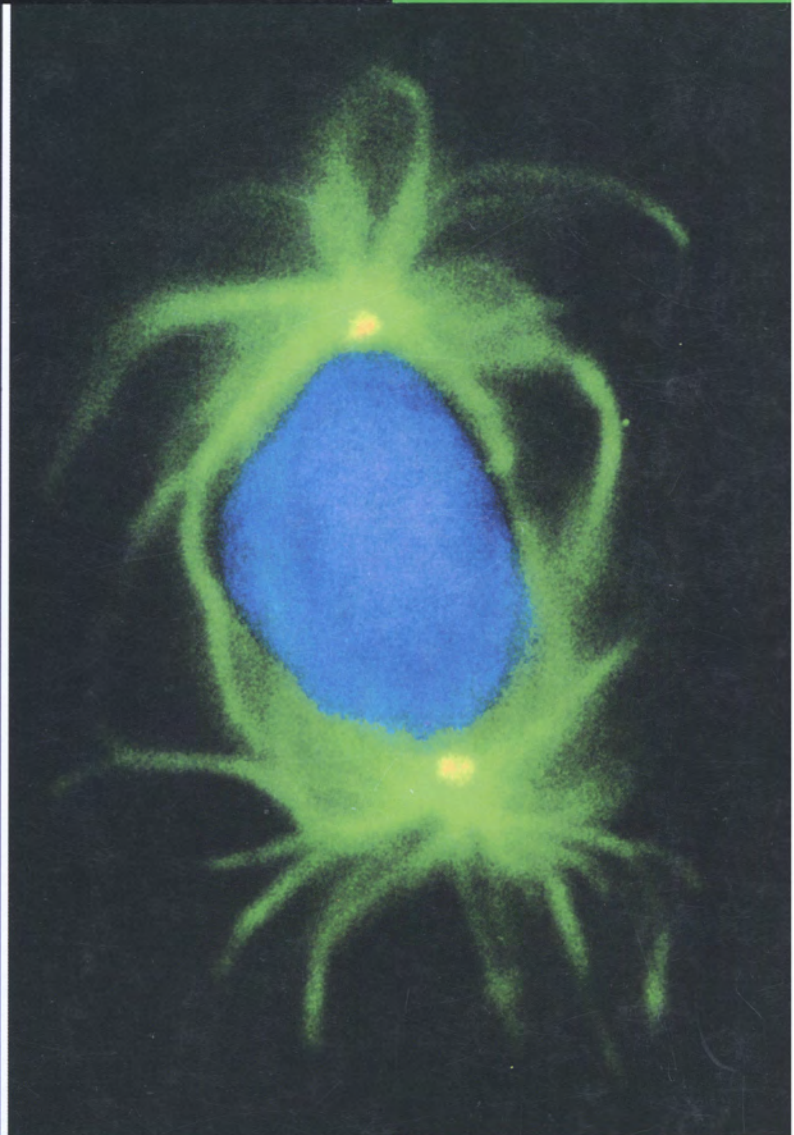
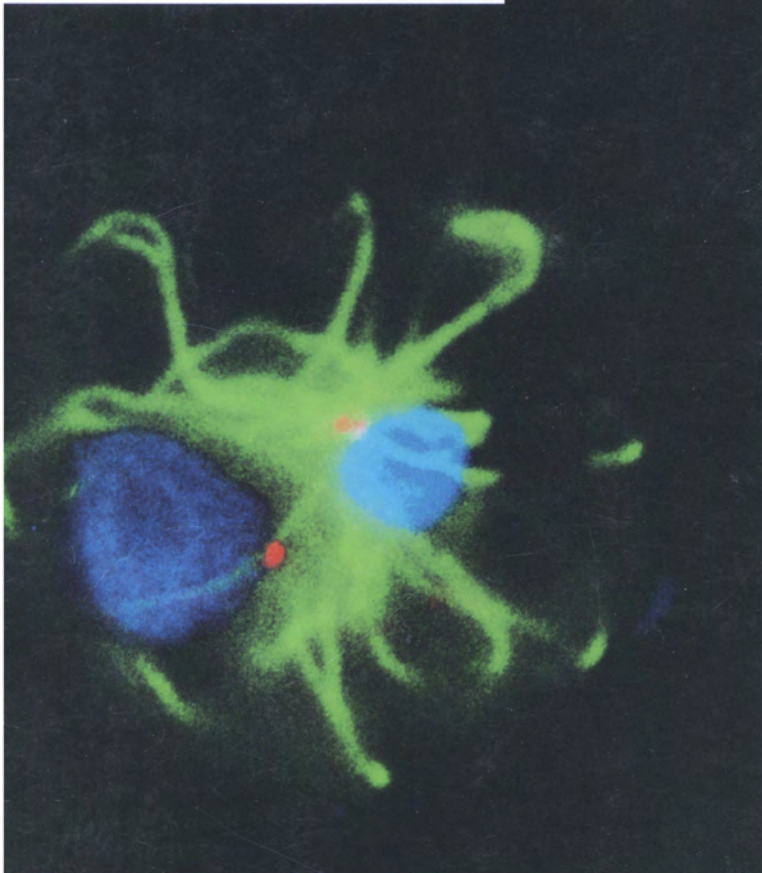
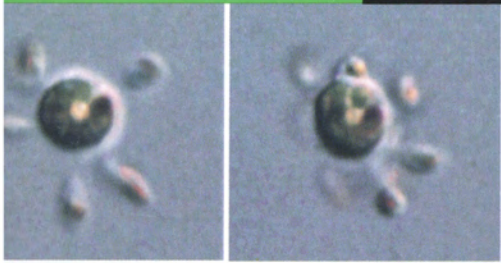


Phycological Research

Volume 46 • Issue 3 • September 1998

ISSN 1322-0829



b

Blackwell
Science

The Japanese
Society of
Phycology

Phycological Research

EDITOR-IN-CHIEF

Hiroshi Kawai
Kobe University Research Center for Inland Seas, Rokkodai, Kobe 657, Japan

ASSOCIATE EDITORS

Sung Min Boo Department of Biology Chungnam National University Korea	Eric C. Henry Department of Botany and Plant Pathology Oregon State University USA	Shuji Hino Faculty of Science Yamagata University Japan	Robert J. King School of Biological Sciences University of New South Wales, Australia	In Kyu Lee Department of Biology Seoul National University Korea
Sandra C. Lindstrom Department of Botany University of British Columbia, Canada	Taizo Motomura Institute of Algological Research, Hokkaido University, Japan	Kazuo Okuda Faculty of Science Kochi University Japan	Yoshihiro Shiraiwa Institute of Biological Sciences, University of Tsukuba, Japan	Shin Watanabe Faculty of Education Toyama University Japan

EDITORIAL ADVISORY BOARD

Robert A. Andersen <i>Maine, USA</i>	Hironao Kataoka <i>Sendai, Japan</i>	Makoto M. Watanabe <i>Tsukuba, Japan</i>
Yuji Fujita <i>Nagasaki, Japan</i>	Masao Ohno <i>Kochi, Japan</i>	John A. West <i>Melbourne, Australia</i>
Terumitsu Hori <i>Tsukuba, Japan</i>	Megumi Okazaki <i>Tokyo, Japan</i>	Yasutsugu Yokohama <i>Shimoda, Japan</i>
Ichiro Imai <i>Kyoto, Japan</i>	Noriko Takamura <i>Tsukuba, Japan</i>	

EDITORIAL SECRETARY

Mitsunobu Kamiya *Kobe University Research Center
for Inland Seas*

PRODUCTION EDITOR

Mandy Naylor *Blackwell Science Asia*

AIMS AND SCOPE *Phycological Research* is published by The Japanese Society of Phycology and complements *The Japanese Journal of Phycology*. The Journal publishes international research dealing with all aspects of phycology to facilitate the international exchange of results.

EDITORIAL CORRESPONDENCE Papers and other material for publication should be sent to the Editor-in-Chief: Dr Hiroshi Kawai, Kobe University Research Center for Inland Seas, Rokkodai, Kobe 657, Japan (fax: +81 78 803 0488; email: kawai@kobe-u.ac.jp). For details concerning the submission of papers to the Journal see the Notice to Contributors at the back of the Journal.

BUSINESS CORRESPONDENCE AND ADVERTISEMENT BOOKINGS All matters relating to orders and subscriptions, back numbers and offprints, and advertisement bookings should be sent to Blackwell Science Asia Pty Ltd, 54 University Street, Carlton, Victoria 3053, Australia (tel: +61 3 9347 0300; fax: +61 3 9347 5001; email: NicoleVivian@blacksci-asia.com.au; home page: <http://www.blackwell-science.com/australi/>). Blackwell Science Asia Pty Ltd provides a free dial (Japanese language) service from Japan (tel: 00 31 61 6238).

SUBSCRIPTION RATES The Journal is published quarterly and the subscription prices for 1998 are US\$285.00/¥32 500. The Journal is dispatched to subscribers by surface air-lifted post.

THE JAPANESE SOCIETY OF PHYCOLOGY We invite anyone who is interested in any aspect of phycology to become a member of The Japanese Society of Phycology. As a member, you will receive *Phycological Research* free of charge. The annual membership fee for individuals is ¥7000. Members who reside outside Japan will receive the English journal *Phycological Research* only and the annual membership fee is reduced to ¥6000. Those who wish to join the Society should send the application form (at back

of the Journal) together with payment to the Membership Secretary: Dr Shuji Ohtani, Department of Biology, Faculty of Education, Shimane University, Nishi Kawatsu, Matsue 690, Japan (fax: +81 852 32 6259; email: ohtanish@edu.shimane-u.ac.jp).

Members who wish to claim for missing or damaged issues of the Journal should contact the Membership Secretary.

ABSTRACTING AND INDEXING SERVICES This journal is indexed by *BIOSIS Database*, *Cambridge Scientific Abstracts*, *Chemical Abstracts Service*, *Ecological Abstracts*, *Excerpta Medica*, *GEOBASE*, *UnCover*, *University Microfilms* and *Zoological Record*.

COPYRIGHT AND PHOTOCOPYING © 1998 Blackwell Science Asia Pty Ltd. Authorization to photocopy items for internal or personal use, or the internal or personal use of specific clients, is granted by Blackwell Science Asia Pty Ltd for libraries and other users registered with the Copyright Clearance Center (CCC) Transactional Reporting Service, provided that the base fee of \$14.00 per copy is paid directly to CCC, 222 Rosewood Drive, Danvers, MA 01923, USA. This consent does not extend to other kinds of copying, such as copying for general distribution for advertising or promotional purposes, for creating new collective works or for resale. Special requests should be addressed to the publisher. 1322-0829/98 \$14.00

Publication of *Phycological Research* has been supported in part by a Grant-in-Aid for Publication of Scientific Result from the Ministry of Education, Science and Culture, Japan.

Cover Paternal inheritance of centrioles in fertilization in *Cutleria cylindrica*. Fertilization in *C. cylindrica* (top left, DIC image). Immunofluorescence microscopy (blue: nuclei; green: microtubules; red: centrin) in a 6 h-old zygote (left) and a 24 h-old zygote just before mitosis (right).

The Japanese Society of Phycology

Officers for 1998–1999

President: Ikuko Shihira-Ishikawa, Department of Biology,
Tokyo Gakugei University, Koganei-shi, Tokyo 184,
Japan

Secretary: Shigeki Mayama, Department of Biology, Tokyo
Gakugei University, Koganei-shi, Tokyo 184, Japan

Secretary (public relations): Masahiko Idei, Bunkyo
University Women's College, 1100, Namegaya,
Chigasaki, Kanagawa 253, Japan

Membership secretary: Shuji Ohtani, Department of
Biology, Faculty of Education, Shimane University, Nishi
Kawatsu, Matsue 690, Japan

Treasurer: Jiro Tanaka, Phycology Laboratory, Tokyo
University of Fisheries, Konan 4-5-7, Minato-ku, Tokyo
108, Japan

Editor, *Phycological Research*: Hiroshi Kawai, Kobe
University Research Center for Inland Seas, Rokkodai,
Kobe 657, Japan

Editor, *The Japanese Journal of Phycology*: Takeo
Horiguchi, Division of Biological Sciences, Graduate
School of Science, Hokkaido University, Sapporo 060,
Japan

Members of Executive Council 1998–1999

Yusho Aruga *Tokyo University of Fisheries*

Yoshihiko Fujita *Fukui Prefectural University*

Yuji Fujita *Nagasaki University*

Terunobu Ichimura *Hokkaido University*

Isao Inouye *Tsukuba University*

Shigeo Kawaguchi *Kyushu University*

Hiroshi Kawai *Kobe University*

Miyuki Maegawa *Mie University*

Michio Masuda *Hokkaido University*

Hiroyuki Nakahara *Kyoto University*

Takeo Nakano *Hiroshima University*

Hisayoshi Nozaki *University of Tokyo*

Kazuo Okuda *Kochi University*

Yoshihiro Shiraiwa *Niigata University*

Jun-Ichi Tsukidate *Tohoku National Fisheries Research In-*
stitute

Makoto M. Watanabe *National Institute for Environmental*
Studies

Makoto Yoshizaki *Toho University*

JOIN THE JAPANESE SOCIETY OF PHYCOLOGY AND RECEIVE FOUR ISSUES OF *PHYCOLOGICAL RESEARCH* PER YEAR FREE OF CHARGE

The Japanese Society of Phycology, founded in 1952, currently has 760 members (including 105 overseas members). The Society is open to anyone who is interested in pure or applied aspects of phycology.

Application for membership

(Please type or write in block letters)

Membership starts from 1998

Name in full: _____, _____
(Family name) (Given name and initials)

Mailing address: _____

(Postal code) (Country)

Telephone: _____ Fax: _____

E-mail: _____ Interests: _____

Signature: _____ Date: _____

**The annual fee for individual members is ¥7,000
(¥6,000 for members who reside outside Japan)**

Payment by: Visa MasterCard American Express

Card number: _____ - _____ - _____ Expiry date: _____

Signature: _____

International giro postal transfer (Postal Account No.: 01320-4-48748)

International postal money order

Send application form to:

Dr Shuji Ohtani
Department of Biology
Faculty of Education, Shimane University,
Nishi Kawatsu, Matsue 690, Japan
Fax: +81 852 32 6259; email: ohtanish@edu.shimane-u.ac.jp

Phycological Research

Volume 46 • Issue 3 • September 1998

- Mamoru Mimuro, Naoto Tamai, Akio Murakami, Masakatsu Watanabe, Mayumi Erata, Mokoto M. Watanabe, Mitsue Tokutomi and Iwao Yamazaki**
Multiple pathways of excitation energy flow in the photosynthetic pigment system of a cryptophyte, Cryptomonas sp. (CR-1) 155
- Rufus H. Thompson and Daniel E. Wujek**
Research Note: Chrysocapsopsis rupicola: A new genus and species in the Chrysophyceae 165
- Ciro Cesar Zanini Branco and Orlando Necchi Jr**
Microhabitat and morphometric variation of two Chaetophoracean (Chaetophorales, Chlorophyta) species in tropical streams of southeastern Brazil 169
- A. Q. Hurtado-Ponce, E. A. J. Chavoso and N. P. Parami**
Assessment of the seaweed-seagrass resource of Mararison Island, Culasi, Antique, Philippines 175
- Goro Yoshida, Satoshi Arima and Toshinobu Terawaki**
Growth and maturation of the 'autumn-fruited type' of Sargassum horneri (Fucales, Phaeophyta) and comparisons with the 'spring-fruited type' 183
- Chikako Nagasato, Taizo Motomura and Terunobu Ichimura**
Selective disappearance of maternal centrioles after fertilization in the anisogamous brown alga Cutleria cylindrica (Cutleriales, Phaeophyceae): Paternal inheritance of centrioles is universal in the brown algae 191
- Masanori Hiraoka and Sachito Enomoto**
The induction of reproductive cell formation of Ulva pertusa Kjellman (Ulvales, Ulvophyceae) 199

b

Blackwell
Science



1322-0829(199809)46:3;1-4