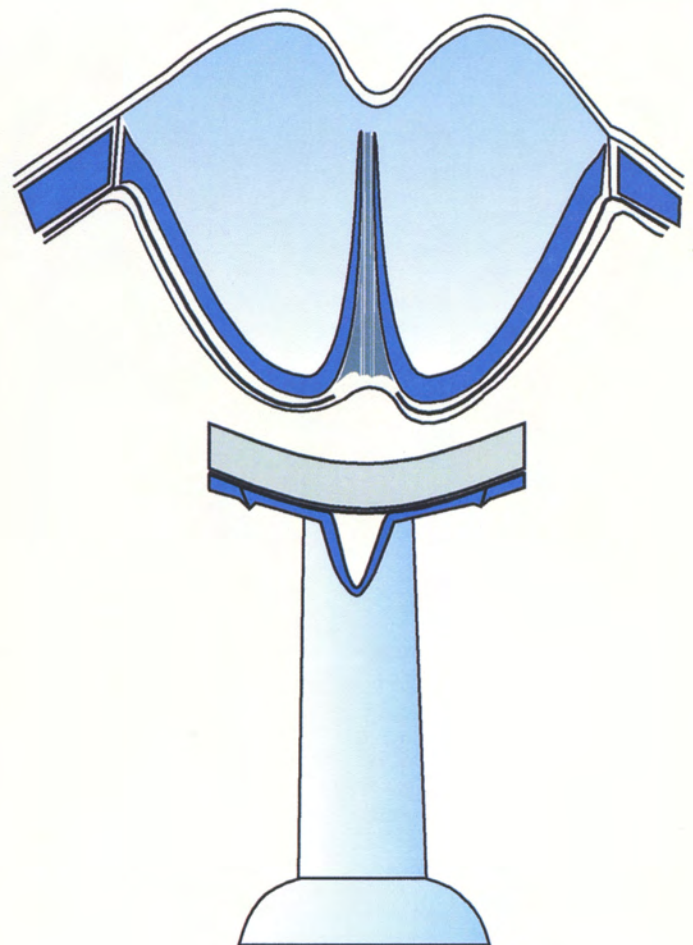
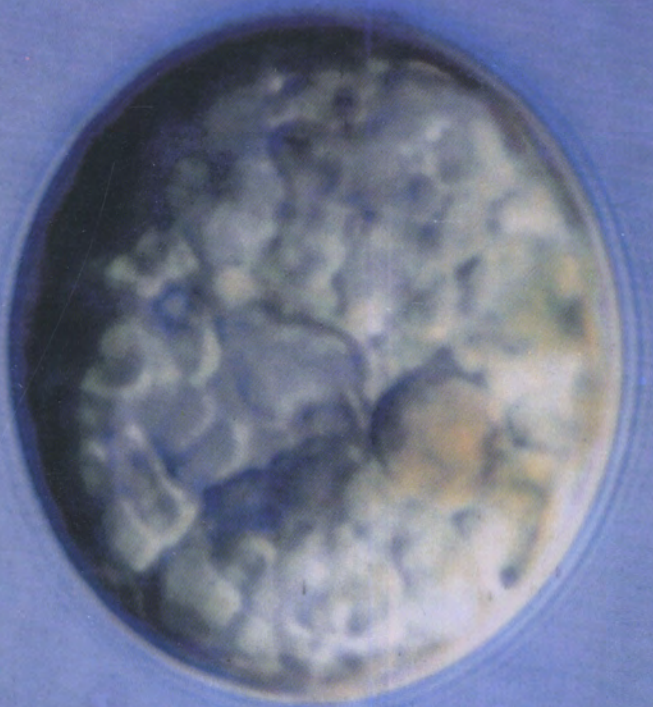


Phycological Research

Volume 46 • Issue 4 • December 1998

ISSN 1322-0829



b

Blackwell
Science

The Japanese
Society of
Phycology

Phycological Research

EDITOR-IN-CHIEF

Hiroshi Kawai

Kobe University Research Center for Inland Seas, Rokkodai, Kobe 657, Japan

ASSOCIATE EDITORS

Sung Min Boo

Department of Biology
Chungnam National
University
Korea

Eric C. Henry

Department of Botany
and Plant Pathology
Oregon State University
USA

Shuji Hino

Faculty of Science
Yamagata University
Japan

Robert J. King

School of Biological
Sciences
University of New South
Wales, Australia

In Kyu Lee

Department of Biology
Seoul National
University
Korea

Sandra C. Lindstrom

Department of Botany
University of British
Columbia, Canada

Taizo Motomura

Institute of Algological
Research, Hokkaido
University, Japan

Kazuo Okuda

Faculty of Science
Kochi University
Japan

Yoshihiro Shiraiwa

Institute of Biological
Sciences, University of
Tsukuba, Japan

Shin Watanabe

Faculty of Education
Toyama University
Japan

EDITORIAL ADVISORY BOARD

Robert A. Andersen *Maine, USA*

Yuji Fujita *Nagasaki, Japan*

Terumitsu Hori *Tsukuba, Japan*

Ichiro Imai *Kyoto, Japan*

Hironao Kataoka *Sendai, Japan*

Masao Ohno *Kochi, Japan*

Megumi Okazaki *Tokyo, Japan*

Noriko Takamura *Tsukuba, Japan*

Makoto M. Watanabe *Tsukuba, Japan*

John A. West *Melbourne, Australia*

Yasutsugu Yokohama *Shimoda, Japan*

EDITORIAL SECRETARY

Mitsunobu Kamiya *Kobe University Research Center
for Inland Seas*

PRODUCTION EDITOR

Mandy Naylor *Blackwell Science Asia*

AIMS AND SCOPE *Phycological Research* is published by The Japanese Society of Phycology and complements *The Japanese Journal of Phycology*. The Journal publishes international research dealing with all aspects of phycology to facilitate the international exchange of results.

Phycological Research has been accredited by the International Association for Plant Taxonomy for the purpose of registration of new non-vascular plant names (including fossils). For further information, see <http://bgbm3.bgbm.fu-berlin.de/iapt/registration/journals.htm>

EDITORIAL CORRESPONDENCE Papers and other material for publication should be sent to the Editor-in-Chief: Dr Hiroshi Kawai, Kobe University Research Center for Inland Seas, Rokkodai, Kobe 657, Japan (fax: +81 78 803 0488; email: kawai@kobe-u.ac.jp). For details concerning the submission of papers to the Journal see the Notice to Contributors at the back of the Journal.

BUSINESS CORRESPONDENCE AND ADVERTISEMENT BOOKINGS All matters relating to orders and subscriptions, back numbers and offprints, and advertisement bookings should be sent to Blackwell Science Asia Pty Ltd, 54 University Street, Carlton, Victoria 3053, Australia (tel: +61 3 9347 0300; fax: +61 3 9347 5001; email: Nicole.Vivian@blacksci-asia.com.au; home page: <http://www.blackwell-science.com/australi/>). Blackwell Science Asia Pty Ltd provides a free dial (Japanese language) service from Japan (tel: 00 31 61 6238).

SUBSCRIPTION RATES The Journal is published quarterly and the subscription prices for 1998 are US\$285.00/¥32 500. The Journal is dispatched to subscribers by surface air-lifted post.

THE JAPANESE SOCIETY OF PHYCOLOGY We invite anyone who is interested in any aspect of phycology to become a member of The Japanese Society of Phycology. As a member, you will receive *Phycological Research* free of charge. The annual membership fee for individuals is ¥8000. Members who reside outside Japan will receive the English journal *Phycological Research* only and the annual

membership fee is reduced to ¥6000. Those who wish to join the Society should send the application form (at back of the Journal) together with payment to the Membership Secretary: Dr Shuji Ohtani, Department of Biology, Faculty of Education, Shimane University, Nishi Kawatsu, Matsue 690, Japan (fax: +81 852 32 6259; email: ohtanish@edu.shimane-u.ac.jp).

Members who wish to claim for missing or damaged issues of the Journal should contact the Membership Secretary.

ABSTRACTING AND INDEXING SERVICES This journal is indexed by *BIOSIS Database*, *Cambridge Scientific Abstracts*, *Chemical Abstracts Service*, *Ecological Abstracts*, *Excerpta Medica*, *GEODATA*, *UnCover*, *University Microfilms* and *Zoological Record*.

COPYRIGHT AND PHOTOCOPYING © 1998 Blackwell Science Asia Pty Ltd. Authorization to photocopy items for internal or personal use, or the internal or personal use of specific clients, is granted by Blackwell Science Asia Pty Ltd for libraries and other users registered with the Copyright Clearance Center (CCC) Transactional Reporting Service, provided that the base fee of \$14.00 per copy is paid directly to CCC, 222 Rosewood Drive, Danvers, MA 01923, USA. This consent does not extend to other kinds of copying, such as copying for general distribution for advertising or promotional purposes, for creating new collective works or for resale. Special requests should be addressed to the publisher. 1322-0829/98 \$14.00

Publication of *Phycological Research* has been supported in part by a Grant-in-Aid for Publication of Scientific Result from the Ministry of Education, Science and Culture, Japan.

Cover Left: color micrograph of the non-motile stage of *Stylodinium littorale*, a coccoid marine dinoflagellate. Right: schematic drawings of the apical stalk complex (top) present in the motile stage of *S. littorale* and the stalk (bottom) in the non-motile stage. (See pp. 205–211 for details.)

The Japanese Society of Phycology

Officers for 1997–1998

President: Ikuko Shihira-Ishikawa, Department of Biology,
Tokyo Gakugei University, Koganei-shi, Tokyo 184,
Japan

Secretary: Shigeki Mayama, Department of Biology, Tokyo
Gakugei University, Koganei-shi, Tokyo 184, Japan

Secretary (public relations): Masahiko Idei, Bunkyo
University Women's College, 1100, Namegaya,
Chigasaki, Kanagawa 253, Japan

Membership secretary: Shuji Ohtani, Department of
Biology, Faculty of Education, Shimane University, Nishi
Kawatsu, Matsue 690, Japan

Treasurer: Jiro Tanaka, Phycology Laboratory, Tokyo
University of Fisheries, Konan 4-5-7, Minato-ku, Tokyo
108, Japan

Editor, *Phycological Research*: Hiroshi Kawai, Kobe
University Research Center for Inland Seas, Rokkodai,
Kobe 657, Japan

Editor, *The Japanese Journal of Phycology*: Takeo
Horiguchi, Division of Biological Sciences, Graduate
School of Science, Hokkaido University, Sapporo 060,
Japan

Members of Executive Council 1997–1998

Yusho Aruga *Tokyo University of Fisheries*
Yoshihiko Fujita *Fukui Prefectural University*
Yuji Fujita *Nagasaki University*
Terunobu Ichimura *Hokkaido University*
Isao Inouye *Tsukuba University*
Shigeo Kawaguchi *Kyushu University*
Hiroshi Kawai *Kobe University*
Miyuki Maegawa *Mie University*
Michio Masuda *Hokkaido University*
Hiroyuki Nakahara *Kyoto University*

Taketo Nakano *Hiroshima University*
Hisayoshi Nozaki *University of Tokyo*
Kazuo Okuda *Kochi University*
Yoshihiro Shiraiwa *Niigata University*
Jun-Ichi Tsukidate *Tohoku National Fisheries Research In-*
stitute
Makoto M. Watanabe *National Institute for Environmental*
Studies
Makoto Yoshizaki *Toho University*

JOIN THE JAPANESE SOCIETY OF PHYCOLOGY AND RECEIVE FOUR ISSUES OF *PHYCOLOGICAL RESEARCH* PER YEAR FREE OF CHARGE

The Japanese Society of Phycology, founded in 1952, currently has 760 members (including 105 overseas members). The Society is open to anyone who is interested in pure or applied aspects of phycology.

Application for membership

(Please type or write in block letters)

Membership starts from 1998

Name in full: _____
(Family name) (Given name and initials)

Mailing address: _____

(Postal code) (Country)

Telephone: _____ Fax: _____

Email: _____ Interests: _____

Signature: _____ Date: _____

**The annual fee for individual members is ¥8000
(¥7000 for members who reside outside Japan, ¥5000 for students who submit
a verifying statement signed by their Chairperson or Head of Department)**

Payment by: Visa MasterCard American Express

Card number: _____ - _____ - _____ Expiry date: _____

Signature: _____

International giro postal transfer (Postal Account No.: 01320-4-48748)

International postal money order

Send application form to:

Dr Koji Iwamoto
Institute of Biological Sciences
University of Tsukuba
Ibaraki 305, Japan
Fax: +81 298 53 6614; email: ivanov@anet.ne.jp

Phycological Research

Volume 46 • Issue 4 • December 1998

Takeo Horiguchi and Junko Yoshizawa-Ebata <i>Ultrastructure of Styrodinium littorale (Dinophyceae) with special reference to the stalk and apical stalk complex</i>	205
Anika S. Mostaert, Ulf Karsten, Yoshiaki Hara, Makoto M. Watanabe <i>Pigments and fatty acids of marine raphidophytes: A chemotaxonomic re-evaluation</i>	213
Nobutaka Hanagata, Isao Karube, Mitsuo Chihara, Paul C. Silva <i>Reconsideration of the taxonomy of ellipsoidal species of Chlorella (Trebouxiophyceae, Chlorophyta), with establishment of Watanabea gen. nov.</i>	221
Tsuyoshi Abe, Michio Masuda, Shigeo Kawaguchi and Shintoku Kamura <i>Taxonomic notes on Laurencia brongniartii (Rhodomelaceae, Rhodophyta)</i>	231
Michio Masuda, Shinya Uwai and Kazuhiro Kogame <i>Developmental morphology of Odonthalia floccosa (Ceramiales, Rhodophyta) in laboratory culture</i>	239
Takeo Horiguchi, Tadao Yoshida, Manabu Nagao, Isamu Wakana and Yasutugu Yokohama <i>Ultrastructure of chloroplasts in 'Marimo' (Cladophora aegagropila, Chlorophyta), and changes after exposure to light</i>	253
Hiroshi Kawai and Willem Prud'homme van Reine <i>Life history of Japanese Stypocaulon durum (Sphacelariales, Phaeophyceae)</i>	263
Ulf Karsten, Thomas Sawall and Christian Wiencke <i>A survey of the distribution of UV-absorbing substances in tropical macroalgae</i>	271
Referees	281
Author index	283
Subject index	285

b

Blackwell
Science



1322-0829(199812)46:4;1--