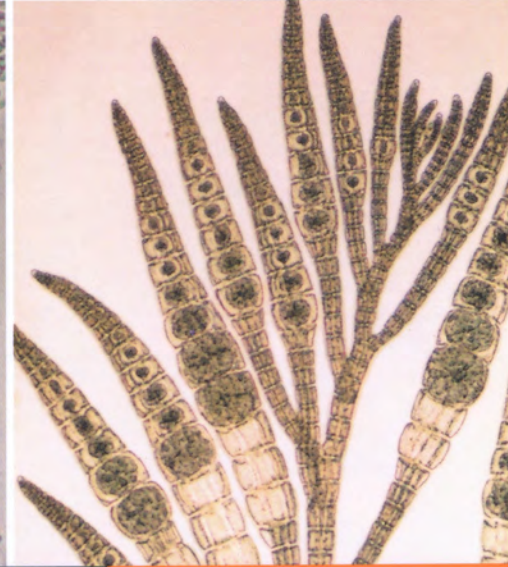
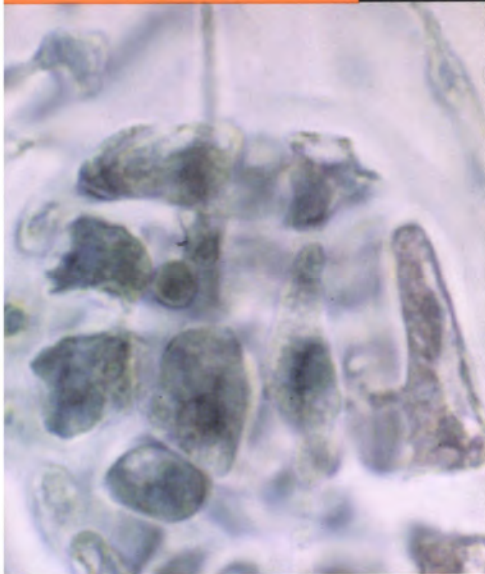


# Phycological Research

Volume 47 • Issue 4 • December 1999

ISSN 1322-0829



*b*

Blackwell  
Science  
Asia

The Japanese  
Society of  
Phycology

---

# Phycological Research

## EDITOR-IN-CHIEF

Hiroshi Kawai

Kobe University Research Center for Inland Seas, Rokkodai, Kobe 657-8501, Japan

## ASSOCIATE EDITORS

Sung Min Boo

Department of Biology  
Chungnam National  
University  
Korea

Eric C. Henry

Department of Botany  
and Plant Pathology  
Oregon State University  
USA

Shuji Hino

Faculty of Science  
Yamagata University  
Japan

Robert J. King

School of Biological  
Sciences  
University of New South  
Wales, Australia

In Kyu Lee

Department of Biology  
Seoul National  
University  
Korea

Sandra C. Lindstrom

Department of Botany  
University of British  
Columbia, Canada

Taizo Motomura

Institute of Algological  
Research, Hokkaido  
University, Japan

Kazuo Okuda

Faculty of Science  
Kochi University  
Japan

Yoshihiro Shiraiwa

Institute of Biological  
Sciences, University of  
Tsukuba, Japan

Shin Watanabe

Faculty of Education  
Toyama University  
Japan

## EDITORIAL ADVISORY BOARD

Robert A. Andersen *Maine, USA*

Yuji Fujita *Nagasaki, Japan*

Terumitsu Hori *Tsukuba, Japan*

Ichiro Imai *Kyoto, Japan*

Hironao Kataoka *Sendai, Japan*

Masao Ohno *Kochi, Japan*

Megumi Okazaki *Tokyo, Japan*

Noriko Takamura *Tsukuba, Japan*

Makoto M. Watanabe *Tsukuba, Japan*

John A. West *Melbourne, Australia*

Yasutsugu Yokohama *Shimoda, Japan*

## EDITORIAL SECRETARY

Mitsunobu Kamiya *Kobe University Research Center  
for Inland Seas*

## PRODUCTION EDITOR

Amanda Davis *Blackwell Science Asia*

---

**AIMS AND SCOPE** *Phycological Research* is published by The Japanese Society of Phycology and complements *The Japanese Journal of Phycology*. The Journal publishes international, peer-reviewed research dealing with all aspects of phycology to facilitate the international exchange of results.

*Phycological Research* has been credited by the International Association for Plant Taxonomy for the purpose of registration of new non-vascular plant names (including fossils). For further information, see <http://bgbm3.bgbm.fu-berlin.de/iapt/registration/journals.htm>

**EDITORIAL CORRESPONDENCE** Papers and other material for publication should be sent to the Editor-in-Chief-Elect: Taizo Motomura, Institute of Algological Research, Hokkaido University, Muroran 051-0003, Japan. (Fax: +81 143 22 4135; Email: [motomura@bio.sci.hokudai.ac.jp](mailto:motomura@bio.sci.hokudai.ac.jp). For details concerning the submission of papers to the Journal see the Notice to Contributors at the back of the Journal.

**SUBSCRIPTIONS AND ADVERTISEMENT BOOKINGS** The Journal is published quarterly and the 1999 subscription prices are: ¥36 400 (Japan) and A\$485.00/US\$300.00 (rest of world). The Journal is despatched to subscribers outside Australia by TNT Mailfast.

All matters relating to subscriptions, advertisement bookings, back issues, offprints and general enquiries should be sent to: Blackwell Science Asia, PO Box 378 (54 University Street), Carlton South, Victoria 3053, Australia. Email: [info@blacksci-asia.com.au](mailto:info@blacksci-asia.com.au); fax: +61 3 9347 5001; tel: +61 3 9347 0300. Blackwell Science Asia provides a free-dial (Japanese language) service from Japan (tel: 005 31 61 6238).

**THE JAPANESE SOCIETY OF PHYCOLOGY** We invite anyone who is interested in any aspect of phycology to become a member of The Japanese Society of Phycology. As a member, you will receive *Phycological Research* free of charge. The annual membership fee for individuals is ¥8000. Members who reside outside Japan will receive the English journal *Phycological Research* only and the annual

membership fee is reduced to ¥7000 for standard members and ¥5000 for student members. Those who wish to join the Society should send the application form (at back of the Journal) together with payment to the Membership Secretary: Dr Koji Iwamoto, Institute of Biological Sciences, University of Tsukuba, 1-1-1 Tennoudai, Tsukuba city, Ibaraki 305-8572, Japan (fax: +81 298 53 6614; email: [ivanov@anet.ne.jp](mailto:ivanov@anet.ne.jp))

Members who wish to claim for missing or damaged issues of the Journal should contact the Membership Secretary.

**ABSTRACTING AND INDEXING SERVICES** This journal is indexed by *BIOSIS Database*, *Cambridge Scientific Abstracts*, *Chemical Abstracts Service*, *Ecological Abstracts*, *EMBASE/Excerpta Medica*, *GEOBASE*, *UnCover*, *University Microfilms* and *Zoological Record*.

**COPYRIGHT AND PHOTOCOPYING** © 1999 Japanese Society of Phycology. Authorization to photocopy items for internal or personal use, or the internal or personal use of specific clients, is granted by Blackwell Science Asia Pty Ltd for libraries and other users registered with the Copyright Clearance Center (CCC) Transactional Reporting Service, provided that the base fee of \$14.00 per copy is paid directly to CCC, 222 Rosewood Drive, Danvers, MA 01923, USA. This consent does not extend to other kinds of copying, such as copying for general distribution for advertising or promotional purposes, for creating new collective works or for resale. Special requests should be addressed to the publisher. 1322-0829/99 \$14.00

Publication of *Phycological Research* has been supported in part by a Grant-in-Aid for Publication of Scientific Results from the Ministry of Education, Science and Culture, Japan.

---

**Cover** Morphological characters of *Neosiphonia* and *Polysiphonia*. Upper panel: *Neosiphonia* carpogonial branch (left), spermatangia (middle) and tetrasporangia (right). Lower panel: *Polysiphonia* carpogonial branch (left), spermatangia (middle) and tetrasporangia (right).

# The Japanese Society of Phycology

Officers for 1999–2000

President: Terumitsu Hori, Institute of Biological Sciences, University of Tsukuba, Tsukuba, Ibaraki 305-8572, Japan

Secretary: Shinichi Miyamura, Institute of Biological Sciences, University of Tsukuba, Tsukuba, Ibaraki 305-8572, Japan

Membership secretary: Koji Iwamoto, Institute of Biological Sciences, University of Tsukuba, Tsukuba, Ibaraki 305-8572, Japan

Treasurer: Takeshi Nakayama, Institute of Biological Sciences, University of Tsukuba, Tsukuba, Ibaraki 305-8572, Japan

Members of Executive Council 1999–2000

Tetsuro Ajisaka *Kyoto University*

Yusho Aruga

Yoshiaki Hara *Yamagata University*

Takeo Horiguchi *Hokkaido University*

Terunobu Ichimura *Hokkaido University*

Isao Inouye *University of Tsukuba*

Shigeo Kawaguchi *Kyushu University*

Miyuki Maegawa *Mie University*

Shigeki Mayama *Tokyo Gakugei University*

Hiroyuki Nakahara *Kyoto University*

Masao Ohno *Kochi University*

Shuji Ohtani *Shimane University*

Naotsune Saga *Tokai University*

Yoshihiro Shiraiwa *University of Tsukuba*

Yasutsugu Yokohama *University of Tsukuba*

Makoto Yoshizaki *Toho University*

Toshio Yotsui *Nagasaki Prefectural Institute of Fisheries*

## JOIN THE JAPANESE SOCIETY OF PHYCOLOGY AND RECEIVE FOUR ISSUES OF *PHYCOLOGICAL RESEARCH* PER YEAR FREE OF CHARGE

The Japanese Society of Phycology, founded in 1952, currently has 760 members (including 105 overseas members). The Society is open to anyone who is interested in pure or applied aspects of phycology.

### Application for membership

(Please type or write in block letters)

Membership starts from 2000

Name in full: \_\_\_\_\_  
(Family name) (Given name and initials)

Mailing address: \_\_\_\_\_

\_\_\_\_\_  
(Postal code) (Country)

Telephone: \_\_\_\_\_ Fax: \_\_\_\_\_

E-mail: \_\_\_\_\_ Interests: \_\_\_\_\_

Signature: \_\_\_\_\_ Date: \_\_\_\_\_

**The annual fee for individual members is ¥8000  
(¥7000 for members who reside outside Japan, ¥5000 for students who submit a verifying statement signed by their Chairperson or Head of Department)**

Payment by:  Visa  MasterCard  American Express

Card number: \_\_\_\_\_ - \_\_\_\_\_ - \_\_\_\_\_ - \_\_\_\_\_ Expiry date: \_\_\_\_\_

Signature: \_\_\_\_\_

International giro postal transfer (Postal Account No.: 01320-4-48748)

International postal money order

Send application form to: Dr Koji Iwamoto  
Institute of Biological Sciences  
University of Tsukuba  
1-1-1 Tennoudai, Tsukuba city  
Ibaraki 305-8572, Japan  
Fax: +81 852 32 6259; email: ivanov@anet.ne.jp

# Phycological Research

---

Volume 47 • Issue 4 • December 1999

---

Andrey A. Gontcharov and Makoto M. Watanabe <i>Rare and new desmids (Desmidiaceae, Chlorophyta) from Japan</i>	233
Shinya Uwai and Michio Masuda <i>Pterosiphonia tanakae (Rhodomelaceae, Ceramiales), a new red algal species from Japan</i>	241
Orlando Necchi Jr and Ciro C. Z. Branco <i>Phenology of a dioecious population of Batrachospermum delicatulum (Batrachospermales, Rhodophyta) in a stream from southeastern Brazil</i>	251
Kiyotaka Takishita, Kouichirou Nakano and Aritsune Uchida <i>Research note: Preliminary phylogenetic analysis of plastid-encoded genes from an anomalously pigmented dinoflagellate Gymnodinium mikimotoi (Gymnodiniales, Dinophyta)</i>	257
Nobutaka Hanagata, Nehama Malinsky-Rushansky and Zvy Dubinsky <i>Eukaryotic picoplankton, Mychonastes homosphaera (Chlorophyceae, Chlorophyta), in Lake Kinneret, Israel</i>	263
Myung Sook Kim and In Kyu Lee <i>Neosiphonia flavimarina gen. et sp. nov. with a taxonomic reassessment of the genus Polysiphonia (Rhodomelaceae, Rhodophyta)</i>	271
Referees	283
Author index	285
Subject index	287

---

**b**

Blackwell  
Science  
Asia



1322-0829(199912)47:4;1-\$