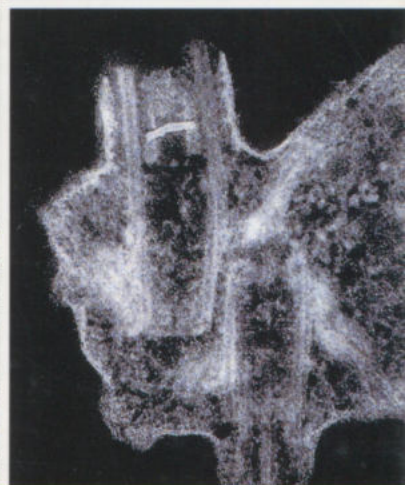
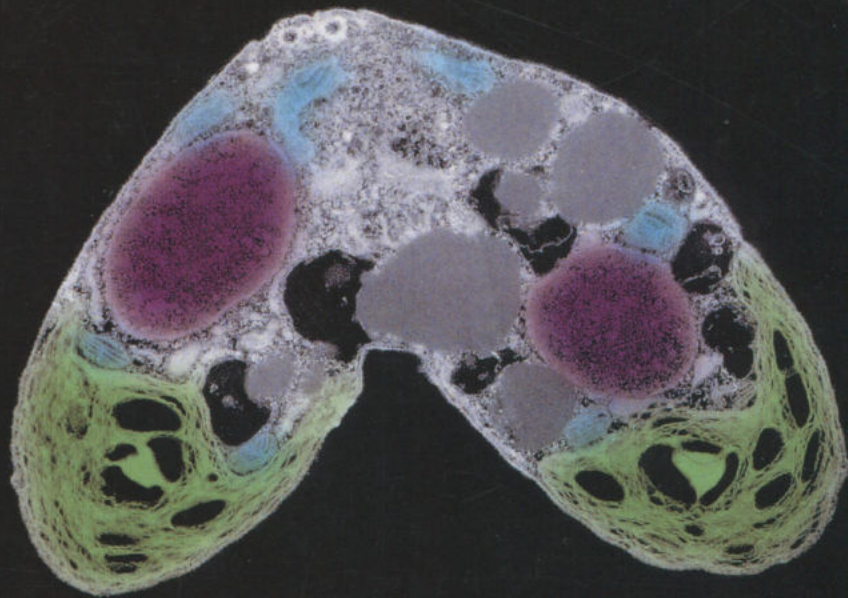


Phycological Research

Volume 48 • Issue 2 • June 2000

ISSN 1322-0829



b

Blackwell
Science
Asia

The Japanese
Society of
Phycology

Phycological Research

EDITOR-IN-CHIEF

Taizo Motomura

Institute of Algological Research, Hokkaido University, Muroran 051-0003, Japan

ASSOCIATE EDITORS

Antonio Flores-Moya
Faculty of Science
University of Málaga
Spain

David J. Garbary
Department of Biology
Saint Francis Xavier
University
Canada

Shuji Hino
Faculty of Science
Yamagata University
Japan

Takeo Horiguchi
Graduate School of
Science
Hokkaido University
Japan

Christos Katsaros
Faculty of Biology
University of Athens
Greece
Hiroshi Kawai

Kobe University
Research Center for
Inland Seas
Kobe University
Japan

Gwang Hoon Kim
Department of Biology
Kongju National University
Korea

John W. La Claire II
School of Biological
Sciences
University of Texas at
Austin
USA

Akio Murakami
Kobe University
Research Center for
Inland Seas
Kobe University
Japan

Ki Wan Nam
Department of Marine
Biology
Pukyong National
University
Korea

Hisayoshi Nozaki
Graduate School of
Science
University of Tokyo
Japan

Kazuo Okuda
Faculty of Science
Kochi University
Japan

John A. West
School of Botany
University of Melbourne
Australia

EDITORIAL ADVISORY BOARD

Yuji Fujita Nagasaki, Japan

Terumitsu Hori Tsukuba, Japan

Ichiro Imai Kyoto, Japan

Hironao Kataoka Sendai, Japan

Dieter G. Müller Konstanz, Germany

Masao Ohno Kochi, Japan

Megumi Okazaki Tokyo, Japan

Robert Sheath Guelph, Canada

Makoto M. Watanabe Tsukuba, Japan

Yasutsugu Yokohama Shizuoka, Japan

Isao Inouye Tsukuba, Japan

AIMS AND SCOPE *Phycological Research* is published by the Japanese Society of Phycology and complements the *Japanese Journal of Phycology*. The journal publishes international, peer-reviewed research dealing with all aspects of phycology to facilitate the international exchange of results. *Phycological Research* has been credited by the International Association for Plant Taxonomy for the purpose of registration of new non-vascular plant names (including fossils). For further information see <http://bgbm3.bgbm.fu-berlin.de/iapt/registration/journals/htm>. Publication of *Phycological Research* has been supported by a Grant-in-Aid for Publication of Scientific Results from the Ministry of Education, Science and Culture, Japan

EDITORIAL CORRESPONDENCE All material for publication should be sent to the Editor-in-Chief, Taizo Motomura, Institute of Algological Research, Hokkaido University, Muroran 051-0003, Japan (fax: [+81] 143 22 4135; email: motomura@bio.sci.hokudai.ac.jp). For details concerning the submission of manuscripts, please refer to the Notice to Contributors at the back of most issues of the journal or visit the journal website.

ABSTRACTING AND INDEXING SERVICES The journal is indexed by BIOSIS Database, Cambridge Scientific Abstracts, Chemical Abstracts Service, Ecological Abstracts, EMBASE/Excerpta Medica, GEOBASE, UnCover, University Microfilms and Zoological Record.

BUSINESS CORRESPONDENCE AND ADVERTISEMENT BOOKING

All matters relating to orders, subscriptions, back issues, offprints, general enquiries and advertisement bookings should be addressed to: Blackwell Science Asia Pty Ltd, PO Box 378, Carlton South, Victoria 3053, Australia (tel: [+61] 3 9349 0300; fax: [+61] 3 9347 5001; email: info@blacksci-asia.com.au; home page: <http://www.blackwell-science.com.au/asia>).

Blackwell Science Asia provides a free-dial (Japanese language) service from Japan (tel: 005 531 61 6238).

SUBSCRIPTION RATES The journal is published four times a year and the subscription prices for 2000 are: ¥38,220/US\$315 per annum. For Australian subscribers the subscription price is A\$501.12 which includes the relevant GST. The journal is despatched to subscribers outside Japan by TNT mailfast.

THE JAPANESE SOCIETY OF PHYCOLOGY We invite anyone who is interested in any aspect of phycology to become a member of the Society. As a member you will receive *Phycological Research* and the *Japanese Journal of Phycology* free of charge. The annual membership fee for individuals ¥8000. [Members who reside outside Japan will receive only the English language journal *Phycological Research* and the annual membership fee is ¥7000 (standard), ¥5000 (student).]

Those who wish to join the Society should send the application form (at the back of each issue of the journal), together with payment, to the Membership Secretary: Dr Koji Iwamoto, at the address given on the form. Members who wish to claim for missing or damaged issues should contact the Membership Secretary.

COPYRIGHT AND PHOTOCOPYING © 2000 Japanese Society of Phycology. Authorization to photocopy items for internal or personal use, or the internal or personal use of specific clients, is granted by Blackwell Science Asia Pty Ltd for libraries and other users registered with the Copyright Clearance Center (CCC) Transactional Reporting Service provided that the base fee of US\$15.00 per copy is paid directly to: CCC, 222 Rosewood Drive, Danvers, MA 01923, USA. This consent does not extend to other kinds of copying, such as copying for general distribution, for advertising or promotional purposes, for creating new collective works or for resale. Special requests should be addressed to the publisher. ISSN: 1322-0829/2000. \$15.00.

DISCLAIMER The Publisher and the Editors cannot be held responsible for errors or any consequences arising from the use of information contained in this journal. Publication of advertisements does not constitute any endorsement by the Publisher or the Editors of the products advertised.

The views and opinions expressed do not necessarily reflect those of the Society or of the Editor.

This journal is printed on acid-free paper.

Cover Ultrastructure of gametes and fertilization of *Collinsiella cava*. Transmission electron micrographs were electronically scanned and the images were manipulated using Photoshop ver. 3 software. The cell organelles, including nucleus and chloroplast, were then artificially colored.

Production Editor: Ann Seward (email: ann.seward@blacksci-asia.com.au)

Visit the journal website at: www.blackwell-science.com/pre

The Japanese Society of Phycology

Officers for 1999–2000

President: Terumitsu Hori, Institute of Biological Sciences, University of Tsukuba, Tsukuba, Ibaraki 305-8572, Japan

Secretary: Shinichi Miyamura, Institute of Biological Sciences, University of Tsukuba, Tsukuba, Ibaraki 305-8572, Japan

Membership secretary: Koji Iwamoto, Institute of Biological Sciences, University of Tsukuba, Tsukuba, Ibaraki 305-8572, Japan

Treasurer: Takeshi Nakayama, Institute of Biological Sciences, University of Tsukuba, Tsukuba, Ibaraki 305-8572, Japan

Members of Executive Council 1999–2000

Tetsuro Ajisaka *Kyoto University*
Yusho Aruga *Tokyo University of Agriculture*
Yoshiaki Hara *Yamagata University*
Takeo Horiguchi *Hokkaido University*
Terunobu Ichimura *Hokkaido University*
Isao Inouye *University of Tsukuba*
Shigeo Kawaguchi *Kyushu University*
Miyuki Maegawa *Mie University*
Shigeki Mayama *Tokyo Gakugei University*

Hiroyuki Nakahara *Kyoto University*
Masao Ohno *Kochi University*
Shuji Ohtani *Shimane University*
Naotsune Saga *Tokai University*
Yoshihiro Shiraiwa *University of Tsukuba*
Makoto Yoshizaki *Toho University*
Toshio Yotsui *Nagasaki Prefectural Institute of Fisheries*
Shin Watanabe *Toyama University*

JOIN THE JAPANESE SOCIETY OF PHYCOLOGY AND RECEIVE FOUR ISSUES OF *PHYCOLOGICAL RESEARCH* PER YEAR FREE OF CHARGE

The Japanese Society of Phycology, founded in 1952, currently has 760 members (including 105 overseas members). The Society is open to anyone who is interested in pure or applied aspects of phycology.

Application for membership

(Please type or write in block letters)

Membership starts from 2000

Name in full: _____
(Family name) (Given name and initials)

Mailing address: _____

(Postal code) (Country)

Telephone: _____ Fax: _____

E-mail: _____ Interests: _____

Signature: _____ Date: _____

The annual fee for individual members is ¥8000

(¥7000 for members who reside outside Japan, ¥5000 for students who submit a verifying statement signed by their Chairperson or Head of Department)

Payment by: ☐ Visa ☐ MasterCard ☐ American Express

Card number: _____ - _____ - _____ - _____ Expiry date: _____

Signature: _____

☐ International giro postal transfer (Postal Account No.: 01320-4-48748)

☐ International postal money order

Send application form to: Dr Koji Iwamoto
Institute of Biological Sciences
University of Tsukuba
1-1-1 Tennoudai, Tsukuba city
Ibaraki 305-8572, Japan
Fax: +81 852 32 6259; email: ivanov@anet.ne.jp

Phycological Research

Volume 48 • Issue 2 • June 2000

- Charles S. Vairappan and Minoru Suzuki
Dynamics of total surface bacteria and bacterial species counts during desiccation in the Malaysian sea lettuce, Ulva reticulata (Ulvales, Chlorophyta) 55
- Takeshi Nakayama and Isao Inouye
Ultrastructure of the biflagellate gametes of Collinsiella cava (Ulvophyceae, Chlorophyta) 63
- Akihiro Tuji
Observation of developmental processes in loosely attached diatom (Bacillariophyceae) communities 75
- Kiyotaka Takishita, Kouichirou Nakano and Aritsune Uchida
Research note: Origin of the plastid in the anomalously pigmented dinoflagellate Gymnodinium mikimotoi (Gymnodiniales, Dinophyta) as inferred from phylogenetic analysis based on the gene encoding the large subunit of form I-type RuBisCO 85
- Masashi Shinohara, Ryuichi Nishida, Makoto Nishizawa, Hideo Bando, Taizo Motomura and Masakazu Tatewaki
Research note: Guluronate contents of alginate in Laminaria japonica and Laminaria angustata fronds in laboratory culture 91
- Satoshi Shimada and Michio Masuda
New records of Gelidiella pannosa, Pterocliadiella caerulescens and Pterocliadiella caloglossoides (Rhodophyta, Gelidiales) from Japan 95
- Makoto Mizuno
Research note: Sexual auxosporulation of the marine diatom Navicula directa var. directa 103
- Sada-aki Yoshimatsu, Saburo Toriumi and John D. Dodge
Light and scanning microscopy of two benthic species of Amphidiniopsis (Dinophyceae), Amphidiniopsis haxagona sp. nov and Amphidiniopsis swedmarkii from Japan 107
- Shigeo Ichiki, Horoyuki Mizuta and Hirotooshi Yamamoto
Effects of irradiance, water temperature and nutrients on the growth of sporelings of the crustose coralline alga, Lithophyllum yessoense Fosl e (Corallinales, Rhodophyceae) 115
- Kazuhiko Koike, Kanae Koike, Minoru Takagi, Takehiko Ogato and Takashi Ishimaru
Research note: Evidence of phagotrophy in Dinophysis fortii (Dinophysiales, Dinophyceae), a dinoflagellate that causes diarrhetic shellfish poisoning (DSP) 121
-

b

Blackwell
Science
Asia



1322-0829(200006)48:2;1-I