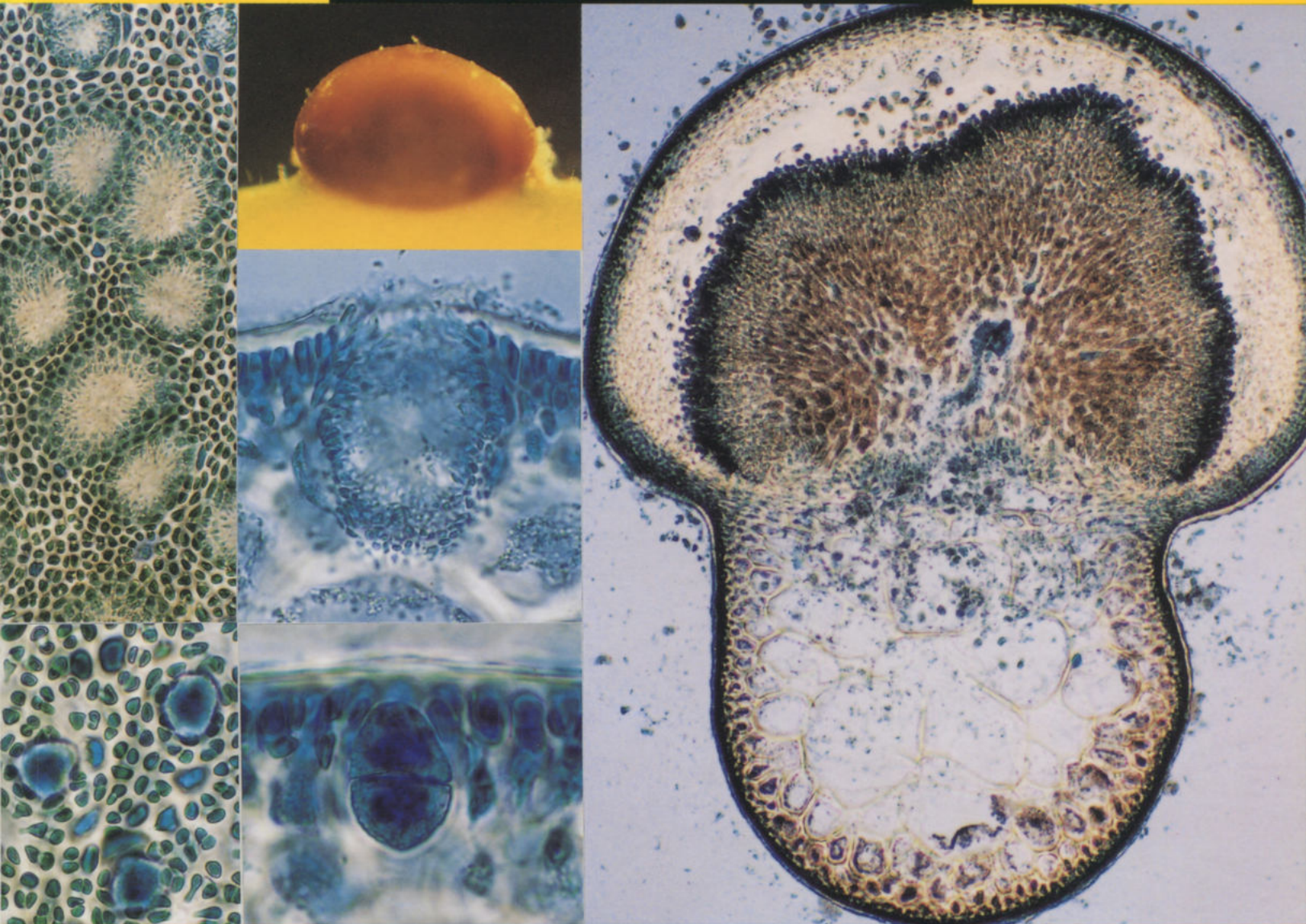


Phycological Research

Volume 48 • Issue 4 • December 2000

ISSN 1322-0829



b

Blackwell
Science
Asia

The Japanese
Society of
Phycology

Phycological Research

EDITOR-IN-CHIEF

Taizo Motomura

Institute of Algological Research, Hokkaido University, Muroran 051-0003, Japan

ASSOCIATE EDITORS

Antonio Flores-Moya
Faculty of Science
University of Málaga
Spain

David J. Garbary
Department of Biology
Saint Francis Xavier
University
Canada

Shuji Hino
Faculty of Science
Yamagata University
Japan

Takeo Horiguchi
Graduate School of
Science
Hokkaido University
Japan

Christos Katsaros
Faculty of Biology
University of Athens
Greece

Hiroshi Kawai
Kobe University
Research Center for
Inland Seas
Kobe University
Japan

Gwang Hoon Kim
Department of Biology
Kongju National University
Korea

John W. La Claire II
School of Biological
Sciences
University of Texas at
Austin
USA

Akio Murakami
Kobe University
Research Center for
Inland Seas
Kobe University
Japan

Ki Wan Nam
Department of Marine
Biology
Pukyong National
University
Korea

Hisayoshi Nozaki
Graduate School of
Science
University of Tokyo
Japan

Kazuo Okuda
Faculty of Science
Kochi University
Japan

John A. West
School of Botany
University of Melbourne
Australia

EDITORIAL ADVISORY BOARD

Yuji Fujita Nagasaki, Japan
Terumitsu Hori Tsukuba, Japan
Ichiro Imai Kyoto, Japan
Hironao Kataoka Sendai, Japan

Dieter G. Müller Konstanz, Germany
Masao Ohno Kochi, Japan
Megumi Okazaki Tokyo, Japan
Robert Sheath Guelph, Canada

Makoto M. Watanabe Tsukuba, Japan
Yasutsugu Yokohama Shizugawa, Japan
Isao Inouye Tsukuba, Japan

AIMS AND SCOPE *Phycological research* is published by the Japanese Society of Phycology and complements the *Japanese Journal of Phycology*. The journal publishes international, peer-reviewed research dealing with all aspects of phycology to facilitate the international exchange of results. All articles are peer-reviewed by at least two researchers expert in the field of the submitted paper. *Phycological Research* has been credited by the International Association for Plant Taxonomy for the purpose of registration of new non-vascular plant names (including fossils). For further information see <http://bgbm3.bgbm.fu-berlin.de/iapt/registration/journals/htm>. Publication of *Phycological Research* has been supported by a Grant-in-Aid for Publication of Scientific Results from the Ministry of Education, Science and Culture, Japan

ABSTRACTING AND INDEXING SERVICES The journal is indexed by BIOSIS Database, Cambridge Scientific Abstracts, Chemical Abstracts Service, Ecological Abstracts, EMBASE/Excerpta Medica, GEOBASE, UnCover, University Microfilms and Zoological Record.

EDITORIAL CORRESPONDENCE All material for publication should be sent to the Editor-in-Chief, Taizo Motomura, Institute of Algological Research, Hokkaido University, Muroran 051-0003, Japan (fax: (+81) 143 22 4135; email: motomura@bio.sci.hokudai.ac.jp). For details instructions concerning the submission of manuscripts, please refer to the Instructions to Authors at the back of a recent issue of the journal or visit the journal web page.

THE JAPANESE SOCIETY OF PHYCOLOGY We invite anyone who is interested in any aspect of phycology to become a member of the Society. As a member you will receive *Phycological Research* and the *Japanese Journal of Phycology* free of charge. The annual membership fee for individuals ¥8000. (Members who reside outside Japan will receive only the English language journal *Phycological Research* and the annual membership fee is ¥7000 (standard), ¥5000 (student).)

Those who wish to join the Society should send the application form (at the back of each issue of the journal), together with payment, to the Membership Secretary: Dr Koji Iwamoto, at the address given on the form. Members who wish to claim for missing or damaged issues should contact the Membership Secretary.

BUSINESS CORRESPONDENCE AND ADVERTISEMENT BOOKING

All matters relating to orders, subscriptions, back issues, offprints, advertisement bookings and general enquiries should be addressed to: Blackwell Science Asia Pty Ltd, PO Box 378, Carlton South, Victoria 3053, Australia (tel: (+61) 3 9349 0300; fax: (+61) 3 9347 5001; email: info@blacksci-asia.com.au).

Blackwell Science Asia provides a free-dial (Japanese language) service from Japan (tel: 005 31 61 6238).

SUBSCRIPTION RATES The journal is published four times per year and the prices for 2001 are as follows: *Institution*: Aus\$604 (Australia); Aus\$549 (New Zealand); ¥40 900 (Japan); US\$335 (rest of world). *Personal*: Aus\$243 (Australia); Aus\$221 (New Zealand); US\$135 (rest of world). For online subscription prices please contact subs@blacksci-asia.com.au. The journal is despatched to subscribers by surface air-lifted delivery.

COPYRIGHT AND PHOTOCOPYING © 2000 Japanese Society of Phycology. Authorization to photocopy items for internal or personal use, or the internal or personal use of specific clients, is granted by Blackwell Science Asia Pty Ltd for libraries and other users registered with the Copyright Clearance Center (CCC) Transactional Reporting Service provided that the base fee of US\$15 per copy is paid directly to: CCC, 222 Rosewood Drive, Danvers, MA 01923, USA. This consent does not extend to other kinds of copying, such as copying for general distribution, for advertising or promotional purposes, for creating new collective works or for resale. Special requests should be addressed to the publisher. ISSN: 1322-0829/2001. US\$15.

DISCLAIMER The Publisher, the Society and the Editors cannot be held responsible for errors or any consequences arising from the use of information contained in this journal; the views and opinions expressed do not necessarily reflect those of the Publisher, the Society or the Editors, neither does the publication of advertisements constitute any endorsement by the Publisher, the Society or the Editors of the products advertised.

This journal is printed on acid-free paper.

Cover Reproductive structures of *Gracilaria firma* from Okinawa, Japan. Upper left and center middle: spermatangial conceptacles. Upper middle and right: cystocarp. Lower left and middle: tetrasporangia.

Production Editor: Ann Seward (email: ann.seward@blacksci-asia.com.au)

Visit the journal website at: www.blackwell-science.com/pr

The Japanese Society of Phycology

Officers for 1999–2000

President: Terumitsu Hori, Institute of Biological Sciences, University of Tsukuba, Tsukuba, Ibaraki 305-8572, Japan

Secretary: Shinichi Miyamura, Institute of Biological Sciences, University of Tsukuba, Tsukuba, Ibaraki 305-8572, Japan

Membership secretary: Koji Iwamoto, Institute of Biological Sciences, University of Tsukuba, Tsukuba, Ibaraki 305-8572, Japan

Treasurer: Takeshi Nakayama, Institute of Biological Sciences, University of Tsukuba, Tsukuba, Ibaraki 305-8572, Japan

Members of Executive Council 1999–2000

Tetsuro Ajisaka *Kyoto University*
Yusho Aruga *Tokyo University of Agriculture*
Yoshiaki Hara *Yamagata University*
Takeo Horiguchi *Hokkaido University*
Terunobu Ichimura *Hokkaido University*
Isao Inouye *University of Tsukuba*
Shigeo Kawaguchi *Kyushu University*
Miyuki Maegawa *Mie University*
Shigeki Mayama *Tokyo Gakugei University*

Hiroyuki Nakahara *Kyoto University*
Masao Ohno *Kochi University*
Shuji Ohtani *Shimane University*
Naotsune Saga *Tokai University*
Yoshihiro Shiraiwa *University of Tsukuba*
Makoto Yoshizaki *Toho University*
Toshio Yotsui *Nagasaki Prefectural Institute of Fisheries*
Shin Watanabe *Toyama University*

JOIN THE JAPANESE SOCIETY OF PHYCOLOGY AND RECEIVE FOUR ISSUES OF *PHYCOLOGICAL RESEARCH* PER YEAR FREE OF CHARGE

The Japanese Society of Phycology, founded in 1952, currently has 760 members (including 105 overseas members). The Society is open to anyone who is interested in pure or applied aspects of phycology.

Application for membership

(Please type or write in block letters)

Membership starts from 2000

Name in full: _____
(Family name) (Given name and initials)

Mailing address: _____

(Postal code) (Country)

Telephone: _____ Fax: _____

E-mail: _____ Interests: _____

Signature: _____ Date: _____

The annual fee for individual members is ¥8000

(¥7000 for members who reside outside Japan, ¥5000 for students who submit a verifying statement signed by their Chairperson or Head of Department)

Payment by: ☐ Visa ☐ MasterCard ☐ American Express

Card number: _____ - _____ - _____ - _____ Expiry date: _____

Signature: _____

☐ International giro postal transfer (Postal Account No.: 01320-4-48748)

☐ International postal money order

Send application form to: Dr Koji Iwamoto
Institute of Biological Sciences
University of Tsukuba
1-1-1 Tennoudai, Tsukuba city
Ibaraki 305-8572, Japan
Fax: +81 852 32 6259; email: ivanov@anet.ne.jp

Phycological Research

Volume 48 • Issue 4 • December 2000

Ken-Ichiro Ishida, Noriko Ishida and Yoshiaki Hara <i>Lotharella amoebiformis</i> sp. nov.: A new species of chlorarachniophytes from Japan	221
Akihiro Tuji and John Patrick Kocielek <i>Morphology and taxonomy of Stephanodiscus suzukii</i> sp. nov. and <i>Stephanodiscus pseudosuzukii</i> sp. nov. (Bacillariophyceae) from Lake Biwa, Japan, and <i>S. carconensis</i> from North America	231
Alison R. Sherwood and Robert G. Sheath <i>Microscopic analysis and seasonality of gemma production in the freshwater red alga Hildenbrandia angolensis</i> (Hildenbrandiales, Rhodophyta)	241
Valérie Stiger, Takeo Horiguchi, Tadao Yoshida, Annette W. Coleman and Michio Masuda <i>Phylogenetic relationships of Sargassum (Sargassaceae, Phaeophyceae) with reference to a taxonomic revision of the section Phyllocystae based on ITS-2 nrDNA sequences</i>	251
Shin-Ichiro Abe, Tamotsu Nagumo and Jiro Tanaka <i>Effects of current on the development of loosely and tightly attached layers in periphyton communities</i>	261
Shinya Uwai, Kazuhiro Kogame and Michio Masuda <i>Morphology and life history of four Japanese species of Elachista (Elachistaceae, Phaeophyceae), including a new record of E. fucicola</i>	267
Srinivasa Rao Uppalapati and Yuji Fujita <i>Red rot resistance in interspecific protoplast fusion product progeny of Porphyra yezoensis and P. tenuipedalis (Bangiales, Rhodophyta)</i>	281
Ryuta Terada, Masasuke Baba and Hirotochi Yamamoto <i>Research note: New record of Gracilaria firma Chang et Xia (Rhodophyta) from Okinawa, Japan</i>	291
Referees	295
Author index	297
Subject index	299

b

Blackwell
Science
Asia



1322-0829(200012)48:4;1-F