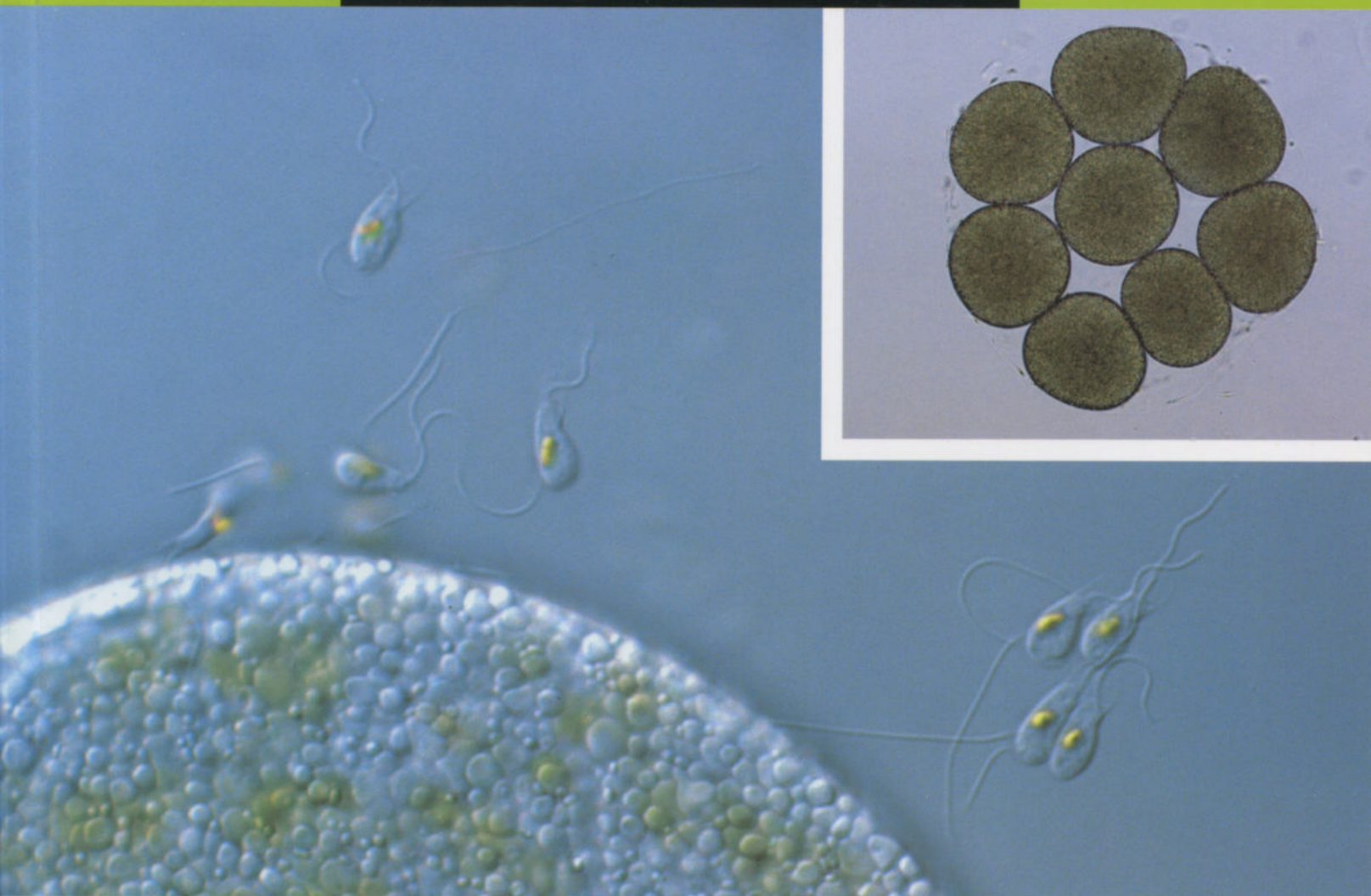


# Phycological Research

Volume 49 • Issue 4 • December 2001

ISSN 1322-0829



*b*

Blackwell  
Science  
Asia

The Japanese  
Society of  
Phycology



# Phycological Research

## EDITOR-IN-CHIEF

Taizo Motomura

Institute of Algological Research, Hokkaido University, Muroran 051-0003, Japan

## ASSOCIATE EDITORS

Put O. Ang Jr  
Department of Biology  
Chinese University of  
Hong Kong  
China

Antonio Flores-Moya  
Faculty of Science  
University of Málaga  
Spain

David J. Garbary  
Department of Biology  
Saint Francis Xavier  
University  
Canada

Shuji Hino  
Faculty of Science  
Yamagata University  
Japan

Takeo Horiguchi  
Graduate School of  
Science  
Hokkaido University  
Japan

Christos Katsaros  
Faculty of Biology  
University of Athens  
Greece

Hiroshi Kawai  
Kobe University  
Research Center for  
Inland Seas  
Kobe University  
Japan

Gwang Hoon Kim  
Department of Biology  
Kongju National University  
Korea

John W. La Claire II  
School of Biological  
Sciences  
University of Texas at  
Austin  
USA

Akio Murakami  
Kobe University  
Research Center for  
Inland Seas  
Kobe University  
Japan

Ki Wan Nam  
Department of Marine  
Biology  
Pukyong National  
University  
Korea

Hisayoshi Nozaki  
Graduate School of  
Science  
University of Tokyo  
Japan

Kazuo Okuda  
Faculty of Science  
Kochi University  
Japan

John A. West  
School of Botany  
University of Melbourne  
Australia

Giuseppe C. Zuccarello  
School of Biological  
Science  
University of New  
South Wales  
Australia

## EDITORIAL ADVISORY BOARD

Yuji Fujita Nagasaki, Japan  
Terumitsu Hori Tsukuba, Japan  
Ichiro Imai Kyoto, Japan  
Hironao Kataoka Sendai, Japan

Dieter G. Müller Konstanz, Germany  
Masao Ohno Kochi, Japan  
Megumi Okazaki Tokyo, Japan  
Robert Sheath Guelph, Canada

Makoto M. Watanabe Tsukuba, Japan  
Yasutsugu Yokohama Shizugawa, Japan  
Isao Inouye Tsukuba, Japan

**AIMS AND SCOPE** *Phycological Research* is published by the Japanese Society of Phycology and complements the *Japanese Journal of Phycology*. The journal publishes international, peer-reviewed research dealing with all aspects of phycology to facilitate the international exchange of results. All articles are peer-reviewed by at least two researchers expert in the field of the submitted paper. *Phycological Research* has been credited by the International Association for Plant Taxonomy for the purpose of registration of new non-vascular plant names (including fossils). For further information see <http://bgbm3.bgbm.fu-berlin.de/iapt/registration/journals/htm>. Publication of *Phycological Research* has been supported by a Grant-in-Aid for Publication of Scientific Results from the Ministry of Education, Science and Culture, Japan

**ABSTRACTING AND INDEXING SERVICES** The journal is indexed by BIOSIS Database, Cambridge Scientific Abstracts, Chemical Abstracts Service, Ecological Abstracts, EMBASE/Excerpta Medica, GEOBASE, UnCover, University Microfilms and Zoological Record.

**EDITORIAL CORRESPONDENCE** All material for publication should be sent to the Editor-in-Chief, Taizo Motomura, Muroran Marine Stations, Field Science Centre for Northern Biosphere, Hokkaido University, Muroran 051-0003, Japan (fax: (+81) 143 22 4135; email: [motomura@bio.sci.hokudai.ac.jp](mailto:motomura@bio.sci.hokudai.ac.jp)). For details instructions concerning the submission of manuscripts, please refer to the Instructions to Authors at the back of a recent issue of the journal or visit the journal web page.

**THE JAPANESE SOCIETY OF PHYCOLOGY** We invite anyone who is interested in any aspect of phycology to become a member of the Society. As a member you will receive *Phycological Research* and the *Japanese Journal of Phycology* free of charge. The annual membership fee for individuals ¥8000. (Members who reside outside Japan will receive only the English language journal *Phycological Research* and the annual membership fee is ¥7000 (standard), ¥5000 (student).)

Those who wish to join the Society should send the application form (at the back of each issue of the journal), together with payment, to the Membership Secretary: Dr Koji Iwamoto, at the address given on the form. Members who wish to claim for missing or damaged issues should contact the Membership Secretary.

**Production Editor:** Deborah Wyatt  
(email: [deborah.wyatt@blacksci-asia.com.au](mailto:deborah.wyatt@blacksci-asia.com.au))

**Visit the journal website at:** [www.blackwell-science.com/pre](http://www.blackwell-science.com/pre)

## BUSINESS CORRESPONDENCE AND ADVERTISEMENT BOOKING

All matters relating to orders, subscriptions, back issues, offprints, advertisement bookings and general enquiries should be addressed to: Blackwell Science Asia Pty Ltd, PO Box 378, Carlton South, Victoria 3053, Australia (tel: (+61) 3 9349 0300; fax: (+61) 3 9347 5001; email: [info@blacksci-asia.com.au](mailto:info@blacksci-asia.com.au); URL: [www.blackwell-science.com/pre](http://www.blackwell-science.com/pre)).

Blackwell Science Asia's Tokyo Office has Japanese speakers available to answer queries on tel: 03 5802 6781; fax: 03 5802 6782. (For international calls, the country code for Japan is 81.)

**SUBSCRIPTION RATES** The journal is published four times per year and the prices for 2001 are as follows: *Institution:* Aus\$604 (Australia); Aus\$549 (New Zealand); ¥40 900 (Japan); US\$335 (rest of world). *Personal:* Aus\$243 (Australia); Aus\$221 (New Zealand); US\$135 (rest of world). For online subscription prices please contact [subs@blacksci-asia.com.au](mailto:subs@blacksci-asia.com.au). The journal is despatched to subscribers by surface air-lifted delivery.

**COPYRIGHT AND PHOTOCOPYING** © 2001 Japanese Society of Phycology. Authorization to photocopy items for internal or personal use, or the internal or personal use of specific clients, is granted by Blackwell Science Asia Pty Ltd for libraries and other users registered with the Copyright Clearance Center (CCC) Transactional Reporting Service provided that the base fee of US\$15 per copy is paid directly to: CCC, 222 Rosewood Drive, Danvers, MA 01923, USA. This consent does not extend to other kinds of copying, such as copying for general distribution, for advertising or promotional purposes, for creating new collective works or for resale. Special requests should be addressed to the publisher. ISSN: 1322-0829/2001. US\$15.

**DISCLAIMER** The Publisher, the Society and the Editors cannot be held responsible for errors or any consequences arising from the use of information contained in this journal; the views and opinions expressed do not necessarily reflect those of the Publisher, the Society or the Editors, neither does the publication of advertisements constitute any endorsement by the Publisher, the Society or the Editors of the products advertised.

*This journal is printed on acid-free paper.*

**Cover** Fertilization of the brown alga *Fucus distichus*. Sperm has a chloroplast with eyespot, anterior and posterior flagella, and characteristic proboscis. Numerous vesicles are observed on the surface of the egg. Inset shows an oogonium containing eight eggs.



# The Japanese Society of Phycology

Officers for 2001–2002

President: Yoshiaki Hara, Faculty of Science, Yamagata University, Yamagata 990-8560, Japan

Secretary: Tasuku Hishinuma, Faculty of Science, Yamagata University, Yamagata 990-8560, Japan

Membership secretary: Ichiro Mine, Faculty of Science, Kochi University, Kochi 780-8520, Japan

Treasurer: Naoto Hanzawa, Faculty of Science, Yamagata University, Yamagata 990-8560, Japan

Members of Executive Council 2001–2002

Tetsuro Ajisaka *Kyoto University*  
Hideomi Amano *Mie University*  
Terumitsu Hori *University of Tsukuba*  
Takeo Horiguchi *Hokkaido University*  
Daisuke Fujita *Toyama Prefectural Fisheries Research Institute*

Hiroshi Kawai *Kobe University*  
Masahiko Idei *Bunkyo University Women's College*  
Masafumi Ima *Nagasaki University*  
Taku Misonou *Yamanashi University*  
Taizo Motomura *Hokkaido University*

Tamotsu Nagumo *The Nippon Dental University*  
Tadahide Noro *Kagoshima University*  
Masao Ohno *Kochi University*  
Munekatsu Saitoh *Morioka Junior College*  
Jiro Tanaka *Tokyo University of Fisheries*  
Toshinobu Terawaki *National Research Institute of Fisheries and Environment of Inland Sea*  
Yasutsugu Yokohama *Shizugawa Nature Center*  
Makoto M. Watanabe *National Institute for Environmental Studies*

## JOIN THE JAPANESE SOCIETY OF PHYCOLOGY AND RECEIVE FOUR ISSUES OF *PHYCOLOGICAL RESEARCH* PER YEAR FREE OF CHARGE

The Japanese Society of Phycology, founded in 1952, currently has 760 members (including 105 overseas members). The Society is open to anyone who is interested in pure or applied aspects of phycology.

### Application for membership

(Please type or write in block letters)

Membership starts from 2001

Name in full: \_\_\_\_\_  
(Family name) (Given name and initials)

Mailing address: \_\_\_\_\_

\_\_\_\_\_  
(Postal code) (Country)

Telephone: \_\_\_\_\_ Fax: \_\_\_\_\_

E-mail: \_\_\_\_\_ Interests: \_\_\_\_\_

Signature: \_\_\_\_\_ Date: \_\_\_\_\_

**The annual fee for individual members is ¥8000**

**(¥7000 for members who reside outside Japan, ¥5000 for students who submit a verifying statement signed by their Chairperson or Head of Department)**

Payment by: ☐ Visa ☐ MasterCard ☐ American Express

Card number: \_\_\_\_\_ - \_\_\_\_\_ - \_\_\_\_\_ Expiry date: \_\_\_\_\_

Signature: \_\_\_\_\_

☐ International giro postal transfer (Postal Account No.: 01320-4-48748)

☐ International postal money order

Send application form to: Dr Ichiro Mine  
Faculty of Science  
Kochi University  
2-5-1 Akebono-cho,  
Kochi 780-8520, Japan  
Fax: +81 88 844 8356; email: jsphycol@anet.ne.jp

Micha M. Bayer, Stephen J. M. Droop and David G. Mann <i>Review: Digital microscopy in phycological research, with special reference to microalgae</i>	263
Shigeo Tsujimura, Kanako Ishikawa and Hajime Tsukada <i>Research note: Effect of temperature on growth of the cyanobacterium Aphanizomenon flos-aquae in Lake Biwa and Lake Yogo</i>	275
Kazuhiro Kogame, Shinya Uwai and Shigeo Kawaguchi <i>Research note: First record of Asteronema rhodochortonoides (Phaeophyceae) for the Pacific Ocean</i>	281
John A. West, Max Hommersand and G. C. Zuccarello <i>Morphology and reproduction of Bostrychia pinnata (Rhodomelaceae, Ceramiales) in laboratory culture</i>	285
Ying Yang, Kunshan Gao and Jianrong Xia <i>Research note: Effects of doubled atmospheric CO<sub>2</sub> concentration on the growth and photosynthesis of Chlamydomonas reinhardtii (Volvocales, Chlorophyceae)</i>	299
Orlando Necchi Jr and Marcelo Ribeiro Zucchi <i>Photosynthetic performance of freshwater Rhodophyta in response to temperature, irradiance, pH and diurnal rhythm</i>	305
Durba Ghoshal and Arun Goyal <i>Oxygen inhibition of dissolved inorganic carbon uptake in unicellular green algae</i>	319
Referees	325
Author index	327
Subject index	329