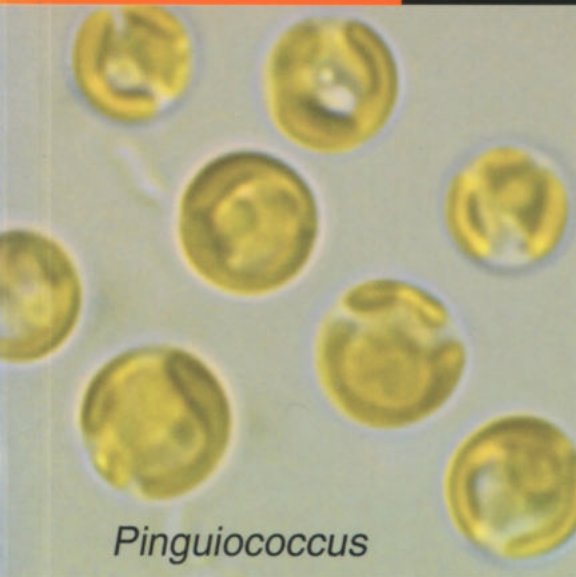


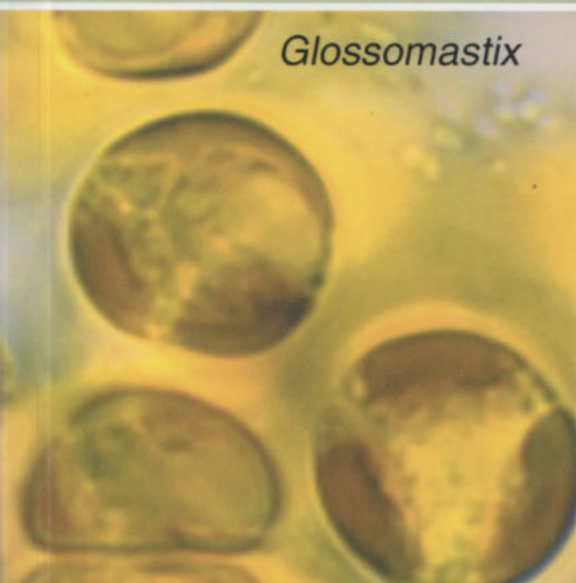
# Phycological Research

Volume 50 • Issue 1 • March 2002

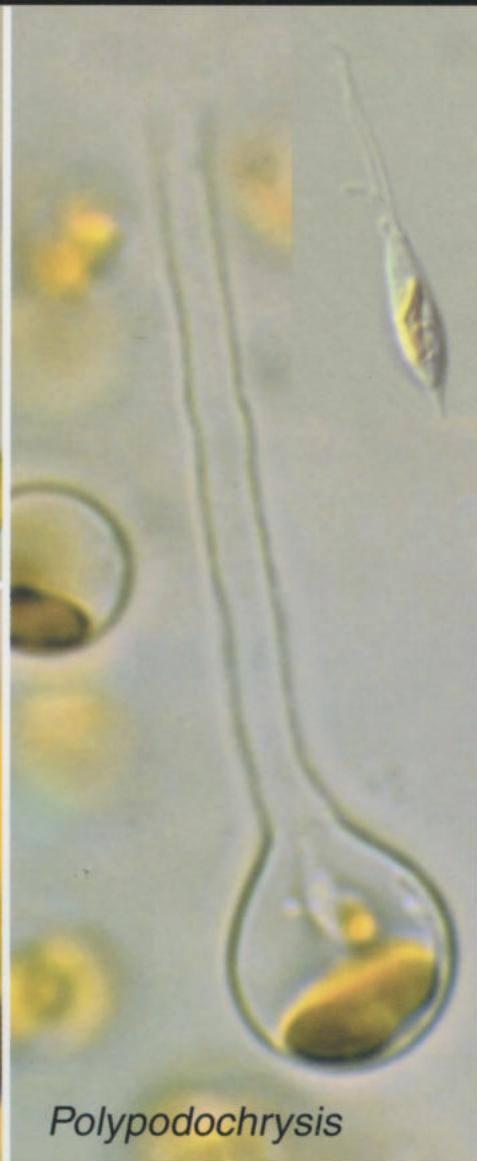
ISSN 1322-0829



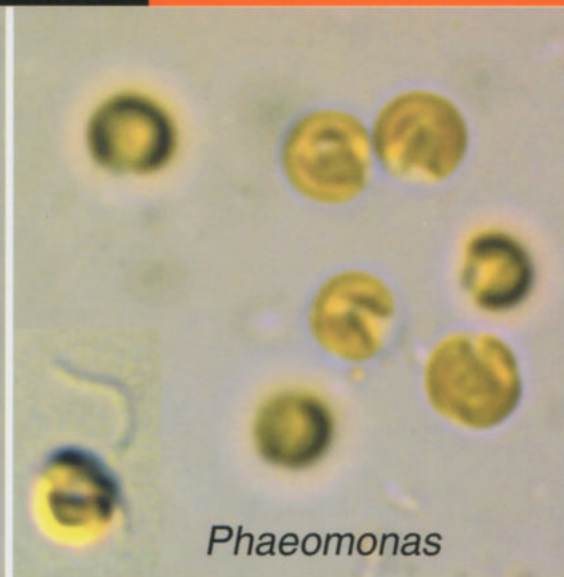
*Pinguicoccus*



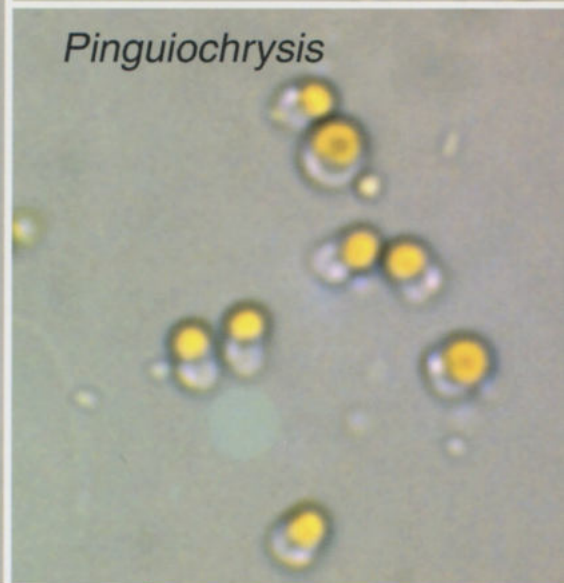
*Glossomastix*



*Polypodochrysis*



*Phaeomonas*



*Pinguiochrysis*



**Blackwell  
Publishing**

**The Japanese  
Society of  
Phycology**

# Phycological Research

## EDITOR-IN-CHIEF

Taizo Motomura

*Institute of Algological Research, Hokkaido University, Muroran 051-0003, Japan*

## ASSOCIATE EDITORS

Put O. Ang Jr  
*Department of Biology  
Chinese University of  
Hong Kong  
China*

Antonio Flores-Moya  
*Faculty of Science  
University of Málaga  
Spain*

David J. Garbary  
*Department of Biology  
Saint Francis Xavier  
University  
Canada*

Shuji Hino  
*Faculty of Science  
Yamagata University  
Japan*

Takeo Horiguchi  
*Graduate School of  
Science  
Hokkaido University  
Japan*

Christos Katsaros  
*Faculty of Biology  
University of Athens  
Greece*

Hiroshi Kawai  
*Kobe University  
Research Center for  
Inland Seas  
Kobe University  
Japan*

Gwang Hoon Kim  
*Department of Biology  
Kongju National University  
Korea*

John W. La Claire II  
*School of Biological  
Sciences  
University of Texas at  
Austin  
USA*

Akio Murakami  
*Kobe University  
Research Center for  
Inland Seas  
Kobe University  
Japan*

Ki Wan Nam  
*Department of Marine  
Biology  
Pukyong National  
University  
Korea*

Hisayoshi Nozaki  
*Graduate School of  
Science  
University of Tokyo  
Japan*

Kazuo Okuda  
*Faculty of Science  
Kochi University  
Japan*

John A. West  
*School of Botany  
University of Melbourne  
Australia*

Giuseppe C. Zuccarello  
*School of Biological  
Science  
University of New  
South Wales  
Australia*

## EDITORIAL ADVISORY BOARD

Yuji Fujita *Nagasaki, Japan*  
Terumitsu Hori *Tsukuba, Japan*  
Ichiro Imai *Kyoto, Japan*  
Hironao Kataoka *Sendai, Japan*

Dieter G. Müller *Konstanz, Germany*  
Masao Ohno *Kochi, Japan*  
Megumi Okazaki *Tokyo, Japan*  
Robert Sheath *Guelph, Canada*

Makoto M. Watanabe *Tsukuba, Japan*  
Yasutsugu Yokohama *Shizugawa, Japan*  
Isao Inouye *Tsukuba, Japan*

**AIMS AND SCOPE** *Phycological Research* is published by the Japanese Society of Phycology and complements the *Japanese Journal of Phycology*. The journal publishes international, peer-reviewed research dealing with all aspects of phycology to facilitate the international exchange of results. All articles are peer-reviewed by at least two researchers expert in the field of the submitted paper. *Phycological Research* has been credited by the International Association for Plant Taxonomy for the purpose of registration of new non-vascular plant names (including fossils). For further information see <http://bgbm3.bgbm.fu-berlin.de/iapt/registration/journals/htm>. Publication of *Phycological Research* has been supported by a Grant-in-Aid for Publication of Scientific Results from the Ministry of Education, Science and Culture, Japan.

**ABSTRACTING AND INDEXING SERVICES** The journal is indexed by BIOSIS Database, Cambridge Scientific Abstracts, Chemical Abstracts Service, Ecological Abstracts, EMBASE/Excerpta Medica, GEOBASE, UnCover, University Microfilms and Zoological Record.

**EDITORIAL CORRESPONDENCE** All material for publication should be sent to the Editor-in-Chief, Taizo Motomura, Muroran Marine Stations, Field Science Centre for Northern Biosphere, Hokkaido University, Muroran 051-0003, Japan (fax: (+81) 143 22 4135; email: [motomura@bio.sci.hokudai.ac.jp](mailto:motomura@bio.sci.hokudai.ac.jp)). For details instructions concerning the submission of manuscripts, please refer to the Instructions to Authors at the back of a recent issue of the journal or visit the journal web page.

**THE JAPANESE SOCIETY OF PHYCOLOGY** We invite anyone who is interested in any aspect of phycology to become a member of the Society. As a member you will receive *Phycological Research* and the *Japanese Journal of Phycology* free of charge. The annual membership fee for individuals ¥8000. (Members who reside outside Japan will receive only the English language journal *Phycological Research* and the annual membership fee is ¥7000 (standard), ¥5000 (student).)

Those who wish to join the Society should send the application form (at the back of each issue of the journal), together with payment, to the Membership Secretary: Dr Koji Iwamoto, at the address given on the form. Members who wish to claim for missing or damaged issues should contact the Membership Secretary.

**Production Editor:** Deborah Wyatt  
(email: [deborah.wyatt@blackwellpublishingasia.com](mailto:deborah.wyatt@blackwellpublishingasia.com))

**Visit the journal website at:** [www.blackwell-science.com/pre](http://www.blackwell-science.com/pre)

## BUSINESS CORRESPONDENCE AND ADVERTISEMENT BOOKING

All matters relating to orders, subscriptions, back issues, offprints, advertisement bookings and general enquiries should be addressed to: Blackwell Publishing Asia Pty Ltd, PO Box 378, Carlton South, Victoria 3053, Australia (tel: (+61) 3 9349 0300; fax: (+61) 3 9347 5001; email: [info@blackwellpublishingasia.com](mailto:info@blackwellpublishingasia.com); URL: [www.blackwell-science.com/pre](http://www.blackwell-science.com/pre)).

Blackwell Science Asia's Tokyo Office has Japanese speakers available to answer queries on tel: 03 5802 6781; fax: 03 5802 6782. (For international calls, the country code for Japan is 81.)

**SUBSCRIPTION RATES** The journal is published four times per year and the prices for 2002 are as follows: *Institution*: Aus\$604 (Australia); Aus\$549 (New Zealand); ¥40 900 (Japan); US\$335 (rest of world). *Personal*: Aus\$243 (Australia); Aus\$221 (New Zealand); US\$135 (rest of world). For online subscription prices please contact [subs@blackwellpublishingasia.com](mailto:subs@blackwellpublishingasia.com). The journal is despatched to subscribers by surface air-lifted delivery.

**COPYRIGHT AND PHOTOCOPYING** © 2002 Japanese Society of Phycology. Authorization to photocopy items for internal or personal use, or the internal or personal use of specific clients, is granted by Blackwell Publishing Asia Pty Ltd for libraries and other users registered with the Copyright Clearance Center (CCC) Transactional Reporting Service provided that the base fee of US\$15 per copy is paid directly to: CCC, 222 Rosewood Drive, Danvers, MA 01923, USA. This consent does not extend to other kinds of copying, such as copying for general distribution, for advertising or promotional purposes, for creating new collective works or for resale. Special requests should be addressed to the publisher. ISSN: 1322-0829/2001. US\$15.

**DISCLAIMER** The Publisher, the Society and the Editors cannot be held responsible for errors or any consequences arising from the use of information contained in this journal; the views and opinions expressed do not necessarily reflect those of the Publisher, the Society or the Editors, neither does the publication of advertisements constitute any endorsement by the Publisher, the Society or the Editors of the products advertised.

*This journal is printed on acid-free paper.*

**Cover** The Pinguiphyceae *classis nova*, a new class of photosynthetic stramenopiles.

# The Japanese Society of Phycology

Officers for 2001-2002

President: Yoshiaki Hara, Faculty of Science, Yamagata University, Yamagata 990-8560, Japan

Secretary: Tasuku Hishinuma, Faculty of Science, Yamagata University, Yamagata 990-8560, Japan

Membership secretary: Ichiro Mine, Faculty of Science, Kochi University, Kochi 780-8520, Japan

Treasurer: Naoto Hanzawa, Faculty of Science, Yamagata University, Yamagata 990-8560, Japan

Members of Executive Council 2001-2002

Tetsuro Ajisaka *Kyoto University*

Hideomi Amano *Mie University*

Terumitsu Hori *University of Tsukuba*

Takeo Horiguchi *Hokkaido University*

Daisuke Fujita *Toyama Prefectural Fisheries Research Institute*

Hiroshi Kawai *Kobe University*

Masahiko Idei *Bunkyo University Women's College*

Masafumi Iima *Nagasaki University*

Taku Misonou *Yamanashi University*

Taizo Motomura *Hokkaido University*

Tamotsu Nagumo *The Nippon Dental University*

Tadahide Noro *Kagoshima University*

Masao Ohno *Kochi University*

Munekatsu Saitoh *Morioka Junior College*

Jiro Tanaka *Tokyo University of Fisheries*

Toshinobu Terawaki *National Research Institute of Fisheries and Environment of Inland Sea*

Yasutsugu Yokohama *Shizugawa Nature Center*

Makoto M. Watanabe *National Institute for Environmental Studies*

## JOIN THE JAPANESE SOCIETY OF PHYCOLOGY AND RECEIVE FOUR ISSUES OF *PHYCOLOGICAL RESEARCH* PER YEAR FREE OF CHARGE

The Japanese Society of Phycology, founded in 1952, currently has 760 members (including 105 overseas members). The Society is open to anyone who is interested in pure or applied aspects of phycology.

### Application for membership

(Please type or write in block letters)

Membership starts from 2002

Name in full: \_\_\_\_\_  
(Family name) (Given name and initials)

Mailing address: \_\_\_\_\_

\_\_\_\_\_  
(Postal code) (Country)

Telephone: \_\_\_\_\_ Fax: \_\_\_\_\_

E-mail: \_\_\_\_\_ Interests: \_\_\_\_\_

Signature: \_\_\_\_\_ Date: \_\_\_\_\_

**The annual fee for individual members is ¥8000**

**(¥7000 for members who reside outside Japan, ¥5000 for students who submit a verifying statement signed by their Chairperson or Head of Department)**

Payment by: ☐ Visa ☐ MasterCard ☐ American Express

Card number: \_\_\_\_\_ - \_\_\_\_\_ - \_\_\_\_\_ - \_\_\_\_\_ Expiry date: \_\_\_\_\_

Signature: \_\_\_\_\_

☐ International giro postal transfer (Postal Account No.: 01320-4-48748)

☐ International postal money order

Send application form to: Dr Ichiro Mine  
Faculty of Science  
Kochi University  
2-5-1 Akebono-cho,  
Kochi 780-8520, Japan  
Fax: +81 88 844 8356; email: jsphycol@anet.ne.jp

# Phycological Research

---

Volume 50 • Issue 1 • March 2002

---

- Edison José de Paula, Ricardo Toledo Lima Pereira and Masao Ohno  
*Growth rate of the carrageenophyte Kappaphycus alvarezii (Rhodophyta, Gigartinales) introduced in subtropical waters of São Paulo State, Brazil* 1
- Satoru Fukuda, Shuuji Ootsuka, Yukihiro Kitade, Toshiki Watanabe and Naotsune Saga  
*Isolation, characterization and expression of a cDNA encoding an elongation factor-1 $\alpha$  from Porphyra yezoensis (Bangiales, Rhodophyta)* 11
- D. Wilson Freshwater, David T. Thomas and J. Craig Bailey  
*Research note: Characterization of a cDNA encoding glutamine synthetase II from Gelidium crinale (Rhodophyta)* 17
- Elena Bañares, María Altamirano, Félix L. Figueroa and Antonio Flores-Moya  
*Influence of UV radiation on growth of sporelings of three non-geniculate coralline red algae from Southern Iberian Peninsula* 23
- Masanobu Kawachi, Isao Inouye, Daiske Honda, Charles J. O'Kelly, J. Craig Bailey, Robert R. Bidigare and Robert A. Andersen  
*The Pinguiphyceae classis nova, a new class of photosynthetic stramenopiles whose members produce large amounts of omega-3 fatty acids* 31
- Masanobu Kawachi, Mika Atsumi, Hisato Ikemoto and Shigetoh Miyachi  
*Pinguiochrysis pyriformis gen. et sp. nov. (Pinguiphyceae), a new picoplanktonic alga isolated from the Pacific Ocean* 49
- Robert A. Andersen, Daniel Potter and J. Craig Bailey  
*Pinguicoccus pyrenoidosus gen. et sp. nov. (Pinguiphyceae), a new marine coccoid alga* 57
- Charles J. O'Kelly  
*Glossomastix chrysoplata n. gen., n. sp. (Pinguiphyceae), a new coccoidal, colony-forming golden alga from southern Australia* 67
- Daiske Honda and Isao Inouye  
*Ultrastructure and taxonomy of a marine photosynthetic stramenopile Phaeomonas parva gen. et sp. nov. (Pinguiphyceae) with emphasis on the flagellar apparatus architecture* 75
- Masanobu Kawachi, Mary-Hélène Noël and Robert A. Andersen  
*Re-examination of the marine 'chrysophyte' Polypodochrysis teissieri (Pinguiphyceae)* 91
- 



**Blackwell  
Publishing**



1322-0829(200203)50:1;1-/