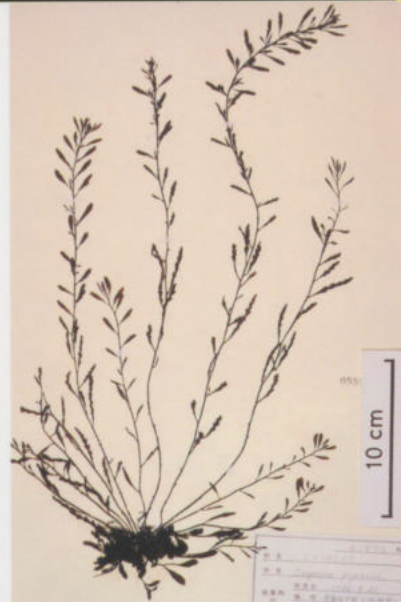


# Phycological Research

Volume 51 • Issue 1 • March 2003

ISSN 1322-0829



**Blackwell  
Publishing**

**The Japanese  
Society of  
Phycology**



# Phycological Research

## EDITOR-IN-CHIEF

Kazuo Okuda

Kochi University, Kochi, Japan

## ASSOCIATE EDITORS

Antonio Flores-Moya  
Faculty of Science  
University of Málaga  
Spain

Daisuke Fujita  
Department of Agricultural,  
Forestry and Fisheries  
Toyama Prefectural  
Government  
Japan

Gert Hansen  
Botanical Institute  
University of  
Copenhagen  
Denmark

Ken-ichiro Ishida  
Faculty of Science  
Kanazawa University  
Japan

Ulf Karsten  
Institute of Aquatic  
Ecology - Applied  
Ecology - University  
of Rostock  
Germany

Christos Katsaros  
Faculty of Biology  
University of Athens  
Greece

Jeong Ha Kim  
Department of Biological  
Sciences  
Sungkyunkwan  
University  
Korea

Gwang Hoon Kim  
Department of Biology  
Kongju National  
University  
Korea

Kazuhiro Kogame  
Graduate School of  
Science  
Hokkaido University  
Japan

John W. La Claire II  
Section of Molecular Cell  
and Developmental  
Biology  
University of Texas at  
Austin USA

Ichiro Mine  
Faculty of Science  
Kochi University  
Japan

Taizo Motomura  
Field Science Center for  
Northern Biosphere  
Hokkaido University  
Japan

Orlando Necchi Jr.  
Zoology and Botany  
Department  
São Paulo State University  
Brazil

Hisayoshi Nozaki  
Graduate School of  
Science  
University of Tokyo  
Japan

John West  
School of Botany  
University of Melbourne  
Australia

Giuseppe C. Zuccarello  
National Herbarium  
Netherlands  
University of Leiden  
The Netherlands

## EDITORIAL ADVISORY BOARD

Yuji Fujita Nagasaki, Japan

Terumitsu Hori Tsukuba, Japan

Takeo Horiguchi Hokkaido, Japan

Ichiro Imai Kyoto, Japan

Hironao Kataoka Sendai, Japan

Hiroshi Kawai Kobe, Japan

Dieter G. Müller Konstanz, Germany

Masao Ohno Kochi, Japan

Megumi Okazaki Tokyo, Japan

Robert Sheath Guelph, Canada

Makoto M. Watanabe Tsukuba, Japan

Yasutsugu Yokohama Shizuoka, Japan

Isao Inouye Tsukuba, Japan

## PRODUCTION EDITOR

Rose Williams

rose.williams@blackwellpublishingasia.com

This journal is also published online at [www.blackwell-synergy.com](http://www.blackwell-synergy.com)

**AIMS AND SCOPE** *Phycological Research* is published by the Japanese Society of Phycology and complements the *Japanese Journal of Phycology*. The journal publishes international, peer-reviewed research dealing with all aspects of phycology to facilitate the international exchange of results. All articles are peer-reviewed by at least two researchers expert in the field of the submitted paper. *Phycological Research* has been credited by the International Association for Plant Taxonomy for the purpose of registration of new non-vascular plant names (including fossils). For further information see <http://bgbm3.bgbm.fu-berlin.de/iapt/registration/journals/htm>.

**ABSTRACTING AND INDEXING SERVICES** The journal is indexed by BIOSIS Database, Cambridge Scientific Abstracts, Chemical Abstracts Service, Ecological Abstracts, EMBASE/Excerpta Medica, GEOBASE, UnCover, University Microfilms and Zoological Record.

**THE JAPANESE SOCIETY OF PHYCOLOGY** We invite anyone who is interested in any aspect of phycology to become a member of the Society. As a member you will receive *Phycological Research* and the *Japanese Journal of Phycology* free of charge. The annual membership fee for individuals ¥8000. (Members who reside outside Japan will receive only the English language journal *Phycological Research* and the annual membership fee is ¥7000 (standard), ¥5000 (student).)

Those who wish to join the Society should send the application form (at the back of each issue of the journal), together with payment, to the Membership Secretary: Dr Koji Iwamoto, at the address given on the form. Members who wish to claim for missing or damaged issues should contact the Membership Secretary.

**ADDRESS FOR EDITORIAL CORRESPONDENCE** Kazuo Okuda, Department of Natural Environmental Science, Faculty of Science, Kochi University, Kochi 780-8520, Japan (email [okuda@cc.kochi-u.ac.jp](mailto:okuda@cc.kochi-u.ac.jp)).

**DISCLAIMER** The Publisher, Society and Editors cannot be held responsible for errors or any consequences arising from the use of information contained in this journal; the views and opinions expressed do not necessarily reflect those of the Publisher, Society and Editors, neither does the publication of advertisements constitute any endorsement by the Publisher, Society and Editors of the products advertised.

*This journal is printed on acid-free paper.*

© 2003 Japanese Society of Phycology.

Publication of *Phycological Research* has been supported by a Grant-in-Aid for Publication of Scientific Research Results from the Japan Society for the Promotion of Science.

**Cover** A part of SAP herbarium collections of *Sargassum* spp. (Fuciales, Phaeophyceae). Top row, from the left: *Sargassum fulvellum*, *S. thunbergii*, *S. yezoense*, *S. siliquastrum*. Bottom row, from the left: *S. giganteifolium*, *S. hemiphyllum*, *S. nigrifolium*, *S. piluliferum*. See Stiger *et al.* in this issue.

For submission instructions, subscription and all other information visit  
[www.blackwellpublishing.com/journals/pre](http://www.blackwellpublishing.com/journals/pre)



# The Japanese Society of Phycology

Officers for 2003–2004

President: Yoshiaki Hara, Faculty of Science, Yamagata University, Yamagata 990-8560, Japan

Secretary: Tasuku Hishinuma, Faculty of Science, Yamagata University, Yamagata 990-8560, Japan

Membership secretary: Ichiro Mine, Faculty of Science, Kochi University, Kochi 780-8520, Japan

Treasurer: Akiko Yokoyama, Faculty of Science, Yamagata University, Yamagata 990-8560, Japan.

Members of Executive Council 2003–2004

Hideomi Amano *Mie University*  
Daisuke Fujita *Toyama Prefectural Government*  
Yuji Fujita *Nagasaki University*  
Ichiro Imai *Kyoto University*  
Isao Inoue *University of Tsukuba*  
Hironao Kataoka *Tohoku University*  
Shigeo Kawaguchi *Kyushu University*  
Miyuki Maegawa *Mie University*  
Shigeki Mayama *Tokyo Gakugei University*  
Taizo Motomura *Hokkaido University*

Hiroyuki Nakahara *Kyoto University*  
Kazuo Okuda *Kochi University*  
Naotsune Saga *Hokkaido University*  
Jiro Tanaka *Tokyo University of Fisheries*  
Toshinobu Terawaki *National Research Institute of Fisheries and Environment of Inland Sea*  
Yasutsugu Yokohama *Shizugawa Nature Center*  
Makoto Yoshizaki *Toho University*  
Makoto M. Watanabe *National Institute for Environmental Studies*

## JOIN THE JAPANESE SOCIETY OF PHYCOLOGY AND RECEIVE FOUR ISSUES OF *PHYCOLOGICAL RESEARCH* PER YEAR FREE OF CHARGE

The Japanese Society of Phycology, founded in 1952, currently has 760 members (including 105 overseas members). The Society is open to anyone who is interested in pure or applied aspects of phycology.

### Application for membership

(Please type or write in block letters)

Membership starts from 2003

Name in full: \_\_\_\_\_  
(Family name) (Given name and initials)

Mailing address: \_\_\_\_\_

\_\_\_\_\_  
(Postal code) (Country)

Telephone: \_\_\_\_\_ Fax: \_\_\_\_\_

E-mail: \_\_\_\_\_ Interests: \_\_\_\_\_

Signature: \_\_\_\_\_ Date: \_\_\_\_\_

**The annual fee for individual members is ¥8000**

**(¥7000 for members who reside outside Japan, ¥5000 for students who submit a verifying statement signed by their Chairperson or Head of Department)**

Payment by: ☐ Visa ☐ MasterCard ☐ American Express

Card number: \_\_\_\_\_ - \_\_\_\_\_ - \_\_\_\_\_ - \_\_\_\_\_ Expiry date: \_\_\_\_\_

Signature: \_\_\_\_\_

☐ International giro postal transfer (Postal Account No.: 01320-4-48748)

☐ International postal money order

Send application form to: Dr Ichiro Mine  
Faculty of Science  
Kochi University  
2-5-1 Akebono-cho,  
Kochi 780-8520, Japan  
Fax: +81 88 844 8356; email: jsphycol@anet.ne.jp

# Phycological Research

---

Volume 51 • Issue 1 • March 2003

---

Valérie Stiger, Takeo Horiguchi, Tadao Yoshida, Annette W. Coleman and Michio Masuda <i>Phylogenetic relationships within the genus Sargassum (Fucales, Phaeophyceae), inferred from ITS-2 nrDNA, with an emphasis on the taxonomic subdivision of the genus</i>	1
Frank Poppe, Ralf A. M. Schmidt, Dieter Hanelt and Christian Wiencke <i>Effects of UV radiation on the ultrastructure of several red algae</i>	11
Aki Kato and Michio Masuda <i>A new crustose red alga Peyssonnelia rumoiana (Rhodophyta, Gigartinales) from Japan</i>	21
Masanori Hiraoka, Satoshi Shimada, Masao Ohno and Yukihiro Serisawa <i>Asexual life history by quadriflagellate swimmers of Ulva spinulosa (Ulvales, Ulvophyceae)</i>	29
Arthur Schüßler, Susanne Hirn and Christos Katsaros <i>Cellulose synthesizing terminal complexes and morphogenesis in tip-growing cells of Syringoderma phinneyi (Phaeophyceae)</i>	35
Juan E. Macchiavello A., Cristian R. Bulboa C. and Mario Edding V. <i>Vegetative propagation and spore-based recruitment in the carrageenophyte Chondracanthus chamissoi (Gigartinales, Rhodophyta) in northern Chile</i>	45
Jair Vieira Jr and Orlando Necchi Jr <i>Photosynthetic characteristics of charophytes from tropical lotic ecosystems</i>	51
Takeo Horiguchi and Mona Hoppenrath <i>Haramonas viridis sp. nov. (Raphidophyceae, Heterokontophyta), a new sand-dwelling raphidophyte from cold temperate waters</i>	61
Corrigendum	69



**Blackwell**  
Publishing