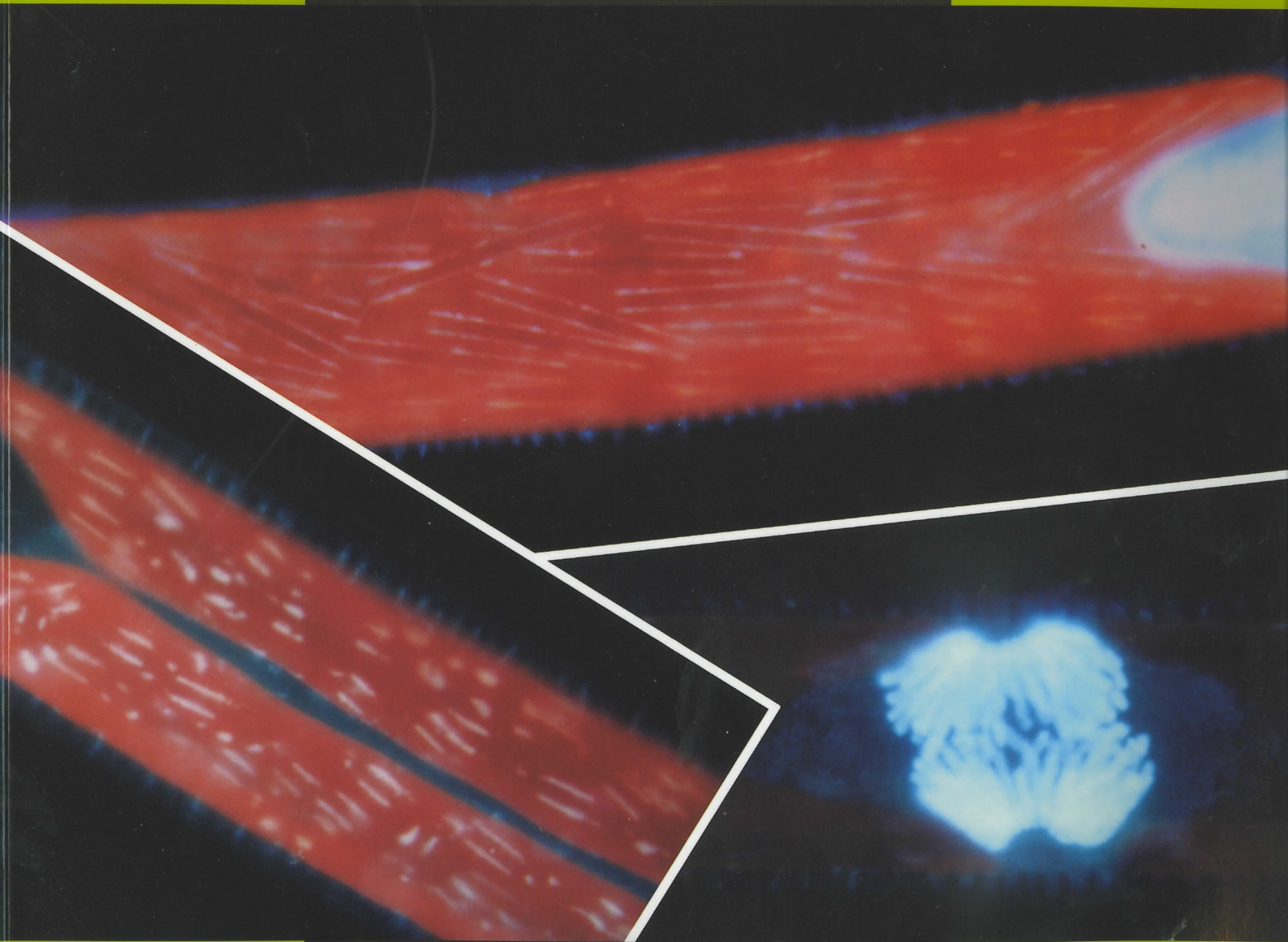


# Phycological Research

.....  
Volume 52 • Issue 2 • June 2004  
.....

ISSN 1322-0829  
.....



**Blackwell**  
Publishing

**The Japanese  
Society of  
Phycology**



# Phycological Research

## EDITOR-IN-CHIEF

Kazuo Okuda

Kochi University, Kochi, Japan

## ASSOCIATE EDITORS

Antonio Flores-Moya  
Faculty of Science  
University of Málaga  
Spain

Daisuke Fujita  
Department of Marine  
Biosciences  
Tokyo University of  
Marine Science and  
Technology  
Japan

Gert Hansen  
Botanical Institute  
University of  
Copenhagen  
Denmark

Ken-ichiro Ishida  
Faculty of Science  
Kanazawa University  
Japan

Ulf Karsten  
Institute of Aquatic  
Ecology - Applied  
Ecology - University  
of Rostock  
Germany

Christos Katsaros  
Faculty of Biology  
University of Athens  
Greece

Jeong Ha Kim  
Department of Biological  
Sciences  
Sungkyunkwan  
University  
Korea

Gwang Hoon Kim  
Department of Biology  
Kongju National  
University  
Korea

Kazuhiro Kogame  
Graduate School of  
Science  
Hokkaido University  
Japan

John W. La Claire II  
Section of Molecular Cell  
and Developmental  
Biology  
University of Texas at  
Austin USA

Ichiro Mine  
Faculty of Science  
Kochi University  
Japan

Taizo Motomura  
Field Science Center for  
Northern Biosphere  
Hokkaido University  
Japan

Orlando Necchi Jr  
Zoology and Botany  
Department  
São Paulo State University  
Brazil

Hisayoshi Nozaki  
Graduate School of  
Science  
University of Tokyo  
Japan

John West  
School of Botany  
University of Melbourne  
Australia

Giuseppe C. Zuccarello  
National Herbarium  
Netherlands  
University of Leiden  
The Netherlands

## EDITORIAL ADVISORY BOARD

Yuji Fujita Nagasaki, Japan

Terumitsu Hori Tsukuba, Japan

Takeo Horiguchi Hokkaido, Japan

Ichiro Imai Kyoto, Japan

Hironao Kataoka Sendai, Japan

Hiroshi Kawai Kobe, Japan

Dieter G. Müller Konstanz, Germany

Masao Ohno Kochi, Japan

Megumi Okazaki Tokyo, Japan

Robert Sheath Guelph, Canada

Makoto M. Watanabe Tsukuba, Japan

Yasutsugu Yokohama Shizuoka, Japan

Isao Inouye Tsukuba, Japan

## PRODUCTION EDITOR

Rose Williams

rose.williams@blackwellpublishingasia.com

This journal is also published online at [www.blackwell-synergy.com](http://www.blackwell-synergy.com)

**AIMS AND SCOPE** *Phycological Research* is published by the Japanese Society of Phycology and complements the *Japanese Journal of Phycology*. The Journal publishes international, peer-reviewed research dealing with all aspects of phycology to facilitate the international exchange of results. All articles are peer-reviewed by at least two researchers expert in the field of the submitted paper. *Phycological Research* has been credited by the International Association for Plant Taxonomy for the purpose of registration of new non-vascular plant names (including fossils). For further information see <http://bgbm3.bgbm.fu-berlin.de/iapt/registration/journals/htm>.

**PUBLICATION FREQUENCY** Four issues per year.

**ABSTRACTING AND INDEXING SERVICES** The journal is indexed by BIOSIS Database, Cambridge Scientific Abstracts, Chemical Abstracts Service, Ecological Abstracts, EMBASE/Excerpta Medica, GEOBASE, UnCover, University Microfilms and Zoological Record.

**THE JAPANESE SOCIETY OF PHYCOLOGY** We invite anyone who is interested in any aspect of phycology to become a member of the Society. As a member you will receive *Phycological Research* and the *Japanese Journal of Phycology* free of charge. The annual membership fee for individuals ¥8000. (Members who reside outside Japan will receive only the English language journal *Phycological Research* and the annual membership fee is ¥7000 (standard), ¥5000 (student).)

Those who wish to join the Society should send the application form (at the back of each issue of the Journal), together with payment, to the Membership Secretary, Dr Ichiro Mine, at the address given on the form. Members who wish to claim for missing or damaged issues should contact the Membership Secretary.

**ADDRESS FOR EDITORIAL CORRESPONDENCE** Kazuo Okuda, Department of Natural Environmental Science, Faculty of Science, Kochi University, Kochi 780-8520, Japan (email [okuda@cc.kochi-u.ac.jp](mailto:okuda@cc.kochi-u.ac.jp)).

**DISCLAIMER** The Publisher, Society and Editors cannot be held responsible for errors or any consequences arising from the use of information contained in this journal; the views and opinions expressed do not necessarily reflect those of the Publisher, Society and Editors, neither does the publication of advertisements constitute any endorsement by the Publisher, Society and Editors of the products advertised.

*This journal is printed on acid-free paper.*

© 2004 Japanese Society of Phycology.

**Cover** Epifluorescence microscopy of DAPI-stained cells of *Nitzschia sigmaidea*. Many pairs of DNA-containing lines scattered throughout chloroplast are long in interphase but become short accompanied by chloroplast division, which synchronously occurs with mitosis.

For submission instructions, subscription and all other information visit  
[www.blackwellpublishing.com/pre](http://www.blackwellpublishing.com/pre)

ISSN 1322-0829 (Print) ISSN 1440-183 (Online)

# The Japanese Society of Phycology

Officers for 2003–2004

President: Yoshiaki Hara, Faculty of Science, Yamagata University, Yamagata 990-8560, Japan  
Secretary: Tasuku Hishinuma, Faculty of Science, Yamagata University, Yamagata 990-8560, Japan  
Public Relations Secretary: Satoshi Shimada, Center for Advanced Science and Technology, Kokkaido University, Sapporo 060-0810, Japan

Membership secretary: Ichiro Mine, Faculty of Science, Kochi University, Kochi 780-8520, Japan  
Secretary for International Affairs: Ken-ichiro Ishida, Faculty of Science, Kanazawa University, Kanazawa 920-1192, Japan  
Treasurer: Akiko Yokoyama, Faculty of Science, Yamagata University, Yamagata 990-8560, Japan.

Members of Executive Council 2003–2004

Hideomi Amano *Mie University*  
Yuji Fujita *Nagasaki University*  
Ichiro Imai *Kyoto University*  
Isao Inoue *University of Tsukuba*  
Hironao Kataoka *Tohoku University*  
Shigeo Kawaguchi *Kyushu University*  
Miyuki Maegawa *Mie University*  
Shigeki Mayama *Tokyo Gakugei University*  
Taku Misonou *Yamanashi University*  
Taizo Motomura *Hokkaido University*

Hiroyuki Nakahara *Kyoto University*  
Kazuo Okuda *Kochi University*  
Naotsune Saga *Hokkaido University*  
Jiro Tanaka *Tokyo University of Fisheries*  
Toshinobu Terawaki *National Research Institute of Fisheries and Environment of Inland Sea*  
Yasutsugu Yokohama *Shizugawa Nature Center*  
Makoto Yoshizaki *Toho University*  
Makoto M. Watanabe *National Institute for Environmental Studies*

## JOIN THE JAPANESE SOCIETY OF PHYCOLOGY AND RECEIVE FOUR ISSUES OF *PHYCOLOGICAL RESEARCH* PER YEAR FREE OF CHARGE

The Japanese Society of Phycology, founded in 1952, currently has 760 members (including 105 overseas members). The Society is open to anyone who is interested in pure or applied aspects of phycology.

### Application for membership

(Please type or write in block letters)

Membership starts from 2004

Name in full: \_\_\_\_\_  
(Family name) (Given name and initials)

Mailing address: \_\_\_\_\_

\_\_\_\_\_  
(Postal code) (Country)

Telephone: \_\_\_\_\_ Fax: \_\_\_\_\_

E-mail: \_\_\_\_\_ Interests: \_\_\_\_\_

Signature: \_\_\_\_\_ Date: \_\_\_\_\_

**The annual fee for individual members is ¥8000**

**(¥7000 for members who reside outside Japan, ¥5000 for students who submit a verifying statement signed by their Chairperson or Head of Department)**

Payment by: ☐ Visa ☐ MasterCard ☐ American Express

Card number: \_\_\_\_\_ - \_\_\_\_\_ - \_\_\_\_\_ Expiry date: \_\_\_\_\_

Signature: \_\_\_\_\_

☐ International giro postal transfer (Postal Account No.: 01320-4-48748)

☐ International postal money order

Send application form to: Dr Ichiro Mine  
Faculty of Science  
Kochi University  
2-5-1 Akebono-cho,  
Kochi 780-8520, Japan  
Fax: +81 88 844 8356; email: jsphycol@anet.ne.jp



# Phycological Research

---

Volume 52 • Issue 2 • June 2004

---

Alexis M. Bellorin, Mariana C. Oliveira and Eurico C. Oliveira <i>Gracilaria vermiculophylla</i> : A western Pacific species of Gracilariaceae (Rhodophyta) first recorded from the eastern Pacific	69
Catriona L. Hurd, Wendy A. Nelson, Ruth Falshaw and Kate F. Neill <i>Review article: History, current status and future of marine macroalgal research in New Zealand: Taxonomy, ecology, physiology and human uses</i>	80
Yoshihito Takano and Takeo Horiguchi <i>Surface ultrastructure and molecular phylogenetics of four unarmored heterotrophic dinoflagellates, including the type species of the genus Gyrodinium (Dinophyceae)</i>	107
Alan J. K. Millar <i>New records of marine benthic algae from New South Wales, eastern Australia</i>	117
Shigeki Mayama, Nagisa Mayama and Ikuko Shihira-Ishikawa <i>Characterization of linear-oblong pyrenoids with cp-DNA along their sides in Nitzschia sigmoidea (Bacillariophyceae)</i>	129
Orlando Necchi Jnr <i>Photosynthetic responses to temperature in tropical lotic macroalgae</i>	140
Marina Selina and Mona Hoppenrath <i>Morphology of Sinophysis minima sp. nov. and three Sinophysis species (Dinophyceae, Dinophysiales) from the Sea of Japan</i>	149
Yoshiyasu Kanetsuna <i>New and interesting desmids (Zygnematales, Chlorophyceae) collected from Brazil and Argentina</i>	160
Laura B. Ruiz, Iara Rocchetta, Verónica dos Santos Ferreira and Visitación Conforti <i>Isolation, culture and characterization of a new strain of Euglena gracilis</i>	168
Yukihiko Serisawa, Yasutsugu Yokohama, Yusho Aruga and Jiro Tanaka <i>Dark respiration of the stipe of Ecklonia cava (Laminariales, Phaeophyta) in relation to temperature</i>	174
Kyosuke Niwa, Norio Kikuchi, Mitsunobu Iwabuchi and Yusho Aruga <i>Morphological and AFLP variation of Porphyra yezoensis Ueda form. narawaensis Miura (Bangiales, Rhodophyta)</i>	180
Corrigendum	191

---