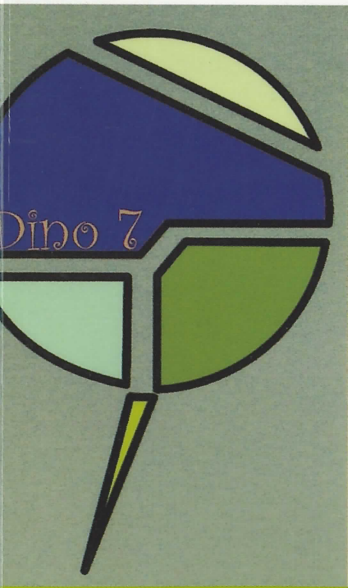
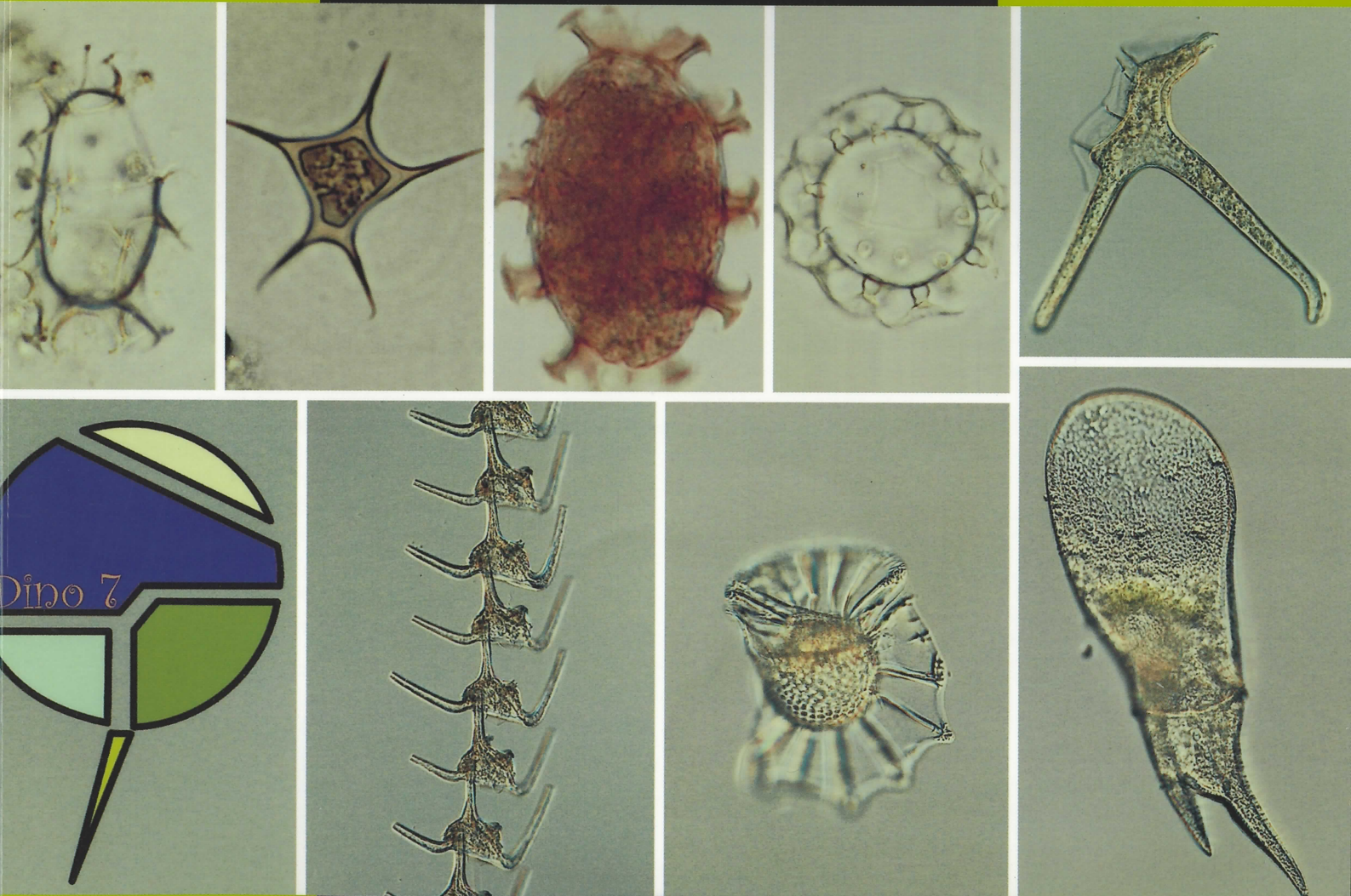


Phycological Research

Volume 52 • Issue 4 • December 2004

ISSN 1322-0829



**Blackwell
Publishing**

**The Japanese
Society of
Phycology**

Phycological Research

EDITOR-IN-CHIEF

Kazuo Okuda

Graduate School of Kuroshio Science, Kochi University, Kochi, Japan

ASSOCIATE EDITORS

Antonio Flores-Moya
Faculty of Science
University of Málaga
Spain

Daisuke Fujita
Department of Marine
Biosciences
Tokyo University of
Marine Science and
Technology
Japan

Gert Hansen
Botanical Institute
University of
Copenhagen
Denmark

Ken-ichiro Ishida
Faculty of Science
Kanazawa University
Japan

Ulf Karsten
Institute of Aquatic
Ecology - Applied
Ecology - University
of Rostock
Germany

Christos Katsaros
Faculty of Biology
University of Athens
Greece

Jeong Ha Kim
Department of Biological
Sciences
Sungkyunkwan
University
Korea

Gwang Hoon Kim
Department of Biology
Kongju National
University
Korea

Kazuhiro Kogame
Graduate School of
Science
Hokkaido University
Japan

John W. La Claire II
Section of Molecular Cell
and Developmental
Biology
University of Texas at
Austin USA

Ichiro Mine
Graduate School of
Kuroshio Science
Kochi University
Japan

Taizo Motomura
Field Science Center for
Northern Biosphere
Hokkaido University
Japan

Orlando Necchi Jr
Zoology and Botany
Department
São Paulo State University
Brazil

Hisayoshi Nozaki
Graduate School of
Science
University of Tokyo
Japan

John A. West
School of Botany
University of Melbourne
Australia

Giuseppe C. Zuccarello
School of Biological
Sciences
Victoria University of
Wellington, New Zealand

EDITORIAL ADVISORY BOARD

Yuji Fujita Nagasaki, Japan

Terumitsu Hori Tsukuba, Japan

Takeo Horiguchi Hokkaido, Japan

Ichiro Imai Kyoto, Japan

Hironao Kataoka Sendai, Japan

Hiroshi Kawai Kobe, Japan

Dieter G. Müller Konstanz, Germany

Masao Ohno Kochi, Japan

Megumi Okazaki Tokyo, Japan

Robert Sheath Guelph, Canada

Makoto M. Watanabe Tsukuba, Japan

Yasutsugu Yokohama Shizugawa, Japan

Isao Inouye Tsukuba, Japan

PRODUCTION EDITOR

Rose Williams

rose.williams@blackwellpublishingasia.com

This journal is also published online at www.blackwell-synergy.com

AIMS AND SCOPE *Phycological Research* is published by the Japanese Society of Phycology and complements the *Japanese Journal of Phycology*. The Journal publishes international, peer-reviewed research dealing with all aspects of phycology to facilitate the international exchange of results. All articles are peer-reviewed by at least two researchers expert in the field of the submitted paper. *Phycological Research* has been credited by the International Association for Plant Taxonomy for the purpose of registration of new non-vascular plant names (including fossils). For further information see <http://bgbm3.bgbm.fu-berlin.de/iapt/registration/journals/htm>.

PUBLICATION FREQUENCY Four issues per year.

ABSTRACTING AND INDEXING SERVICES The journal is indexed by BIOSIS Database, Cambridge Scientific Abstracts, Chemical Abstracts Service, Ecological Abstracts, EMBASE/Excerpta Medica, GEOBASE, UnCover, University Microfilms and Zoological Record.

THE JAPANESE SOCIETY OF PHYCOLOGY We invite anyone who is interested in any aspect of phycology to become a member of the Society. As a member you will receive *Phycological Research* and the *Japanese Journal of Phycology* free of charge. The annual membership fee for individuals ¥8000. (Members who reside outside Japan will receive only the English language journal *Phycological Research* and the annual membership fee is ¥7000 (standard), ¥5000 (student).)

Those who wish to join the Society should send the application form (at the back of each issue of the Journal), together with payment, to the Membership Secretary, Dr Ichiro Mine, at the address given on the form. Members who wish to claim for missing or damaged issues should contact the Membership Secretary.

ADDRESS FOR EDITORIAL CORRESPONDENCE Kazuo Okuda, Graduate School of Kuroshio Science, Kochi University, 2-5-1 Akebono-cho, Kochi 780-8520, Japan (email okuda@cc.kochi-u.ac.jp).

DISCLAIMER The Publisher, Society and Editors cannot be held responsible for errors or any consequences arising from the use of information contained in this journal; the views and opinions expressed do not necessarily reflect those of the Publisher, Society and Editors, neither does the publication of advertisements constitute any endorsement by the Publisher, Society and Editors of the products advertised.

This journal is printed on acid-free paper.

© 2004 Japanese Society of Phycology.

Cover Cysts and vegetative cells of various dinoflagellates. Top row (from left to right): *Spiniferites elongatus* (cyst), *Stelladinium stellatum* (cyst), *Polykrikos schwartzii* (cyst), *Tuberculodinium vancampoeae* (cyst) and *Dinophysis miles*. Bottom row (from left to right): Logo of DIN07, *Ceratium vultur*, *Ornithocercus steinii* and *Ceratium praelongum*.

For submission instructions, subscription and all other information visit
www.blackwellpublishing.com/pre

ISSN 1322-0829 (Print) ISSN 1440-183 (Online)

The Japanese Society of Phycology

Officers for 2003–2004

President: Yoshiaki Hara, Faculty of Science, Yamagata University, Yamagata 990-8560, Japan
Secretary: Tasuku Hishinuma, Faculty of Science, Yamagata University, Yamagata 990-8560, Japan
Public Relations Secretary: Satoshi Shimada, Center for Advanced Science and Technology, Kokkaido University, Sapporo 060-0810, Japan

Membership secretary: Ichiro Mine, Faculty of Science, Kochi University, Kochi 780-8520, Japan
Secretary for International Affairs: Ken-ichiro Ishida, Faculty of Science, Kanazawa University, Kanazawa 920-1192, Japan
Treasurer: Akiko Yokoyama, Faculty of Science, Yamagata University, Yamagata 990-8560, Japan.

Members of Executive Council 2003–2004

Hideomi Amano *Mie University*
Yuji Fujita *Nagasaki University*
Ichiro Imai *Kyoto University*
Isao Inoue *University of Tsukuba*
Hironao Kataoka *Tohoku University*
Shigeo Kawaguchi *Kyushu University*
Miyuki Maegawa *Mie University*
Shigeki Mayama *Tokyo Gakugei University*
Taku Misonou *Yamanashi University*
Taizo Motomura *Hokkaido University*

Hiroyuki Nakahara *Kyoto University*
Kazuo Okuda *Kochi University*
Naotsune Saga *Hokkaido University*
Jiro Tanaka *Tokyo University of Fisheries*
Toshinobu Terawaki *National Research Institute of Fisheries and Environment of Inland Sea*
Yasutsugu Yokohama *Shizugawa Nature Center*
Makoto Yoshizaki *Toho University*
Makoto M. Watanabe *National Institute for Environmental Studies*

JOIN THE JAPANESE SOCIETY OF PHYCOLOGY AND RECEIVE FOUR ISSUES OF *PHYCOLOGICAL RESEARCH* PER YEAR FREE OF CHARGE

The Japanese Society of Phycology, founded in 1952, currently has 760 members (including 105 overseas members). The Society is open to anyone who is interested in pure or applied aspects of phycology.

Application for membership

(Please type or write in block letters)

Membership starts from 2004

Name in full: _____
(Family name) (Given name and initials)

Mailing address: _____

(Postal code) (Country)

Telephone: _____ Fax: _____

E-mail: _____ Interests: _____

Signature: _____ Date: _____

The annual fee for individual members is ¥8000

(¥7000 for members who reside outside Japan, ¥5000 for students who submit a verifying statement signed by their Chairperson or Head of Department)

Payment by: ☐ Visa ☐ MasterCard ☐ American Express

Card number: _____ - _____ - _____ Expiry date: _____

Signature: _____

☐ International giro postal transfer (Postal Account No.: 01320-4-48748)

☐ International postal money order

Send application form to: Dr Ichiro Mine
Faculty of Science
Kochi University
2-5-1 Akebono-cho,
Kochi 780-8520, Japan
Fax: +81 88 844 8356; email: jsphycol@anet.ne.jp

Phycological Research

Volume 52 • Issue 4 • December 2004

Preface	307
F. J. R. "Max" Taylor <i>Illumination or confusion? Dinoflagellate molecular phylogenetic data viewed from a primarily morphological standpoint</i>	308
Gerard J. M. Versteegh and Peter Blokker <i>Resistant macromolecules of extant and fossil microalgae</i>	325
M. Consuelo Carbonell-Moore <i>On the taxonomical position of Lessardia Saldarriaga et Taylor within the family Podolampadaceae Lindemann (Dinophyceae)</i>	340
David U. Hernández-Becerril and Rosalba Alonso-Rodríguez <i>Study of the marine planktonic dinoflagellate Ceratium divaricatum (Dinophyceae), a confused and considerably variable species</i>	346
Hiroshi Kawamura <i>Dinoflagellate cyst distribution along a shelf to slope transect of an oligotrophic tropical sea (Sunda Shelf, South China Sea)</i>	355
Rhodora V. Azanza, Fernando P. Siringan, Maria Lourdes San Diego-Mcglone, Aletta T. Yñiguez, Neil H. Macalalad, Peter B. Zamora, Melissa B. Agustin and Kazumi Matsuoka <i>Horizontal dinoflagellate cyst distribution, sediment characteristics and benthic flux in Manila Bay, Philippines</i>	376
Zhaohui Wang, Yuzao Qi, Songhui Lu, Yan Wang and Kazumi Matsuoka <i>Seasonal distribution of dinoflagellate resting cysts in surface sediments from Changjiang River Estuary</i>	387
Zhaohui Wang, Kazumi Matsuoka, Yuzao Qi, Jufang Chen and Songhui Lu <i>Dinoflagellate cyst records in recent sediments from Daya Bay, South China Sea</i>	396
Koichiro Mizushima and Kazumi Matsuoka <i>Vertical distribution and germination ability of Alexandrium spp. cysts (Dinophyceae) in the sediments collected from Kure Bay of the Seto Inland Sea, Japan</i>	408
Alexandra C. Kraberg and David J. S. Montagnes <i>Use of online resources in the taxonomy and ecology of harmful phytoplankton</i>	414
Sergio Licea, María Eugenia Zamudio, Ruth Luna and Jesús Soto <i>Free-living dinoflagellates in the southern Gulf of Mexico: Report of data (1979–2002)</i>	419
Referees	429
Author index	430
Subject index	431
