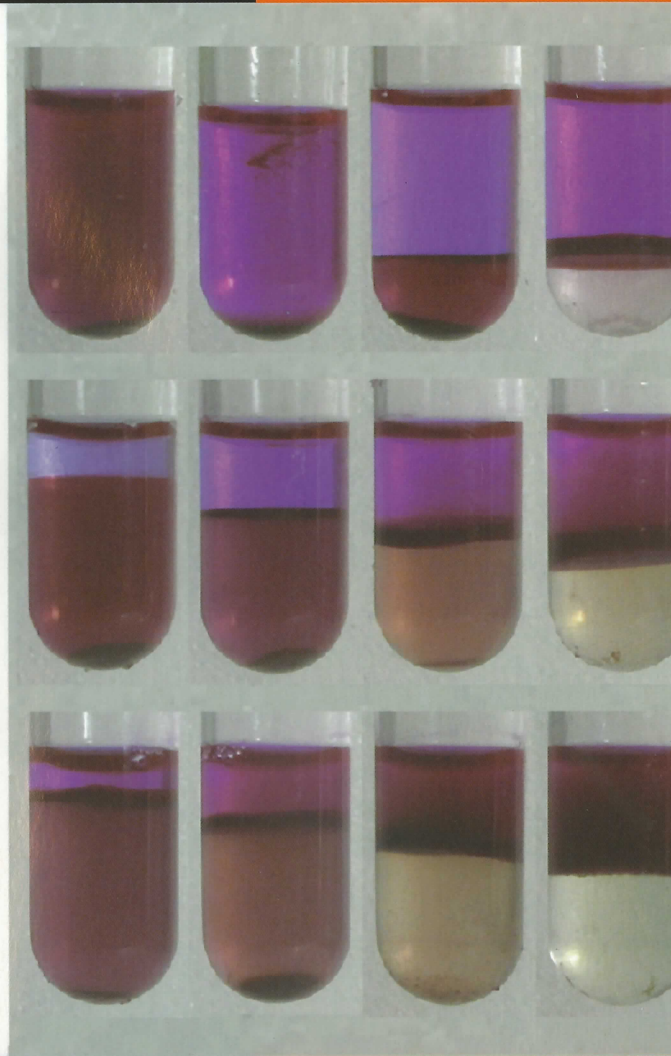


# Phycological Research

Volume 53 • Issue 2 • June 2005

ISSN 1322-0829



**Blackwell  
Publishing**

**The Japanese  
Society of  
Phycology**



# Phycological Research

## EDITOR-IN-CHIEF

Kazuo Okuda

Graduate School of Kuroshio Science, Kochi University, Kochi, Japan

## ASSOCIATE EDITORS

Antonio Flores-Moya  
Faculty of Science  
University of Málaga  
Spain

Daisuke Fujita  
Department of Marine  
Biosciences  
Tokyo University of  
Marine Science and  
Technology  
Japan

Gert Hansen  
Botanical Institute  
University of  
Copenhagen  
Denmark

Ken-ichiro Ishida  
Faculty of Science  
Kanazawa University  
Japan

Ulf Karsten  
Institute of Aquatic  
Ecology - Applied  
Ecology - University of  
Rostock  
Germany

Christos Katsaros  
Faculty of Biology  
University of Athens  
Greece

Jeong Ha Kim  
Department of Biological  
Sciences  
Sungkyunkwan  
University  
Korea

Gwang Hoon Kim  
Department of Biology  
Kongju National  
University  
Korea

Kazuhiro Kogame  
Graduate School of  
Science  
Hokkaido University  
Japan

John W. La Claire II  
Section of Molecular Cell  
and Developmental  
Biology  
University of Texas at  
Austin USA

Ichiro Mine  
Graduate School of  
Kuroshio Science,  
Kochi University  
Japan

Taizo Motomura  
Field Science Center for  
Northern Biosphere  
Hokkaido University  
Japan

Orlando Necchi Jr  
Zoology and Botany  
Department  
São Paulo State  
University  
Brazil

Hisayoshi Nozaki  
Graduate School of  
Science  
University of Tokyo  
Japan

John West  
School of Botany  
University of Melbourne  
Australia

Giuseppe C. Zuccarello  
School of Biological  
Sciences  
Victoria University of  
Wellington  
New Zealand

## EDITORIAL ADVISORY BOARD

Yuji Fujita Nagasaki, Japan

Terumitsu Hori Tsukuba, Japan

Takeo Horiguchi Hokkaido, Japan

Ichiro Imai Kyoto, Japan

Hironao Kataoka Sendai, Japan

Hiroshi Kawai Kobe, Japan

Dieter G. Müller Konstanz, Germany

Masao Ohno Kochi, Japan

Megumi Okazaki Tokyo, Japan

Robert Sheath Guelph, Canada

Makoto M. Watanabe Tsukuba, Japan

Yasutsugu Yokohama Shizuoka, Japan

Isao Inouye Tsukuba, Japan

This journal is available online at Blackwell synergy. Visit <http://www.blackwell-synergy.com> to search the articles and register for table of contents email alerts.

**AIMS AND SCOPE** *Phycological Research* is published by the Japanese Society of Phycology and complements the *Japanese Journal of Phycology*. The Journal publishes international, peer-reviewed research dealing with all aspects of phycology to facilitate the international exchange of results. All articles are peer-reviewed by at least two researchers expert in the field of the submitted paper. *Phycological Research* has been credited by the International Association for Plant Taxonomy for the purpose of registration of new non-vascular plant names (including fossils). For further information see <http://bgbm3.bgbm.fu-berlin.de/iapt/registration/journals/htm>.

**ABSTRACTING AND INDEXING SERVICES** The journal is indexed by BIOSIS Database, Cambridge Scientific Abstracts, Chemical Abstracts Service, Current Contents, Ecological Abstracts, EMBASE/Excerpta Medica, GEOBASE, UnCover, University Microfilms and Zoological Record.

**THE JAPANESE SOCIETY OF PHYCOLOGY** We invite anyone who is interested in any aspect of phycology to become a member of the Society. As a member you will receive *Phycological Research* and the *Japanese Journal of Phycology* free of charge. The annual membership fee for individuals ¥8000. (Members who reside outside Japan will receive only the English language journal *Phycological Research* and the annual membership fee is ¥7000 (standard), ¥5000 (student).)

Those who wish to join the Society should send the application form (at the back of each issue of the Journal), together with payment, to the Membership Secretary, Dr Mitsunobu Kamiya, at the address given

on the form. Members who wish to claim for missing or damaged issues should contact the Membership Secretary.

**ADDRESS FOR EDITORIAL CORRESPONDENCE** Kazuo Okuda, Graduate School of Kuroshio Science, Kochi University, 2-5-1 Akebono-cho, Kochi 780-8520, Japan (email [okuda@cc.kochi-u.ac.jp](mailto:okuda@cc.kochi-u.ac.jp)).

**DISCLAIMER** The Publisher, Society and Editors cannot be held responsible for errors or any consequences arising from the use of information contained in this journal; the views and opinions expressed do not necessarily reflect those of the Publisher, Society and Editors, neither does the publication of advertisements constitute any endorsement by the Publisher, Society and Editors of the products advertised.

© 2005 Japanese Society of Phycology.

**Cover** Nuclei and organelle nucleoids during gametogenesis in *Ulva compressa*. Gametophytic thalli release gametes two days after induction of gametogenesis in *U. compressa*. The aspects of gametogenesis were observed in DAPI-stained sections of thalli embedded in Technovit 7100. The large blue spots are nuclei and the small faint spots are nucleoids of chloroplasts and mitochondria in the thallus one day after induction (left). Thalli produced eight or sixteen gametes (center) and the gametes were released from cells (right) two days after induction. The inset is a representative thallus of *U. compressa*. The nuclear-DNA contents of released gametes were measured with laser scanning cytometry (LSC). See Kagami *et al.* in this issue.

For submission instructions, subscription and all other information visit <http://www.blackwellpublishing.com/pre>

ISSN 1322-0829 (Print) ISSN 1440-183 (online)

# The Japanese Society of Phycology

## Officers for 2005–2006

President: Hiroshi Kawai, Kobe University Research  
Center for Inland Seas, Kobe 657-8501, Japan

Secretary: Takeaki Hanyuda, Kobe University  
Research Center for Inland Seas, Kobe 657-8501,  
Japan

Public Relations Secretary: Satoshi Shimada, Center for  
Advanced Science and Technology, Hokkaido University,  
Sapporo 060-0810, Japan

Membership Secretary: Mitsunobu Kamiya, Faculty of  
Biotechnology, Fukui Prefectural University, Obama  
917-0003, Japan

Secretary for International Affairs: Ken-ichiro Ishida,  
Faculty of Science, Kanazawa University, Kanazawa  
920-1192, Japan

Treasurer: Daisuke Honda, Faculty of Science and  
Engineering, Konan University, Kobe 658-8501, Japan.

## Members of Executive Council 2005–2006

Tetsuro Ajisaka *Kyoto University*  
Daisuke Fujita *Tokyo University of Marine Science and  
Technology*  
Yoshiaki Hara *Yamagata University*  
Takeo Horiguchi *Hokkaido University*  
Masahiko Idei *Bunkyo University*  
Ichiro Imai *Kyoto University*  
Isao Inouye *University of Tsukuba*  
Ken-ichiro Ishida *Kanazawa University*

Tadahiko Kajiura *Yamaguchi University*  
Shigeo Kawaguchi *Kyushu University*  
Akira Kurashima *Mie University*  
Miyuki Maegawa *Mie University*  
Tamotsu Nagumo *The Nippon Dental University*  
Tadahide Noro *Kagoshima University*  
Kazuo Okuda *Kochi University*  
Naotsune Saga *Hokkaido University*  
Makoto Yoshizaki *Toho University*

## JOIN THE JAPANESE SOCIETY OF PHYCOLOGY AND RECEIVE FOUR ISSUES OF PHYCOLOGICAL RESEARCH PER YEAR FREE OF CHARGE

The Japanese Society of Phycology, founded in 1952, currently has 760 members (including 105 overseas members).  
The Society is open to anyone who is interested in pure or applied aspects of phycology.

### Application for membership

(Please type or write in block letters)

Membership starts from 2005

Name in full: \_\_\_\_\_,  
(Family name) (Given name and initials)

Mailing address: \_\_\_\_\_

\_\_\_\_\_  
(Postal code) (Country)

Telephone: \_\_\_\_\_ Fax: \_\_\_\_\_

E-mail: \_\_\_\_\_ Interests: \_\_\_\_\_

Signature: \_\_\_\_\_ Date: \_\_\_\_\_

**The annual fee for individual members is ¥8000**

**(¥7000 for members who reside outside Japan, ¥5000 for students who submit a verifying  
statement signed by their Chairperson or Head of Department)**

Payment by: ☐ Visa ☐ MasterCard ☐ American Express

Card number: \_\_\_\_\_ - \_\_\_\_\_ - \_\_\_\_\_ - \_\_\_\_\_ Expiry date: \_\_\_\_\_

Signature: \_\_\_\_\_

☐ International giro postal transfer (Postal Account No.: 01320-4-48748)

☐ International postal money order

Send application form to: Dr Mitsunobu Kamiya

Faculty of Biotechnology

Fukui Prefectural University

1-1 Gakuen-cho,

Obama 917-0003, Japan

Fax: +81 770 52 6003; email: jsphycol@anet.ne.jp



# Phycological Research

---

Volume 53 • Issue 2 • June 2005

---

Hideaki Sasaki, Akio Murakami and Hiroshi Kawai <i>Inorganic ion compositions in the Ulvophyceae and the Rhodophyceae, with special reference to sulfuric acid ion accumulations</i>	85
Mayuko Sato, Toshikazu Nishikawa, Tomokazu Yamazaki and Shigeyuki Kawano <i>Isolation of the plastid FtsZ gene from Cyanophora paradoxa (Glaucocystophyceae, Glaucocystophyta)</i>	93
Ewa Susek, Karin A. F. Zonneveld, Gerhard Fischer, Gerard J. M. Versteegh and Helmut Willems <i>Organic-walled dinoflagellate cyst production in relation to upwelling intensity and lithogenic influx in the Cape Blanc region (off north-west Africa)</i>	97
Eduardo A. Morales <i>Observations of the morphology of some known and new fragilarioid diatoms (Bacillariophyceae) from rivers in the USA</i>	113
Hideaki Sasaki, Akio Murakami and Hiroshi Kawai <i>Seasonal stability of sulfuric acid accumulation in the Dictyotales (Phaeophyceae)</i>	134
Taisuke Ohtsuka <i>Epipellic diatoms blooming in Isahaya Tidal Flat in the Ariake Sea, Japan, before the drainage following the Isahaya-Bay Reclamation Project</i>	138
Isabella A. Abbott and John M. Huisman <i>Studies in the Liagoraceae (Nemaliales, Rhodophyta) I. The genus Trichogloea</i>	149
Koji Iwamoto and Yoshihiro Shiraiwa <i>Technical improvement in the purification of enzymes from red algae using an aqueous two-phase partitioning system</i>	164
Gert Hansen and Øjvind Moestrup <i>Flagellar apparatus and nuclear chambers of the green dinoflagellate Gymnodinium chlorophorum</i>	169