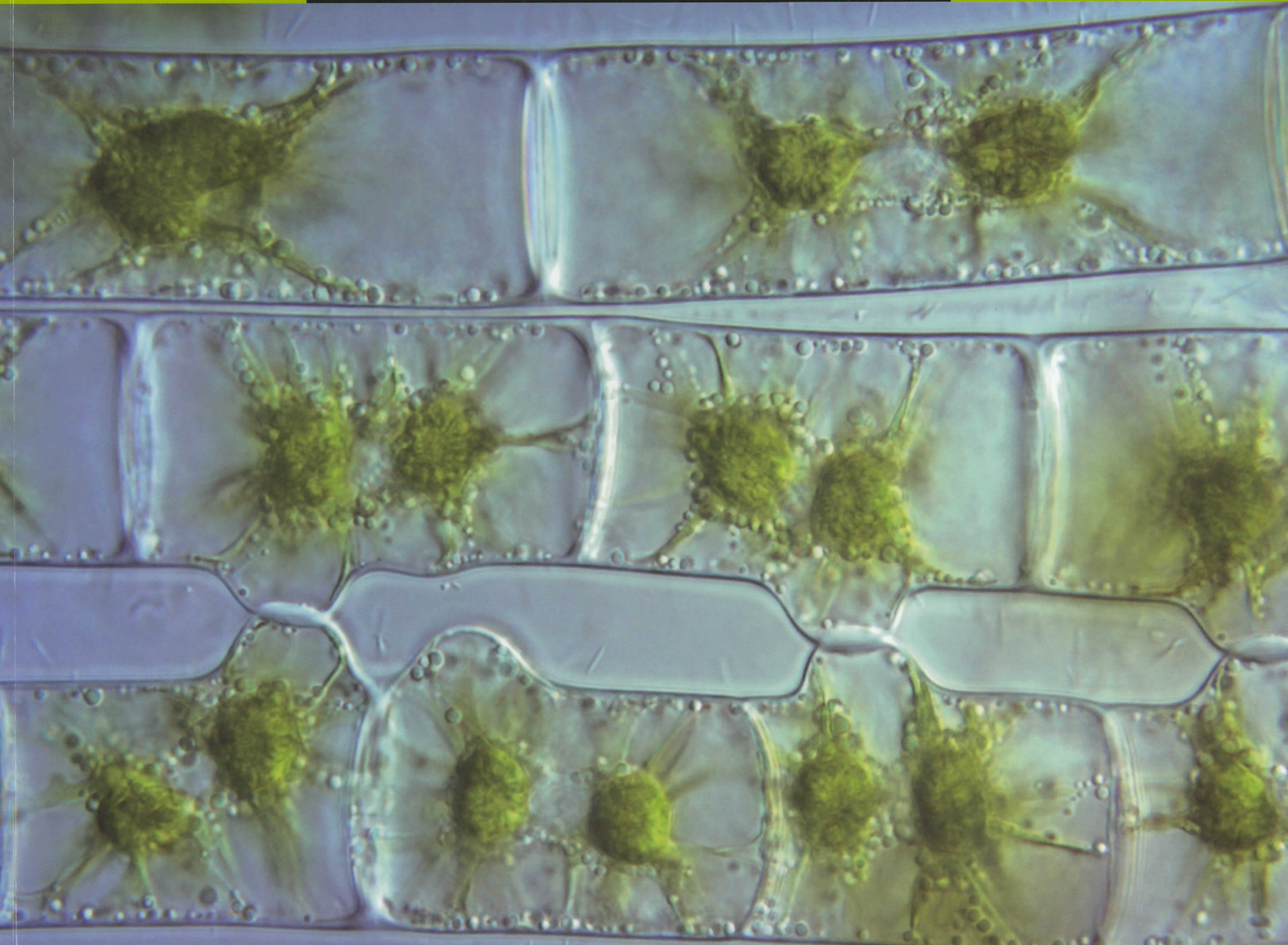


# Phycological Research

.....  
Volume 55 • Issue 2 • June 2007  
.....

ISSN 1322-0829  
.....



**Blackwell  
Publishing**

**The Japanese  
Society of  
Phycology**



# Phycological Research

## EDITOR-IN-CHIEF

Ken-ichiro Ishida

Graduate School of Life and Environmental Sciences, University of Tsukuba, Japan

## ASSOCIATE EDITORS

John M. Archibald  
Department of  
Biochemistry and  
Molecular Biology,  
Dalhousie University,  
Canada

Olivier De Clerck  
Biology Department,  
Ghent University,  
Belgium

Yuji Inagaki  
Center for Computational  
Science, University of  
Tsukuba, Japan

Mitsunobu Kamiya  
Department of Marine  
Bioscience, Faculty of  
Biotechnology, Fukui  
Prefectural University,  
Japan

Ulf Karsten  
Institute of Aquatic  
Ecology - Applied  
Ecology - University of  
Rostock, Germany

Ulf Karsten  
Department of Biological  
Sciences, University of  
Rostock, Germany

Jeong Ha Kim  
Department of Biological  
Sciences,  
Sungkyunkwan  
University, Korea

Gwang Hoon Kim  
Department of Biology,  
Kongju National  
University, Korea

Kazuhiko Koike  
Department of Marine  
Bioscience, School of  
Fisheries Sciences,  
Kitasato University,  
Japan

Brian S. Leander  
Departments of Zoology  
and Botany, University  
of British Columbia,  
Canada

Shigeki Mayama  
Department of Biology,  
Tokyo Gakugei  
University, Japan

Hideaki Miyashita  
Department of Technology  
and Ecology, Graduate  
School of Global  
Environmental Studies,  
Kyoto University, Japan

Taizo Motomura  
Field Science Center for  
Northern Biosphere,  
Hokkaido University,  
Japan

Hisayoshi Nozaki  
Department of Biological  
Sciences, Graduate  
School of Science,  
University of Tokyo,  
Japan

Makoto Watanabe  
Graduate School of Life  
and Environmental  
Sciences, University of  
Tsukuba, Japan

John West  
School of Botany,  
University of  
Melbourne, Australia

Giuseppe C. Zuccarello  
School of Biological  
Sciences,  
Victoria University of  
Wellington,  
New Zealand

## EDITORIAL ADVISORY BOARD

Yuji Fujita Nagasaki, Japan

Takeo Horiguchi Hokkaido, Japan

Ichiro Imai Kyoto, Japan

Hironao Kataoka Sendai, Japan

Hiroshi Kawai Kobe, Japan

Dieter G. Müller Konstanz, Germany

Masao Ohno Kochi, Japan

Megumi Okazaki Tokyo, Japan

Robert Sheath Guelph, Canada

Makoto M. Watanabe Tsukuba, Japan

Yasutsugu Yokohama Shizugawa, Japan

Isao Inouye Tsukuba, Japan

This journal is available online at Blackwell synergy. Visit <http://www.blackwell-synergy.com> to search the articles and register for table of contents email alerts.

Access to this journal is available free online within institutions in the developing world through the AGORA initiative with the FAO. For information, visit <http://www.aginternetwork.org>.

Blackwell Publishing is a CarbonNeutral company. For more information visit <http://www.blackwellpublishing.com/carbonneutral>.

**AIMS AND SCOPE** *Phycological Research* is published by the Japanese Society of Phycology and complements the *Japanese Journal of Phycology*. The Journal publishes international, peer-reviewed research dealing with all aspects of phycology to facilitate the international exchange of results. All articles are peer-reviewed by at least two researchers expert in the field of the submitted paper. *Phycological Research* has been credited by the International Association for Plant Taxonomy for the purpose of registration of new non-vascular plant names (including fossils). For further information see <http://bgbm3.bgbm.fu-berlin.de/iapt/registration/journals/htm>.

**ABSTRACTING AND INDEXING SERVICES** This journal is indexed by Aquatic Sciences & Fisheries Abstracts, BIOBASE, Biological Abstracts, BIOSIS Previews, Biotechnology & Bioengineering Abstracts, Cambridge Scientific Abstracts, Chemical Abstracts Service, Current Awareness in Biological Sciences, Current Contents, Ecological Abstracts, EMBASE/Excerpta Medica, Environmental Sciences and Pollution Management, GEOBASE, Irrigation and Drainage Abstracts, Microbiology Abstracts, Oceanic Abstracts, Pollution Abstracts, ProQuest (previously University Microfilms), Referativnyi Zhurnal, Science Citation Index (ISI), Soils and Fertilizers, Weed Abstracts, Zoological Record, National Inquiry Services Centre (NISC).

**THE JAPANESE SOCIETY OF PHYCOLOGY** We invite anyone who is interested in any aspect of phycology to become a member of the Society. As a member you will receive *Phycological Research* and the *Japanese Journal of Phycology* free of charge. The annual membership fee for individuals ¥8000. (Members who reside outside Japan will receive only the English language journal *Phycological Research* and the annual membership fee is ¥7000 (standard), ¥5000 (student).)

Those who wish to join the Society should send the application form (at the back of each issue of the Journal), together with payment, to the Membership Secretary, Dr Mitsunobu Kamiya, at the address given on the form. Members who wish to claim for missing or damaged issues should contact the Membership Secretary.

**ADDRESS FOR EDITORIAL CORRESPONDENCE** Ken-ichiro Ishida, Graduate School of Life and Environmental Sciences, University of Tsukuba, Tsukuba, Ibaraki 305-8572, Japan (E-mail: [ishida@sakura.cc.tsukuba.ac.jp](mailto:ishida@sakura.cc.tsukuba.ac.jp)).

**DISCLAIMER** The Publisher, Society and Editors cannot be held responsible for errors or any consequences arising from the use of information contained in this journal; the views and opinions expressed do not necessarily reflect those of the Publisher, Society and Editors, neither does the publication of advertisements constitute any endorsement by the Publisher, Society and Editors of the products advertised.

© 2007 Japanese Society of Phycology.

This publication is supported in part by a Grant-Aid for Publication of Scientific Research Results from the Japan Society for the Promotion of Science (JSPS).

Cover Conjugation in *Zygnema cruciatum*.  
Photographed by Dr. Gwang Hoon Kim

For submission instructions, subscription and all other information visit  
<http://www.blackwellpublishing.com/pre>

ISSN 1322-0829 (Print) ISSN 1440-1835 (online)

# The Japanese Society of Phycology

## Officers for 2007–2008

President: Hiroshi Kawai, Kobe University Research  
Center for Inland Seas, Kobe 657-8501, Japan  
Secretary: Takeaki Hanyuda, Kobe University  
Research Center for Inland Seas, Kobe 657-8501,  
Japan  
Public Relations Secretary: Yukimasa Yamagishi, Faculty  
of Life Science and Biotechnology, Fukuyama  
University, Fukuyama 729-0292, Japan

Membership Secretary: Mitsunobu Kamiya, Faculty of  
Biotechnology, Fukui Prefectural University, Obama  
917-0003, Japan  
Secretary for International Affairs: Satoshi Shimada,  
Creative Research Initiative Sousei, Hokkaido  
University, Sapporo 060-0810, Japan  
Treasurer: Daisuke Honda, Faculty of Science and  
Engineering, Konan University, Kobe 658-8501, Japan.

## Members of Executive Council 2007–2008

Hideomi Amano *Mie University, Japan*  
Daisuke Fujita *Tokyo University of Marine Science and  
Technology, Japan*  
Yuji Fujita *Nagasaki University, Japan*  
Shinji Handa *Hiroshima Environmental and Health  
Association, Japan*  
Yoshiaki Hara *Yamagata University, Japan*  
Kyoko Hatano *Kyoto University, Japan*  
Ken-ichiro Ishida *University of Tsukuba, Japan*  
Masanobu Kawachi *National Institute for  
Environmental Studies, Japan*  
Akira Kurashima *Mie University, Japan*

Hideaki Miyashita *Kyoto University, Japan*  
Taizo Motomura *Hokkaido University, Japan*  
Tadahide Noro *Kagoshima University, Japan*  
Shuji Ohtani *Shimane University, Japan*  
Jeanine L. Olsen *University of Groningen, The  
Netherlands*  
Akira F. Peters *Roscoff, France*  
Naotsune Saga *Hokkaido University, Japan*  
Yoshihiro Shiraiwa *University of Tsukuba, Japan*  
Jiro Tanaka *Tokyo University of Marine Science and  
Technology, Japan*

## JOIN THE JAPANESE SOCIETY OF PHYCOLOGY AND RECEIVE FOUR ISSUES OF PHYCOLOGICAL RESEARCH PER YEAR FREE OF CHARGE

The Japanese Society of Phycology, founded in 1952, currently has 760 members (including 105 overseas members).  
The Society is open to anyone who is interested in pure or applied aspects of phycology.

### Application for membership

(Please type or write in block letters)

Membership starts from 2007

Name in full: \_\_\_\_\_,  
(Family name) (Given name and initials)

Mailing address: \_\_\_\_\_

\_\_\_\_\_  
(Postal code) (Country)

Telephone: \_\_\_\_\_ Fax: \_\_\_\_\_

E-mail: \_\_\_\_\_ Interests: \_\_\_\_\_

Signature: \_\_\_\_\_ Date: \_\_\_\_\_

### The annual fee for individual members is ¥8000

(¥7000 for members who reside outside Japan, ¥5000 for students who submit a verifying  
statement signed by their Chairperson or Head of Department)

Payment by: ☐ Visa ☐ MasterCard ☐ American Express

Card number: \_\_\_\_\_ - \_\_\_\_\_ - \_\_\_\_\_ Expiry date: \_\_\_\_\_

Signature: \_\_\_\_\_

☐ International giro postal transfer (Postal Account No.: 01320-4-48748)

☐ International postal money order

Send application form to: Dr Mitsunobu Kamiya  
Faculty of Biotechnology  
Fukui Prefectural University  
1-1 Gakuen-cho,  
Obama 917-0003, Japan  
Fax: +81 770 52 6003; email: jsp@wwwsoc.nii.ac.jp



# Phycological Research

---

Volume 55 • Issue 2 • June 2007

---

- Yoshie Kobayashi, Ayako Torii, Misako Kato and Kyoko Adachi  
*Accumulation of cyclitols functioning as compatible solutes in the haptophyte alga Pavlova sp.* 81
- Shauna Murray, Yukio Nagahama and Yasuwo Fukuyo  
*Phylogenetic study of benthic, spine-bearing prorocentroids, including Prorocentrum fukuyoi sp. nov.* 91
- Morgan L. Vis, James T. Harper and Gary W. Saunders  
*Large subunit rDNA and rbcL gene sequence data place Petrohia bernabei gen. et sp. nov. in the Batrachospermales (Rhodophyta), but do not provide further resolution among taxa in this order* 103
- Michio Masuda, Akira Kurihara and Kazuhiro Kogame  
*Two species of Dasys (Ceramiales, Rhodophyta) from Bonin Islands, southern Japan, with the description of Dasys boninensis sp. nov.* 113
- Peter A. Siver, Paul B. Hamilton and Eduardo A. Morales  
*Notes on the genus Nupela (Bacillariophyceae) including the description of a new species, Nupela scissura sp. nov. and an expanded description of Nupela paludigena* 125
- Gwang Hoon Kim, Minchul Yoon, John A. West, Tatyana A. Klochkova and Sung-Ho Kim  
*Possible surface carbohydrates involved in signaling during conjugation process in Zygnema cruciatum monitored with fluorescein isothiocyanate-lectins (Zygnemataceae, Chlorophyta)* 135
- Abdellah Amimi, Aziza Mouradi, Laila Bennasser and Thiery Givernaud  
*Seasonal variations in thalli and carrageenan composition of Gigartina pistillata (Gmelin) Stackhouse (Rhodophyta, Gigartinales) harvested along the Atlantic coast of Morocco* 143
- Etienne Jean Faye, Kazuhiro Kogame, Satoshi Shimada, Shigeo Kawaguchi and Michio Masuda  
*Taxonomic features of the red alga Meristotheca coacta (Solieriaceae, Gigartinales)* 150
- Mona Hoppenrath, Takeo Horiguchi, Yukiko Miyoshi, Marina Selina, 'Max' F.J.R. Taylor and Brian S. Leander  
*Taxonomy, phylogeny, biogeography, and ecology of Sabulodinium undulatum (Dinophyceae), including an emended description of the species* 159
- Shauna Murray, Miguel de Salas, Jim Luong-Van and Gustaaf Hallegraeff  
*Phylogenetic study of Gymnodinium dorsalisulcum comb. nov. from tropical Australian coastal waters (Dinophyceae)* 176
-