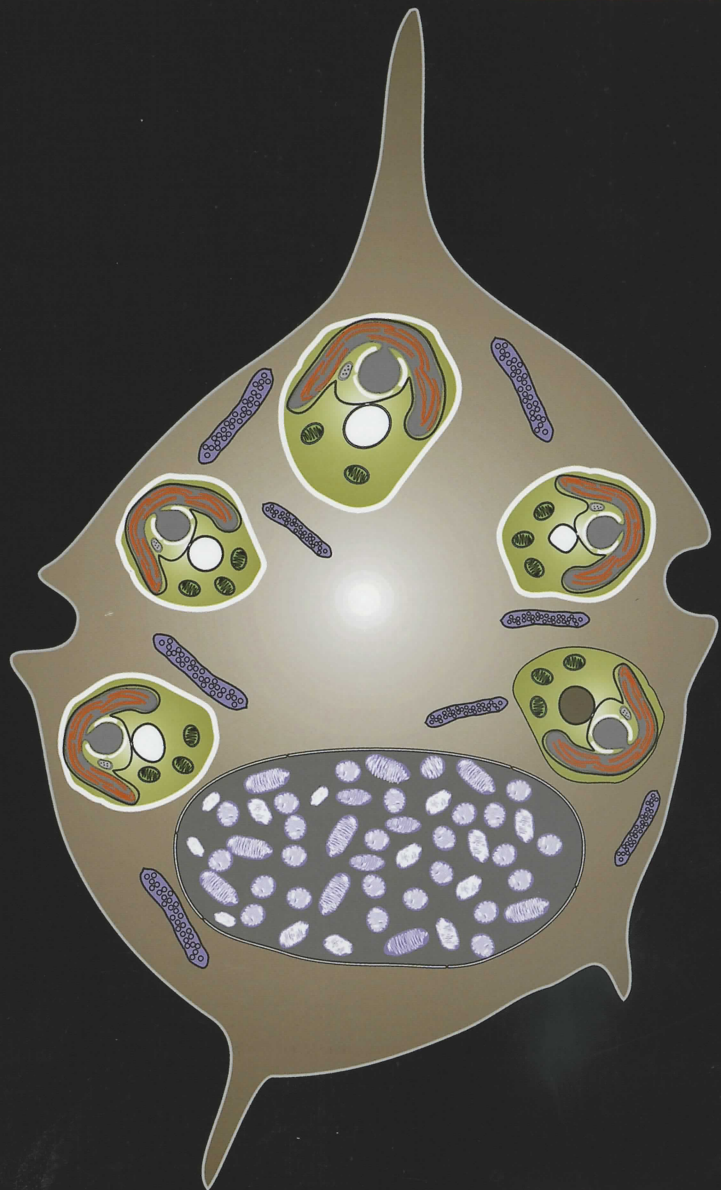
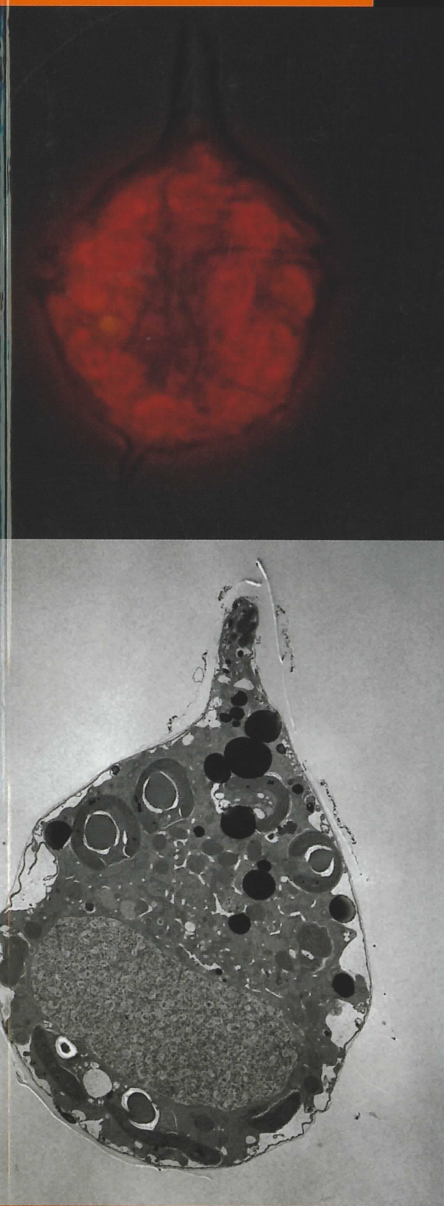


Phycological Research

Volume 56 • Issue 4 • December 2008

ISSN 1322-0829



WILEY-
BLACKWELL

The Japanese
Society of
Phycology

Phycological Research

EDITOR-IN-CHIEF

Ken-ichiro Ishida

Graduate School of Life and Environmental Sciences, University of Tsukuba, Japan

ASSOCIATE EDITORS

John M. Archibald
Department of
Biochemistry and
Molecular Biology,
Dalhousie University,
Canada

Olivier De Clerck
Biology Department,
Ghent University,
Belgium

Yuji Inagaki
Center for Computational
Science, University of
Tsukuba, Japan

Mitsunobu Kamiya
Department of Marine
Bioscience, Faculty of
Biotechnology, Fukui
Prefectural University,
Japan

Ulf Karsten
Institute of Aquatic
Ecology - Applied
Ecology - University of
Rostock, Germany

Jeong Ha Kim
Department of Biological
Sciences,
Sungkyunkwan
University, Korea

Gwang Hoon Kim
Department of Biology,
Kongju National
University, Korea

Kazuhiko Koike
Graduate School of
Biosphere Science,
Hiroshima University,
Japan

Brian S. Leander
Departments of Zoology
and Botany, University
of British Columbia,
Canada

Shigeki Mayama
Department of Biology,
Tokyo Gakugei
University, Japan

Ichiro Mine
Graduate School of
Kuroshio Science,
Kochi University, Japan

Hideaki Miyashita
Department of Technology
and Ecology, Graduate
School of Global
Environmental Studies,
Kyoto University, Japan

Taizo Motomura
Field Science Center for
Northern Biosphere,
Hokkaido University,
Japan

Hisayoshi Nozaki
Department of Biological
Sciences, Graduate
School of Science,
University of Tokyo,
Japan

Makoto Watanabe
Graduate School of Life
and Environmental
Sciences, University of
Tsukuba, Japan

John West
School of Botany,
University of
Melbourne, Australia

Giuseppe C. Zuccarello
School of Biological
Sciences, Victoria
University of Wellington,
New Zealand

This journal is available online at Wiley Interscience. Visit www3.interscience.wiley.com to search the articles and register for table of contents email alerts.

Access to this journal is available free online within institutions in the developing world through the AGORA initiative with the FAO, and the OARE initiative with UEP. For information, visit <http://www.aginternetwork.org>, www.oarescience.org.

AIMS AND SCOPE *Phycological Research* is published by the Japanese Society of Phycology and complements the *Japanese Journal of Phycology*. The Journal publishes international, peer-reviewed research dealing with all aspects of phycology to facilitate the international exchange of results. All articles are peer-reviewed by at least two researchers expert in the field of the submitted paper. *Phycological Research* has been credited by the International Association for Plant Taxonomy for the purpose of registration of new non-vascular plant names (including fossils). For further information see <http://bgbm3.bgbm.fu-berlin.de/iapt/registration/journals/htm>.

ABSTRACTING AND INDEXING SERVICES This journal is indexed by Aquatic Sciences & Fisheries Abstracts, BIOBASE, Biological Abstracts, BIOSIS Previews, Biotechnology & Bioengineering Abstracts, Cambridge Scientific Abstracts, Chemical Abstracts Service, Current Awareness in Biological Sciences, Current Contents, Ecological Abstracts, EMBASE/Excerpta Medica, Environmental Sciences and Pollution Management, GEOBASE, Irrigation and Drainage Abstracts, Microbiology Abstracts, Oceanic Abstracts, Pollution Abstracts, ProQuest (previously University Microfilms), Referativnyi Zhurnal, Science Citation Index (ISI), Soils and Fertilizers, Weed Abstracts, Zoological Record, National Inquiry Services Centre (NISC).

THE JAPANESE SOCIETY OF PHYCOLOGY We invite anyone who is interested in any aspect of phycology to become a member of the Society. As a member you will receive *Phycological Research* and the *Japanese Journal of Phycology* free of charge. The annual membership fee for individuals ¥8000. (Members who reside outside Japan will receive only the English language journal *Phycological Research* and the annual membership fee is ¥7000 (standard), ¥5000 (student).)

Those who wish to join the Society should send the application form (at the back of each issue of the Journal), together with payment, to the Membership Secretary, Dr Mitsunobu Kamiya, at the address given on the

form. Members who wish to claim for missing or damaged issues should contact the Membership Secretary.

ADDRESS FOR EDITORIAL CORRESPONDENCE Ken-ichiro Ishida, Graduate School of Life and Environmental Sciences, University of Tsukuba, Tsukuba, Ibaraki 305-8572, Japan (E-mail: ishida@sakura.cc.tsukuba.ac.jp).

DISCLAIMER The Publisher, Society and Editors cannot be held responsible for errors or any consequences arising from the use of information contained in this journal; the views and opinions expressed do not necessarily reflect those of the Publisher, Society and Editors, neither does the publication of advertisements constitute any endorsement by the Publisher, Society and Editors of the products advertised.

© 2008 Japanese Society of Phycology.

This publication is supported in part by a Grant-Aid for Publication of Scientific Research Results from the Japan Society for the Promotion of Science (JSPS).

Cover Light micrograph of a gonyaulacalean dinoflagellate *Amylax buxus*, merged with a fluorescent micrograph (blue light excitation), showing numerous spherical bodies emitting phycobilin fluorescence (left upper). In a transmission electron micrograph (left lower), the spherical bodies are revealed as cryptophyte vestiges, involving all the intracellular components but lacking cell-surface structure and nucleus. A deformed schematic diagram is shown on the right (see Koike and Takishita in this issue for detail).

Note to NIH Grantees

Pursuant to NIH mandate, Wiley-Blackwell will post the accepted version of contributions authored by NIH grant-holders to PubMed Central upon acceptance. This accepted version will be made publicly available 12 months after publication. For further information, see www.wiley.com/go/nihmandate.

For submission instructions, subscription and all other information visit <http://www.blackwellpublishing.com/pre>

ISSN 1322-0829 (Print) ISSN 1440-1835 (online)

The Japanese Society of Phycology

Officers for 2007–2008

President: Hiroshi Kawai, Kobe University Research
Center for Inland Seas, Kobe 657-8501, Japan
Secretary: Takeaki Hanyuda, Kobe University
Research Center for Inland Seas, Kobe 657-8501,
Japan
Public Relations Secretary: Yukimasa Yamagishi, Faculty
of Life Science and Biotechnology, Fukuyama
University, Fukuyama 729-0292, Japan

Membership Secretary: Mitsunobu Kamiya, Faculty of
Biotechnology, Fukui Prefectural University, Obama
917-0003, Japan
Secretary for International Affairs: Satoshi Shimada,
Creative Research Initiative Sousei, Hokkaido
University, Sapporo 060-0810, Japan
Treasurer: Daisuke Honda, Faculty of Science and
Engineering, Konan University, Kobe 658-8501, Japan.

Members of Executive Council 2007–2008

Hideomi Amano *Mie University, Japan*
Daisuke Fujita *Tokyo University of Marine Science and
Technology, Japan*
Yuji Fujita *Nagasaki University, Japan*
Shinji Handa *Hiroshima Environmental and Health
Association, Japan*
Yoshiaki Hara *Yamagata University, Japan*
Kyoko Hatano *Kyoto University, Japan*
Ken-ichiro Ishida *University of Tsukuba, Japan*
Masanobu Kawachi *National Institute for
Environmental Studies, Japan*
Akira Kurashima *Mie University, Japan*

Hideaki Miyashita *Kyoto University, Japan*
Taizo Motomura *Hokkaido University, Japan*
Tadahide Noro *Kagoshima University, Japan*
Shuji Ohtani *Shimane University, Japan*
Jeanine L. Olsen *University of Groningen, The
Netherlands*
Akira F. Peters *Roscoff, France*
Naotsune Saga *Hokkaido University, Japan*
Yoshihiro Shiraiwa *University of Tsukuba, Japan*
Jiro Tanaka *Tokyo University of Marine Science and
Technology, Japan*

JOIN THE JAPANESE SOCIETY OF PHYCOLOGY AND RECEIVE FOUR ISSUES OF PHYCOLOGICAL RESEARCH PER YEAR FREE OF CHARGE

The Japanese Society of Phycology, founded in 1952, currently has 760 members (including 105 overseas members).
The Society is open to anyone who is interested in pure or applied aspects of phycology.

Application for membership

(Please type or write in block letters) Membership starts from 2007

Name in full: _____,
(Family name) (Given name and initials)

Mailing address: _____

(Postal code) (Country)

Telephone: _____ Fax: _____

E-mail: _____ Interests: _____

Signature: _____ Date: _____

The annual fee for individual members is ¥8000

**(¥7000 for members who reside outside Japan, ¥5000 for students who submit a verifying
statement signed by their Chairperson or Head of Department)**

Payment by: ☐ Visa ☐ MasterCard ☐ American Express

Card number: _____ - _____ - _____ - _____ Expiry date: _____

Signature: _____

☐ International giro postal transfer (Postal Account No.: 01320-4-48748)

☐ International postal money order

Send application form to: Dr Mitsunobu Kamiya
Faculty of Biotechnology
Fukui Prefectural University
1-1 Gakuen-cho,
Obama 917-0003, Japan
Fax: +81 770 52 6003; email: jsp@wwwsoc.nii.ac.jp

Phycological Research

Volume 56 • Issue 4 • December 2008

Toshio Sakamoto, Kaori Inoue-Sakamoto, Søren Persson and Donald A. Bryant <i>Transcription factor NtcB specifically controls the nitrate assimilation genes in the marine cyanobacterium Synechococcus sp. strain PCC 7002</i>	223
Klervi Le Lann, Camille Jégou and Valérie Stiger-Pouvreau <i>Effect of different conditioning treatments on total phenolic content and antioxidant activities in two Sargassacean species: Comparison of the frondose Sargassum muticum (Yendo) Fensholt and the cylindrical Bifurcaria bifurcata R. Ross</i>	238
Alecia Bellgrove and Masakazu N. Aoki <i>Variation in gametophyte dominance in populations of Chondrus verrucosus (Gigartinales, Rhodophyta)</i>	246
Shinya Sato, Tsuyoshi Watanabe, Richard M. Crawford, Wiebe H.C.F. Kooistra and Linda K. Medlin <i>Morphology of four plagiogrammatean diatoms; Dimeregramma minor var. nana, Neofragilaria nicobarica, Plagiogramma atomus and Psammogramma vigoensis gen. et sp. nov., and their phylogenetic relationship inferred from partial large subunit rDNA</i>	255
Alison R. Sherwood, Morgan L. Vis, Timothy J. Entwistle, Orlando Necchi Jr and Gernot G. Presting <i>Contrasting intra versus interspecies DNA sequence variation for representatives of the Batrachospermales (Rhodophyta): Insights from a DNA barcoding approach</i>	269
Shao Jun Pang, Ti Feng Shan and Zhi Huai Zhang <i>Responses of vegetative gametophytes of Undaria pinnatifida to high irradiance in the process of gametogenesis</i>	280
Ni-Ni-Win, Takeaki Hanyuda, Shogo Arai, Masayuki Uchimura, Isabella A. Abbott and Hiroshi Kawai <i>Three new records of Padina in Japan based on morphological and molecular markers</i>	288
Kazuhiko Koike and Kiyotaka Takishita <i>Anucleated cryptophyte vestiges in the gonyaulacalean dinoflagellates Amylax buxus and Amylax triacantha (Dinophyceae)</i>	301
Shigeru Kumano, Ryozi Seto and Tadao Yoshida <i>Research note: Lectotypification of Nemalionopsis tortuosa Yoneda et Yagi, Thoreales, Rhodophyta</i>	312
Referees	314
Author Index/Subject Index	315