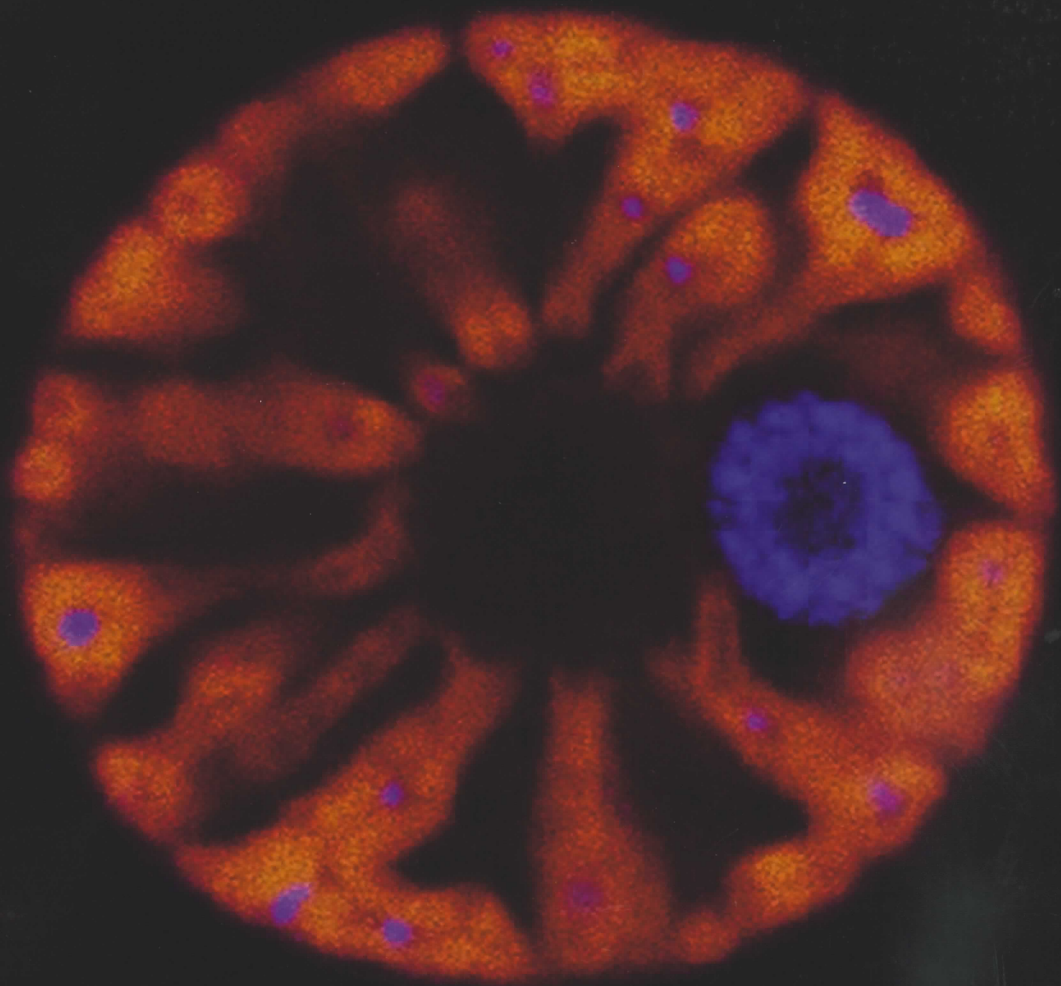


Phycological Research

Volume 57 • Issue 4 • December 2009

ISSN 1322-0829




WILEY-
BLACKWELL

The Japanese
Society of
Phycology

Phycological Research

EDITOR-IN-CHIEF

Ken-ichiro Ishida

Graduate School of Life and Environmental Sciences, University of Tsukuba, Japan

ASSOCIATE EDITORS

John M. Archibald
Department of
Biochemistry and
Molecular Biology,
Dalhousie University,
Canada

Olivier De Clerck
Biology Department,
Ghent University,
Belgium

Yuji Inagaki
Center for Computational
Science, University of
Tsukuba, Japan

Mitsunobu Kamiya
Department of Marine
Bioscience, Faculty of
Biotechnology, Fukui
Prefectural University,
Japan

Ulf Karsten
Institute of Aquatic
Ecology - Applied
Ecology - University of
Rostock, Germany

Jeong Ha Kim
Department of Biological
Sciences,
Sungkyunkwan
University, Korea

Gwang Hoon Kim
Department of Biology,
Kongju National
University, Korea

Kazuhiko Koike
Graduate School of
Biosphere Science,
Hiroshima University,
Japan

Brian S. Leander
Departments of Zoology
and Botany, University
of British Columbia,
Canada

Shigeki Mayama
Department of Biology,
Tokyo Gakugei
University, Japan

Ichiro Mine
Graduate School of
Kuroshio Science,
Kochi University, Japan

Hideaki Miyashita
Department of Technology
and Ecology, Graduate
School of Global
Environmental Studies,
Kyoto University, Japan

Taizo Motomura
Field Science Center for
Northern Biosphere,
Hokkaido University,
Japan

Hisayoshi Nozaki
Department of Biological
Sciences, Graduate
School of Science,
University of Tokyo,
Japan

Makoto Watanabe
Graduate School of Life
and Environmental
Sciences, University of
Tsukuba, Japan

John West
School of Botany,
University of
Melbourne, Australia

Giuseppe C. Zuccarello
School of Biological
Sciences, Victoria
University of Wellington,
New Zealand

This journal is available online at Wiley Interscience. Visit www.interscience.wiley.com to search the articles and register for table of contents email alerts.

Access to this journal is available free online within institutions in the developing world through the AGORA initiative with the FAO, and the OARE initiative with UEP. For information, visit <http://www.aginternetwork.org>, www.oarescience.org.

AIMS AND SCOPE *Phycological Research* is published by the Japanese Society of Phycology and complements the *Japanese Journal of Phycology*. The Journal publishes international, peer-reviewed research dealing with all aspects of phycology to facilitate the international exchange of results. All articles are peer-reviewed by at least two researchers expert in the field of the submitted paper. *Phycological Research* has been credited by the International Association for Plant Taxonomy for the purpose of registration of new non-vascular plant names (including fossils). For further information see <http://bgbm3.bgbm.fu-berlin.de/iapt/registration/journals/htm>.

ABSTRACTING AND INDEXING SERVICES This journal is indexed by Aquatic Sciences & Fisheries Abstracts, BIOBASE, Biological Abstracts, BIOSIS Previews, Biotechnology & Bioengineering Abstracts, Cambridge Scientific Abstracts, Chemical Abstracts Service, Current Awareness in Biological Sciences, Current Contents, Ecological Abstracts, EMBASE/Excerpta Medica, Environmental Sciences and Pollution Management, GEOBASE, Irrigation and Drainage Abstracts, Microbiology Abstracts, Oceanic Abstracts, Pollution Abstracts, ProQuest (previously University Microfilms), Referativnyi Zhurnal, Science Citation Index (ISI), Soils and Fertilizers, Weed Abstracts, Zoological Record, National Inquiry Services Centre (NISC).

THE JAPANESE SOCIETY OF PHYCOLOGY We invite anyone who is interested in any aspect of phycology to become a member of the Society. As a member you will receive *Phycological Research* and the *Japanese Journal of Phycology* free of charge. The annual membership fee for individuals ¥8000. Members who reside outside Japan will receive only the English language journal *Phycological Research* and the annual membership fee is ¥7000 (standard), ¥5000 (student).

Those who wish to join the Society should send the application form (at the back of each issue of the Journal), together with payment, to the Membership Secretary, Dr Chikako Nagasato, at the address given on the form. Members who wish to claim for missing or damaged issues should contact the Membership Secretary.

ADDRESS FOR EDITORIAL CORRESPONDENCE Ichiro Mine, Graduate School of Kuroshio Science, Kochi University, 2-5-1 Akebono-cho, Kochi, Kochi 780-8520, Japan (E-mail: mine@cc.kochi-u.ac.jp).

DISCLAIMER The Publisher, Society and Editors cannot be held responsible for errors or any consequences arising from the use of information contained in this journal; the views and opinions expressed do not necessarily reflect those of the Publisher, Society and Editors, neither does the publication of advertisements constitute any endorsement by the Publisher, Society and Editors of the products advertised.

© 2009 Japanese Society of Phycology.

Cover The unicellular red alga *Corynoplatis japonica* gen et sp. nov. (Rhodophyceae) has an autofluorescent red chloroplast with many lobes directed towards the cell center, which has a "hollow" appearance due to a lack of fluorescence. Blue Hoechst DNA staining reveals chloroplast genomes and abundant heterochromatin in the eccentric nucleus. The large central nucleolus lacks staining since it lacks DNA. (See Yokoyama et al. pp. 278–289). Confocal photo by Tim Spurrck.

Note to NIH Grantees

Pursuant to NIH mandate, Wiley-Blackwell will post the accepted version of contributions authored by NIH grant-holders to PubMed Central upon acceptance. This accepted version will be made publicly available 12 months after publication. For further information, see www.wiley.com/go/nihmandate.

For submission instructions, subscription and all other information visit <http://www.blackwellpublishing.com/pre>

ISSN 1322-0829 (Print) ISSN 1440-1835 (online)

The Japanese Society of Phycology

Officers for 2009–2010

President: Takeo Horiguchi, Faculty of Science,
Hokkaido University, Sapporo 060-0810, Japan
Secretary: Kazuhiro Kogame, Faculty of Science,
Hokkaido University, Sapporo 060-0810,
Japan
Public Relations Secretary: Yukimasa Yamagishi, Faculty
of Life Science and Biotechnology, Fukuyama
University, Fukuyama 729-0292, Japan

Membership Secretary: Chikako Nagasato, Field Science
Center for Northern Biosphere, Hokkaido University,
Muroran 051-0003, Japan
Secretary for International Affairs: Shinya Uwai, Faculty of
Science, Niigata University, Niigata 950-2181, Japan
Treasurer: Tsuyoshi Abe, The Hokkaido University
Museum, Hokkaido University, Sapporo 060-0810,
Japan

Members of Executive Council 2009–2010

John J. Bolton *University of Cape Town, South Africa*
Isao Inouye *University of Tsukuba, Japan*
Mitsunobu Kamiya *Fukui Prefectural University, Japan*
Hironao Kataoka *Tohoku University, Japan*
Masanobu Kawachi *National Institute for Environmental
Studies, Japan*
Shigeo Kawaguchi *Kyushu University, Japan*
Hiroshi Kawai *Kobe University, Japan*
Miyuki Maegawa *Mie University, Japan*
Shigeki Mayama *Tokyo Gakugei University, Japan*
Shinichi Miyamura *University of Tsukuba, Japan*
Hideaki Miyashita *Kyoto University, Japan*

Hiroyuki Mizuta *Hokkaido University, Japan*
Noboru Murase *National Fisheries University, Japan*
Nobuyoshi Nanba *Kitasato University, Japan*
Jeanine L. Olsen *University of Groningen, The
Netherlands*
Shuji Ohtani *Shimane University, Japan*
Jiro Tanaka *Tokyo University of Marine Science and
Technology, Japan*
Ryuta Terada *Kagoshima University, Japan*
John A. West *University of Melbourne, Australia*
Hajime Yasui *Hokkaido University, Japan*

JOIN THE JAPANESE SOCIETY OF PHYCOLOGY AND RECEIVE FOUR ISSUES OF PHYCOLOGICAL RESEARCH PER YEAR FREE OF CHARGE

The Japanese Society of Phycology, founded in 1952, currently has 760 members (including 105 overseas members).
The Society is open to anyone who is interested in pure or applied aspects of phycology.

Application for membership

(Please type or write in block letters)

Membership starts from 2009

Name in full: _____,
(Family name) (Given name and initials)

Mailing address: _____

(Postal code) (Country)

Telephone: _____ Fax: _____

E-mail: _____ Interests: _____

Signature: _____ Date: _____

The annual fee for individual members is ¥8000
**(¥7000 for members who reside outside Japan, ¥5000 for students who submit a verifying
statement signed by their Chairperson or Head of Department)**

Payment by: ☐ Visa ☐ MasterCard ☐ American Express

Card number: _____ - _____ - _____ - _____ Expiry date: _____

Signature: _____

☐ International giro postal transfer (Postal Account No.: 01320-4-48748)

☐ International postal money order

Send application form to: Dr Chikako Nagasato
Muroran Marine Station
Field Science Center for Northern Biosphere
Hokkaido University
Muroran 051-0003, Japan
Fax: +81-143-22-4135
Email: jsp@wwwsoc.nii.ac.jp

Phycological Research

Volume 57 • Issue 4 • December 2009

Jingie Yu, Zhongkui Li and Jerry J. Brand	
<i>Characterization of a green alga isolated from infected human external tissue</i>	251
Hisae Kawami, René van Wezel, Reinoud P.T. Koeman and Kazumi Matsuoka	
<i>Protoperidinium tricingulatum sp. nov. (Dinophyceae), a new motile form of a round, brown, and spiny dinoflagellate cyst</i>	259
Thiago Kusakariba and Orlando Necchi Júnior	
<i>Daily dynamics of photosynthesis of the freshwater red alga Sirodotia delicatula (Batrachospermales, Rhodophyta)</i>	268
Akiko Yokoyama, Joseph L. Scott, Giuseppe C. Zuccarello, Makiko Kajikawa, Yoshiaki Hara and John A. West	
<i>Corynoplastis japonica gen. et sp. nov. and Dixonellales ord. nov. (Rhodellophyceae, Rhodophyta) based on morphological and molecular evidence</i>	278
Shigeki Mayama and Masahiko Idei	
<i>Fine structure of two Hygropetra species, Hygropetra gelasina sp. nov. and Hygropetra balfouriana (Bacillariophyceae), and the taxonomic position of the genus with special reference to Frankophila</i>	290
Kyosuke Niwa and Atsushi Kobiyama	
<i>Research Note: Simple molecular discrimination of cultivated Porphyra species (Porphyra yezoensis and Porphyra tenera) and related wild species (Bangiales, Rhodophyta)</i>	299
Maiko Tamura, Yoshihito Takano and Takeo Horiguchi	
<i>Discovery of a novel type of body scale in the marine dinoflagellate, Amphidinium cupulatisquama sp. nov. (Dinophyceae)</i>	304
M. Cecilia Gauna, Elisa R. Parodi and Eduardo J. Cáceres	
<i>Epiphytic relationships of Pseudendoclonium submarinum Wille (Ulvophyceae) and Rhodymenia pseudopalmata (Rhodophyta) from the Patagonian coast of Argentina</i>	313
Corrigendum	323
Referees	359
Author Index	360
Subject Index	361
