

Phycological
Research

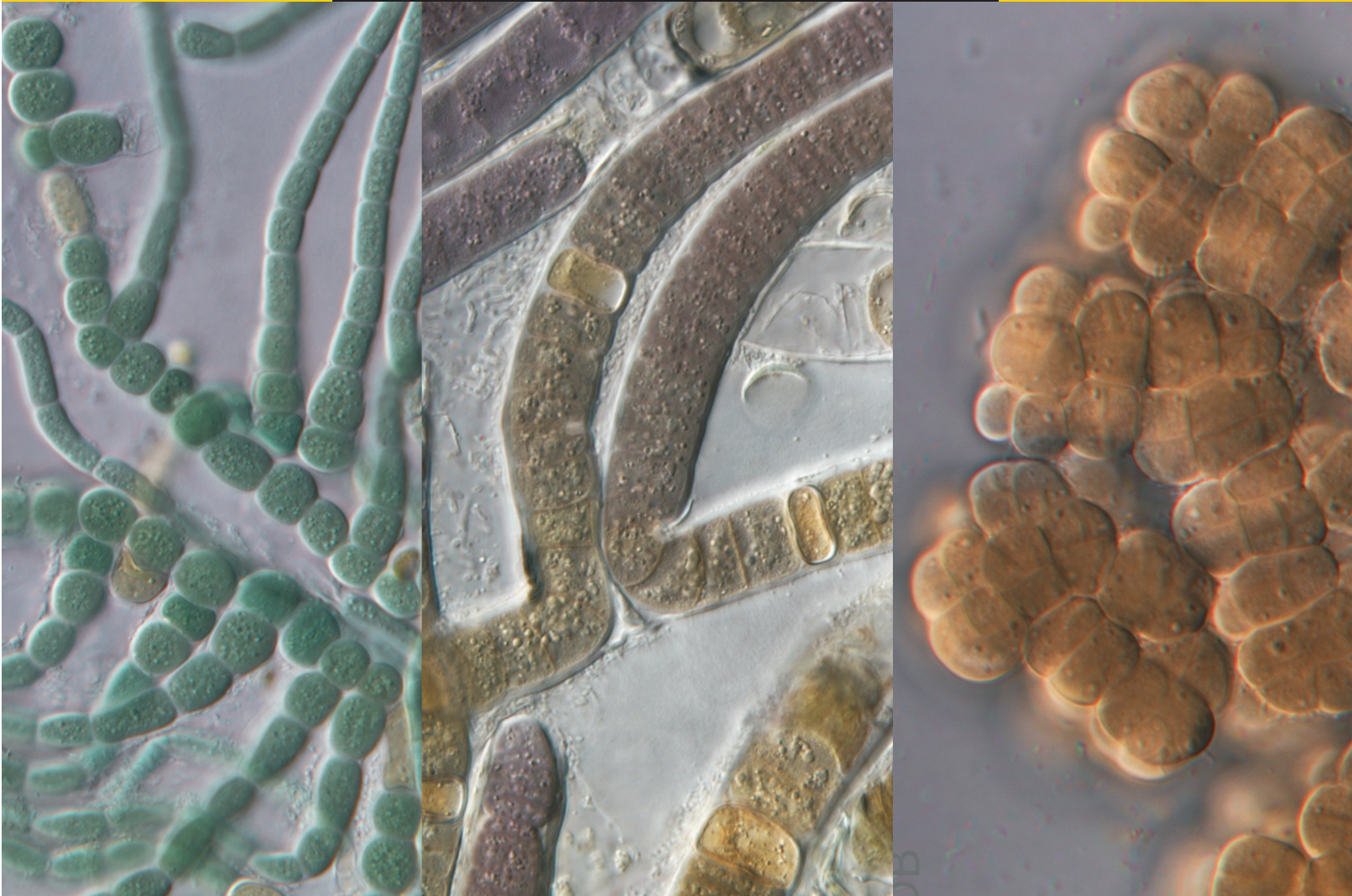
Volume 63 • Issue 2 • April 2015

Ichiro Mine, Satoko Sekida and Kazuo Okuda <i>Review: Cell wall and cell growth characteristics of giant-celled algae</i>	77
Alison R. Sherwood, Amy L. Carlile, Melissa A. Vaccarino and Jeffrey R. Johansen <i>Characterization of Hawaiian freshwater and terrestrial cyanobacteria reveals high diversity and numerous putative endemics</i>	85
Shuang Xia, Yingyin Cheng, Huan Zhu, Guoxiang Liu and Zhengyu Hu <i>Distribution and population dynamics of cryptomonads in a Chinese lake with three basins varying in their trophic state</i>	93
Brajogopal Samanta and Punyasloke Bhadury <i>Thalassiosira sundarbana sp. nov. (Bacillariophyta), an estuarine diatom from Sundarbans mangrove ecoregion based on morphology and molecular phylogeny</i>	102
Kenneth Neil Mertens, Yoshihito Takano, Haifeng Gu, Aika Yamaguchi, Vera Pospelova, Marianne Ellegaard and Kazumi Matsuoka <i>Cyst-theca relationship of a new dinoflagellate with a spiny round brown cyst, Protoperidinium lewisiae sp. nov., and its comparison to the cyst of Oblea acanthocysta</i>	110
Wittaya Tawong, Tomohiro Nishimura, Hiroshi Sakanari, Shinya Sato, Haruo Yamaguchi and Masao Adachi <i>Characterization of Gambierdiscus and Coolia (Dinophyceae) isolates from Thailand based on morphology and phylogeny</i>	125
Tingting Liu, Kenneth Neil Mertens, Sofia Ribeiro, Marianne Ellegaard, Kazumi Matsuoka and Haifeng Gu <i>Cyst-theca relationships and phylogenetic positions of Peridinales (Dinophyceae) with two anterior intercalary plates, with description of Archaeoperidinium bailongense sp. nov. and Protoperidinium fuzhouense sp. nov</i>	134
Christophe Vieira, Claude Payri and Olivier De Clerck <i>Research note: Overgrowth and killing of corals by the brown alga Lobophora hederacea (Dictyotales, Phaeophyceae) on healthy reefs in New Caledonia: A new case of the epizoisism syndrome</i>	152
Hiroshi Kawai, Takeaki Hanyuda, Thomas Mumford and J. Robert Waaland <i>Research note: An introduced population of Chorda asiatica (Chordaceae, Laminariales) in Puget Sound, Pacific coast of North America</i>	154

Phycological
Research

Volume 63 • Issue 2 • April 2015

ISSN 1322-0829



Phycological Research

Volume 63, Issue 2, April 2015, Pages 77-158

WILEY

WILEY

The Japanese
Society of
Phycology

Phycological Research

EDITOR-IN-CHIEF

Mitsunobu Kamiya

Faculty of Marine Bioscience, Fukui Prefectural University, Fukui, Japan

ASSOCIATE EDITORS

Jaanika Blomster
Dept. of Environmental
Sciences, University of
Helsinki, Finland

Niels Daugbjerg
Department of Biology,
University of
Copenhagen, Denmark

Daisuke Honda
Department of Biology,
Faculty of Science and
Engineering, Konan
University, Japan

Mitsunori Iwataki
Asian Natural
Environmental Science
Center, University of
Tokyo, Japan

Regine Jahn
Botanic Garden and
Botanical Museum
Berlin-Dahlem, Freie
Universität Berlin,
Germany

Ulf Karsten
Institute of Biological
Sciences, University of
Rostock, Germany

Christos Katsaros
Department of Botany,
Faculty of Biology,
University of Athens,
Greece

Masanobu Kawachi
Environmental Biology
Division, National
Institute for
Environmental Studies,
Japan

Jeong Ha Kim
Department of
Biological Sciences,
Sungkyunkwan
University, Korea

Tatyana A. Klochkova
Department of Biology,
Kongju National
University, Korea

Show-Mei Lin
Institute of Marine
Biology, National
Taiwan Ocean
University, Taiwan

Ichiro Mine
Graduate School of
Kuroshio Science,
Kochi University, Japan

Rei Narikawa
Department of Biological
Science, Shizuoka
University, Japan

Wendy Nelson
National Institute of
Water & Atmospheric
Research & SBS,
University of Auckland,
New Zealand

Gregory N. Nishihara
Institute of East China
Sea Research,
Nagasaki University,
Japan

Tatsufumi Okino
Faculty of Environmental
Earth Science,
Hokkaido University,
Japan

Hirofumi Sekimoto
Department of Chemical
and Biological Sciences,
Faculty of Science,
Japan Women's
University, Japan

Kensuke Toyoda
Department of Biology,
Keio University, Japan

John A. West
School of Botany,
University of
Melbourne, Australia

Giuseppe C. Zuccarello
School of Biological
Sciences, University of
Wellington, New
Zealand

EDITORIAL SECRETARY

Shinya Sato

Faculty of Marine Bioscience, Fukui Prefectural University, Fukui, Japan

This journal is available online at *Wiley Online Library*. Visit wileyonlinelibrary.com to search the articles and register for table of contents email alerts.

Access to this journal is available free online within institutions in the developing world through the AGORA initiative with the FAO and the OARE initiative with UNEP. For information, visit www.aginternetwork.org, www.oaresciences.org.

AIMS AND SCOPE *Phycological Research* is published by the Japanese Society of Phycology and complements the *Japanese Journal of Phycology*. The Journal publishes international, peer-reviewed research dealing with all aspects of phycology to facilitate the international exchange of results. All articles are peer-reviewed by at least two researchers expert in the field of the submitted paper. *Phycological Research* has been credited by the International Association for Plant Taxonomy for the purpose of registration of new non-vascular plant names (including fossils). For further information see <http://bgbm3.bgbm.fu-berlin.de/iapt/registration/journals/htm>.

ABSTRACTING AND INDEXING SERVICES The Journal is indexed by Aquatic Sciences & Fisheries Abstracts, BIOBASE, Biological Abstracts, BIOSIS Previews, Biotechnology & Bioengineering Abstracts, Cambridge Scientific Abstracts, Chemical Abstracts Service, Current Awareness in Biological Sciences, Current Contents, Ecological Abstracts, EMBASE/Excerpta Medica, Environmental Sciences and Pollution Management, GEOBASE, Irrigation and Drainage Abstracts, Microbiology Abstracts, Oceanic Abstracts, Pollution Abstracts, ProQuest (previously University Microfilms), Referativnyi Zhurnal, Science Citation Index (ISI), Soils and Fertilizers, Weed Abstracts, Zoological Record, National Inquiry Services Centre (NISC).

THE JAPANESE SOCIETY OF PHYCOLOGY We invite anyone who is interested in any aspect of phycology to become a member of the Society. As a member you will receive *Phycological Research* and the *Japanese Journal of Phycology* free of charge. The annual membership fee for individuals ¥8000. Members who reside outside Japan will receive only the English language journal *Phycological Research* and the annual membership fee is ¥7000 (standard), ¥5000 (student).

Those who wish to join the Society should send the application form (at the back of each issue of the Journal), together with payment, to the Membership Secretary, at the address given on the form. Members who wish to claim for missing or damaged issues should contact the Membership Secretary.

ADDRESS FOR EDITORIAL CORRESPONDENCE Mitsunobu Kamiya, Faculty of Marine Bioscience, Fukui Prefectural University, 1-1 Gakuencho, Obama, Fukui 917-0003, Japan (E-mail: mkamiya@fpu.ac.jp).

DISCLAIMER The Publisher, Japanese Society of Phycology and Editors cannot be held responsible for errors or any consequences arising from the use of information contained in this journal; the views and opinions expressed do not necessarily reflect those of the Publisher, Japanese Society of Phycology and Editors, neither does the publication of advertisements constitute any endorsement by the Publisher, Japanese Society of Phycology and Editors of the products advertised.

Copyright © 2015 Japanese Society of Phycology.

Cover Examples of Hawaiian cyanobacterial diversity. Left: "*Fisherella*" sp. (will be described as a new genus), a collection from a cave wall on the island of Kauai (Photo by M. Vaccarino). Middle: *Brasilonema octagenarum*, collected from a mossy bank along a hiking trail on the island of Oahu (Photo by M. Vaccarino). Right: *Pleurocapsa* sp., from a stream on the island of Oahu. See Sherwood *et al.* in this issue for details.

Note to NIH Grantees

Pursuant to NIH mandate, Wiley Blackwell will post the accepted version of contributions authored by NIH grant-holders to PubMed Central upon acceptance. This accepted version will be made publicly available 12 months after publication. For further information, see www.wiley.com/go/nihmandate.

For submission instructions, subscription and all other information visit <http://wileyonlinelibrary.com/journal/pre>

ISSN 1322-0829 (Print) ISSN 1440-1835 (Online)

PRE.JEB.Apr15

The Japanese Society of Phycology

Officers for 2015–2016

President: Jiro Tanaka *Tokyo University of Marine
Science and Technology, Japan*
Secretary: Hidekazu Suzuki *Tokyo University of Marine
Science and Technology, Japan*
Treasurer: Takanori Matsuoka *Nippon Dental University,
Tokyo, Japan*

Membership Secretary: Satoko Sekida *Kochi University,
Japan*; Shin-ichiro Abe *Ibaraki University, Japan*
Public Relations Secretary: Takashi Nakada
Keio University, Japan
Secretary for International Affairs: Shin-ichiro Abe
Ibaraki University, Japan

Members of Executive Council 2015–2016

Sung Min Boo *Chungnam National University, Korea*
Daisuke Fujita *Tokyo University of Marine Science
and Technology, Japan*
Masahiko Idei *Bunkyo University, Japan*
Masanobu Kawachi *National Institute for
Environmental Studies, Japan*
Shigeo Kawaguchi *Kyushu University, Japan*
Hiroshi Kawai *Kobe University, Japan*
Akira Kurashima *Mie University, Japan*
Ichiro Mine *Kochi University, Japan*
Shinichi Miyamura *University of Tsukuba, Japan*
Hideaki Miyashita *Kyoto University, Japan*
Taizo Motomura *Hokkaido University, Japan*

Daisuke Muraoka *Tohoku National Fisheries
Research Institute, Japan*
Tamotsu Nagumo *The Nippon Dental University,
Japan*
Takeshi Nakayama *University of Tsukuba, Japan*
Wendy A. Nelson *The National Institute of Water
and Atmospheric Research, New Zealand*
Shuji Ohtani *Shimane University, Japan*
Yoshihiko Sakanishi *Japan Sea National Fisheries
Research Institute, Japan*
Ryuta Terada *Kagoshima University, Japan*
Giuseppe C. Zuccarello *Victoria University of
Wellington, New Zealand*

JOIN THE JAPANESE SOCIETY OF PHYCOLOGY AND RECEIVE FOUR ISSUES OF PHYCOLOGICAL RESEARCH PER YEAR FREE OF CHARGE

The Japanese Society of Phycology, founded in 1952, currently has 685 members (including 68 overseas members).
The Society is open to anyone who is interested in pure or applied aspects of phycology.

Application for membership

(Please type or write in block letters) Membership starts from 2014

Name in full: _____,
(Family name) (Given name and initials)

Mailing address: _____

(Postal code) (Country)

Telephone: _____ Fax: _____

E-mail: _____ Interests: _____

Signature: _____ Date: _____

The annual fee for individual members is ¥8000
(¥7000 for members who reside outside Japan, ¥5000 for students who submit a verifying
statement signed by their Chairperson or Head of Department)

Payment by: ☐ Visa ☐ MasterCard ☐ American Express

Card number: _____ - _____ - _____ - _____ Expiry date: _____

Signature: _____

☐ International postal money order

Send application form to: Shin-ichiro ABE
College of Education,
Ibaraki University,
2-1-1, Bunkyo, Mito,
Ibaraki 310-8512, Japan
PHONE & FAX: +81-29-228-8446
Email: shinabe@mx.ibaraki.ac.jp