

## Mitsuo Kajimura: Lectotypification of *Scinaia moniliformis* J. Agardh (Galaxauraceae, Rhodophyta)<sup>1</sup>

*Key Index Words:* Galaxauraceae—lectotypification—Rhodophyta—*Scinaia moniliformis*.

Mitsuo Kajimura, Marine Biological Station, Shimane University, Kamo, Saigo, Oki-gun, 685 Japan

In 1885 J. Agardh described *Scinaia moniliformis* from the two specimens (“Hab. ad Port Phillip Novae Hollandiae australis: I. Br. Wilson!”) which were collected by John Bracewood Wilson from Port Phillip Heads, Victoria, Australia. No holotype specimen, however, was indicated by J. Agardh for *Scinaia moniliformis*.

These two original material specimens were each mounted on a small herbarium sheet and these two small sheets were mounted on a herbarium sheet (Fig. 1a, b). One had a reddish label of “Typus!” (Fig. 1a) which was added later by a staff of LD routinely (personal communication with Dr. Per Lassen). This specimen (LD Herb. Agardh No. 32207) was collected on February 28, 1882.

After careful examination of these two specimens the present writer has found that the one specimen (LD Herb. Agardh No. 32207) is a mature male plant with spermatangial sori which are distinguishably yellow in the present dried condition, excluding utricles and formed restrictedly to approximately upper half of the terminal or subterminal segments (Fig. 3). The spermatangial sori in this species are considered to be the ‘modified apical cap-type’ as seen in *Scinaia pseudo-moniliformis* Kajimura (1991), but the other specimen (LD Herb. Agardh No. 32208) is sterile.

Consequently the present writer has chosen the male mature specimen (LD Herb. Agardh No. 32207) from these two specimens as the lectotype (Fig. 2) for *Scinaia moniliformis* according to the Article 7.4 of the Interna-

tional Code of Botanical Nomenclature (Greuter *et al.* 1988) this time.

*Scinaia moniliformis* J. Agardh, Lunds Univ. Årsskr. 21: 72, 1885.

Lectotype: LD Herb. Agardh No. 32207, Feb. 28, 1882, Port Phillip Heads, Victoria, Australia, Botanical Museum, Lunds University.

### Acknowledgments

The present writer wishes to thank Dr. Per Lassen of the Botanical Museum, Lunds University (LD) for his helpful suggestions as well as the loan of the original material specimens of *Scinaia moniliformis*. He also wishes to acknowledge his indebtedness to Drs. Dan H. Nicolson and James N. Norris of Smithsonian Institution, Washington D.C. for their helpful suggestions and critical reading of the manuscript.

### References

- Agardh, J. G. 1885. Till Algernes Systematik, Nya Bidrag, part 4, No. 7: Florideae. *Lunds Univ. Årsskr.* 21: 1–120.
- Kajimura, M. 1991. *Scinaia pseudo-moniliformis* sp. nov. (Galaxauraceae, Rhodophyta) from the Sea of Japan. *Bot. Mar.* 34: 513–520.
- Greuter, W., Burdet, H. M., Chaloner, W. G., Demoulin, V., Grolle, R., Hawks-Worth, D. L., Nicolson, D. H., Silva, P. C., Stafleu, F. A., Voss, E. G. and McNeill, J. (Eds.) 1988. International Code of Botanical Nomenclature, adopted by the 14th International Botanical Congress, Berlin, July–August 1987. *Regnum Veg.* 118: xiv + 328 pp. Koeltz Scientific Books, Königstein.

<sup>1</sup> Contribution No. 53 from Oki Marine Biological Station, Shimane University.

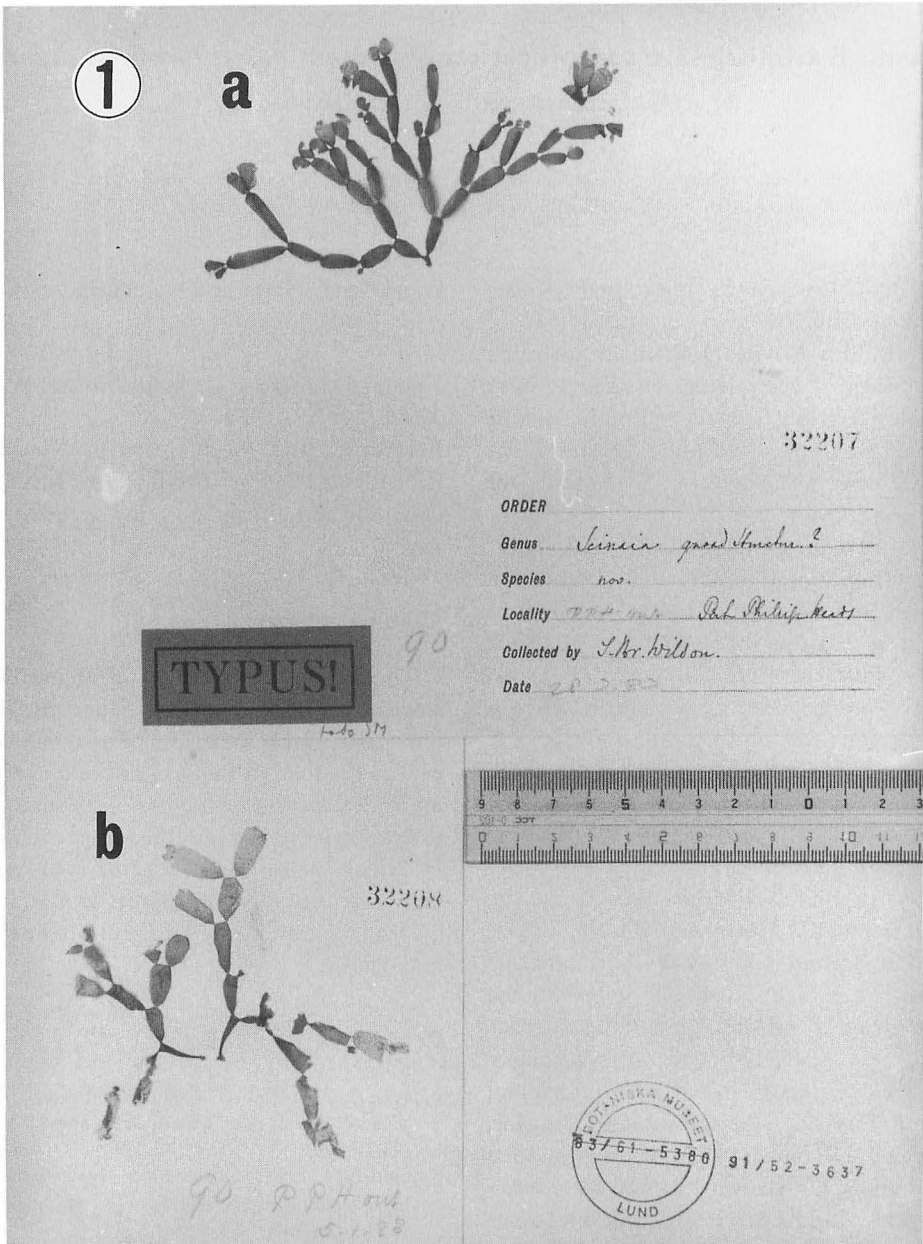


Fig. 1. *Scinia moniliformis* J. Agardh.  
 Two original material specimens (a: LD Herb. Agardh No. 32207, male; b: LD Herb. Agardh No. 32208, sterile).

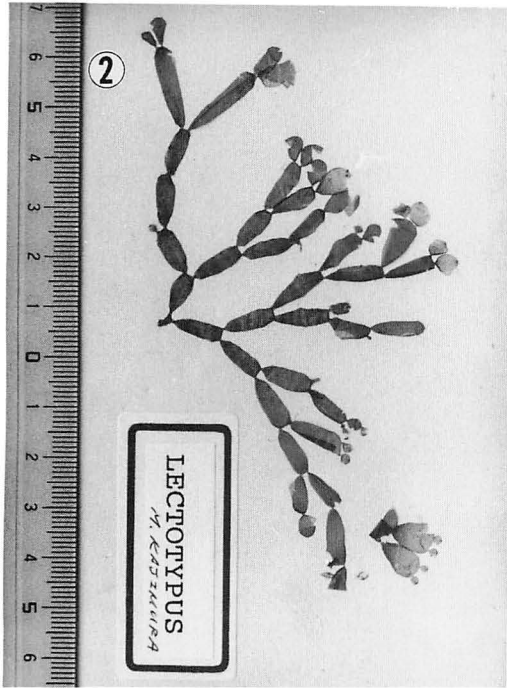


Fig. 2. *Scinaia moniliformis* J. Agardh. Male lectotype specimen (LD Herb. Agardh No. 32207).

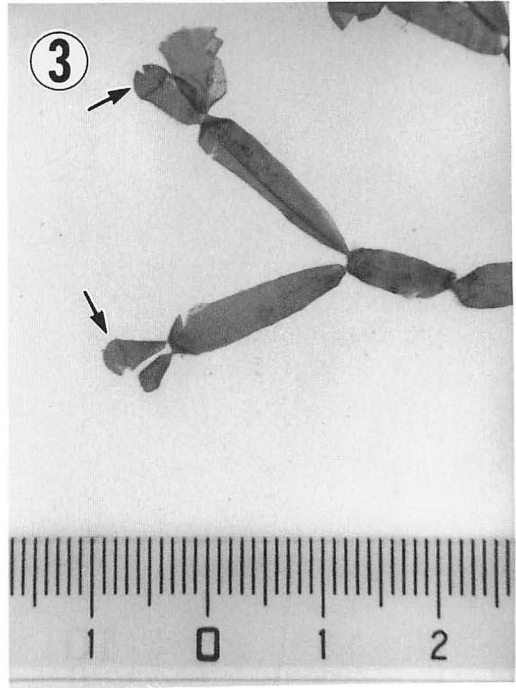


Fig. 3. *Scinaia moniliformis* J. Agardh. Part of the male lectotype specimen showing two spermatangial sori of the 'modified apical cap-type' by arrows.

梶村光男：ジュズフサノリ（紅藻植物門，ガラガラ科）の選定基準標本の選定

紅藻植物門，ガラガラ科ジュズフサノリの選定基準標本を国際植物命名規約第7.4条に従って，上記2原資料標本から選定した。（685 島根県隠岐郡西郷町大字加茂194 島根大学理学部附属臨海実験所）

